

Allgemeine Informationen

Katalog-Nr.: 16926-1-AP	GenBank-Zugangsnummer: BC080599	Reinigungsmethode: Antigen-Affinitätsreinigung
Größe: 150ul , Konzentration: 500 µg/ml von Nanodrop und 260 µg/ml durch die Bradford-Methode mit BSA als Standard;	GeneID (NCBI): 828	Empfohlene Verdünnungen: WB 1:1000-1:8000 IHC 1:50-1:500
Wirt: Kaninchen	Vollständiger Name: calcyphosine	
Isotyp: IgG	Berechnete Masse: 189 aa, 21 kDa	
Immunogen Katalognummer: AG10330	Beobachtete Masse: 21 kDa	

Anwendungen

Geprüfte Anwendungen: IHC, WB, ELISA	Positivkontrollen:
Getestete Reaktivität: Human	WB : humanes Plazenta-Gewebe, humanes Kolongewebe, humanes Milzgewebe
Hinweis-IHC: Antigenmaskierung mit TE- Puffer pH 9,0 empfohlen. (*) Wahlweise kann die Antigenmaskierung auch mit Citratpuffer pH 6,0 erfolgen.	IHC : humanes Ösophaguskarzinomgewebe,

Hintergrundinformationen

calcyphosine is a calcium-binding protein, which may play a role in the regulation of ion transport. Calcyphosine (CAPS) was initially identified in the canine thyroid but has also been detected in humans and other mammals. CAPS synthesis is increased by thyroid-stimulating hormone and cAMP analogs that promote cell proliferation and maintain cell differentiation. Recently, CAPS was found to be involved in many kinds of tumor.

Lagerung

Lagerungsbedingungen:
Bei -20°C lagern. Nach dem Versand ein Jahr lang stabil
Lagerungspuffer:
PBS mit 0.02% Natriumazid und 50% Glycerin pH 7.3.
Aliquotieren ist nicht notwendig bei -20°C Lagerung

*** 20ul-Größen enthalten 0.1% BSA

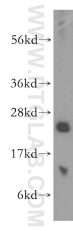
For technical support and original validation data for this product please contact:

T: 1 (888) 4PTGLAB (1-888-478-4522) (toll free
in USA), or 1(312) 455-8498 (outside USA)

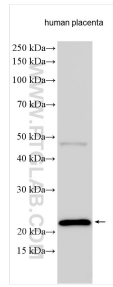
E: proteintech@ptglab.com
W: ptglab.com

This product is exclusively available under Proteintech Group brand and is not available to purchase from any other manufacturer.

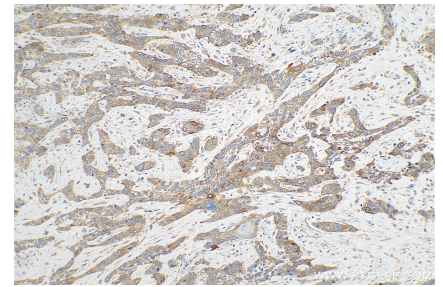
Ausgewählte Validierungsdaten



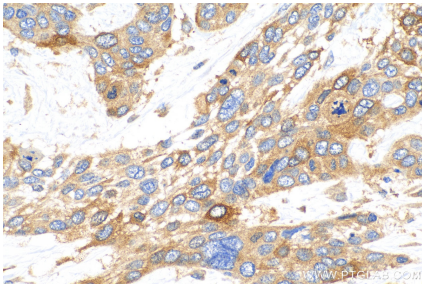
human spleen tissue were subjected to SDS PAGE followed by western blot with 16926-1-AP (Calcyphosine antibody) at dilution of 1:500 incubated at room temperature for 1.5 hours.



Human placenta tissue were subjected to SDS PAGE followed by western blot with 16926-1-AP (Calcyphosine antibody) at dilution of 1:4000 incubated at room temperature for 1.5 hours.



Immunohistochemical analysis of paraffin-embedded human placenta tissue slide using 16926-1-AP (Calcyphosine antibody) at dilution of 1:200 (under 10x lens). Heat mediated antigen retrieval with Tris-EDTA buffer (pH 9.0).



Immunohistochemical analysis of paraffin-embedded human oesophagus cancer tissue slide using 16926-1-AP (Calcyphosine antibody) at dilution of 1:200 (under 40x lens). Heat mediated antigen retrieval with Tris-EDTA buffer (pH 9.0).