

Nur für Forschungszwecke

MEF2C Polyklonaler Antikörper

Katalog-Nr.:16953-1-AP



Allgemeine Informationen

Katalog-Nr.:
16953-1-AP

Größe:
150ul , Konzentration: 133 µg/ml von
Nanodrop und 133 µg/ml durch die
Bradford-Methode mit BSA als
Standard;

Wirt:
Kaninchen

Isotyp:
IgG

Immunogen Katalognummer:
AG10583

GenBank-Zugangsnummer:
BC026341

GeneID (NCBI):
4208

Vollständiger Name:
myocyte enhancer factor 2C

Berechnete Masse:
469 aa, 51 kDa

Beobachtete Masse:
63 kDa

Reinigungsmethode:

Antigen-Affinitätsreinigung

Empfohlene Verdünnungen:

WB 1:500-1:2000

Anwendungen

Geprüfte Anwendungen:

WB, ELISA

Getestete Reaktivität:

Human, Maus, Ratte

Positivkontrollen:

WB : humanes Herzgewebe, HeLa-Zellen, Maus-
Skelettmuskelgewebe, TF-1-Zellen

Hintergrundinformationen

MEF2C belongs to the MEF2 family. It is a transcription activator which binds specifically to the MEF2 element present in the regulatory regions of many muscle-specific genes. MEF2C controls cardiac morphogenesis and myogenesis, and is also involved in vascular development. It plays an essential role in hippocampal-dependent learning and memory by suppressing the number of excitatory synapses and thus regulating basal and evoked synaptic transmission. It is crucial for normal neuronal development, distribution, and electrical activity in the neocortex and is necessary for proper development of megakaryocytes and platelets and for bone marrow B lymphopoiesis. This protein is required for B-cell survival and proliferation in response to BCR stimulation, efficient IgG1 antibody responses to T-cell-dependent antigens and for normal induction of germinal center B cells. It may also be involved in neurogenesis and in the development of cortical architecture. This antibody is a rabbit polyclonal antibody raised against an internal region of human MEF2C.

Lagerung

Lagerungsbedingungen:

Bei -20°C lagern. Nach dem Versand ein Jahr lang stabil

Lagerungspuffer:

PBS mit 0.02% Natriumazid und 50% Glycerin pH 7.3.

Aliquotieren ist nicht notwendig bei -20°C Lagerung

*** 20ul-Größen enthalten 0.1% BSA

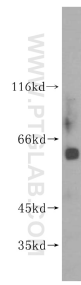
For technical support and original validation data for this product please contact:

T: 1 (888) 4PTGLAB (1-888-478-4522) (toll free
in USA), or 1(312) 455-8498 (outside USA)

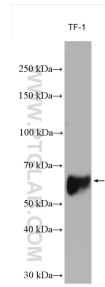
E: proteintech@ptglab.com
W: ptglab.com

This product is exclusively available under Proteintech Group brand and is not available to purchase from any other manufacturer.

Ausgewählte Validierungsdaten



human heart tissue were subjected to SDS PAGE followed by western blot with 16953-1-AP (MEF2C antibody) at dilution of 1:400 incubated at room temperature for 1.5 hours.



TF-1 cells were subjected to SDS PAGE followed by western blot with 16953-1-AP (MEF2C antibody) at dilution of 1:600 incubated at room temperature for 1.5 hours.