

Nur für Forschungszwecke

MTERF Polyklonaler Antikörper

Katalog-Nr.:16957-1-AP

2 Publikationen



Allgemeine Informationen

Katalog-Nr.:
16957-1-AP

Größe:
150ul, Konzentration: 500 µg/ml von
Nanodrop und 287 µg/ml durch die
Bradford-Methode mit BSA als
Standard;

Wirt:
Kaninchen

Isotyp:
IgG

Immunogen Katalognummer:
AG10640

GenBank-Zugangsnummer:
BC000965

GeneID (NCBI):
7978

Vollständiger Name:
mitochondrial transcription
termination factor

Berechnete Masse:
46 kDa

Beobachtete Masse:
31 kDa

Reinigungsmethode:

Antigen-Affinitätsreinigung

Empfohlene Verdünnungen:

WB 1:500-1:2000

Anwendungen

Geprüfte Anwendungen:

WB, ELISA

In Publikationen genannte Anwendungen:

WB

Getestete Reaktivität:

Human, Maus, Ratte

Zitierte Arten:

Human, Maus

Positivkontrollen:

WB: HeLa-Zellen, Jurkat-Zellen

Hintergrundinformationen

Mitochondrial transcription termination factor (MTERF) also named as Mterf1 is a 399 amino acid protein, which localizes in the mitochondrion and belongs to the mTERF family. MTERF contains three leucine zippers that form a three-stranded coiled-coil that binds to DNA. It has been suggested that only the phosphorylated form of MTERF has transcription termination activity. MTERF plays a central role in the control of mitochondrial rRNA and mRNA synthesis. MTERFD1 is also thought to act as a mitochondrial transcription regulator and is expressed as two isoforms produced by alternative splicing. Using DNA affinity chromatography, a fraction called MTERF was found to be associated with foot-printing capacity, and this contained two polypeptides of 34 and 31 kDa. Moreover, termination-promoting activity appears to reside in the 34-kDa protein. (PMID:7681833).

Bemerkenswerte Veröffentlichungen

Verfasser	Pubmed ID	Journal	Anwendung
Stanka Matic	29572490	Nat Commun	WB
Jing Geng	26414765	Nat Immunol	WB

Lagerung

Lagerungsbedingungen:

Bei -20°C lagern. Nach dem Versand ein Jahr lang stabil

Lagerungspuffer:

PBS mit 0.02% Natriumazid und 50% Glycerin pH 7.3.

Aliquotieren ist nicht notwendig bei -20°C Lagerung

*** 20ul-Größen enthalten 0.1% BSA

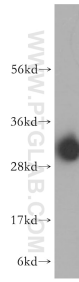
For technical support and original validation data for this product please contact:

T: 1 (888) 4PTGLAB (1-888-478-4522) (toll free
in USA), or 1(312) 455-8498 (outside USA)

E: proteintech@ptglab.com
W: ptglab.com

This product is exclusively available under Proteintech Group brand and is not available to purchase from any other manufacturer.

Ausgewählte Validierungsdaten



HeLa cells were subjected to SDS PAGE followed by western blot with 16957-1-AP (MTERF antibody) at dilution of 1:400 incubated at room temperature for 1.5 hours.