

Nur für Forschungszwecke

# Connexin-26 Polyklonaler Antikörper



Katalog-Nr.:16960-1-AP

2 Publikationen

## Allgemeine Informationen

<b>Katalog-Nr.:</b> 16960-1-AP	<b>GenBank-Zugangsnummer:</b> BC017048	<b>Reinigungsmethode:</b> Antigen-Affinitätsreinigung
<b>Größe:</b> 150ul , Konzentration: 260 µg/ml von Nanodrop und 147 µg/ml durch die Bradford-Methode mit BSA als Standard;	<b>GeneID (NCBI):</b> 2706	<b>Empfohlene Verdünnungen:</b> WB 1:500-1:1000 IF 1:50-1:500
<b>Wirt:</b> Kaninchen	<b>Vollständiger Name:</b> gap junction protein, beta 2, 26kDa	
<b>Isotyp:</b> IgG	<b>Berechnete Masse:</b> 26 kDa	
<b>Immunogen Katalognummer:</b> AG10666	<b>Beobachtete Masse:</b> 26 kDa	

## Anwendungen

<b>Geprüfte Anwendungen:</b> IF, WB,ELISA	<b>Positivkontrollen:</b> WB : PC-3-Zellen, humanes Lebergewebe IF : PC-3-Zellen,
<b>In Publikationen genannte Anwendungen:</b> WB	
<b>Getestete Reaktivität:</b> Human, Maus, Ratte	
<b>Zitierte Arten:</b> Human	

## Hintergrundinformationen

The gap junctions were first characterized by electron microscopy as regionally specialized structures on plasma membranes of contacting adherent cells. These structures were shown to consist of cell-to-cell channels that facilitate the transfer of ions and small molecules between cells. The gap junction proteins, also known as connexins, purified from fractions of enriched gap junctions from different tissues differ. According to sequence similarities at the nucleotide and amino acid levels, the gap junction proteins are divided into two categories, alpha and beta. Connexin-26 (GJB2) is a beta class gap junction protein. Mutations in the gene for connexin-26 are responsible for as much as 50% of pre-lingual, recessive deafness.

## Bemerkenswerte Veröffentlichungen

Verfasser	Pubmed ID	Journal	Anwendung
Bo Ling	32471520	Oncol Res	WB
Zhiyang Zhu	31059036	Mol Med Rep	

## Lagerung

**Lagerungsbedingungen:**  
Bei -20°C lagern. Nach dem Versand ein Jahr lang stabil  
**Lagerungspuffer:**  
PBS mit 0.02% Natriumazid und 50% Glycerin pH 7.3.  
Aliquotieren ist nicht notwendig bei -20°C Lagerung

\*\*\* 20ul-Größen enthalten 0.1% BSA

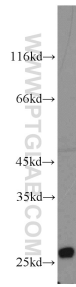
For technical support and original validation data for this product please contact:

T: 1 (888) 4PTGLAB (1-888-478-4522) (toll free in USA), or 1(312) 455-8498 (outside USA)

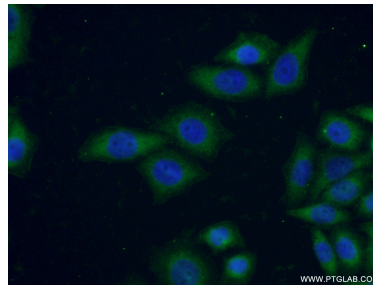
E: proteintech@ptglab.com  
W: ptglab.com

This product is exclusively available under Proteintech Group brand and is not available to purchase from any other manufacturer.

## Ausgewählte Validierungsdaten



PC-3 cells were subjected to SDS PAGE followed by western blot with 16960-1-AP (Connexin-26 antibody) at dilution of 1:500 incubated at room temperature for 1.5 hours.



Immunofluorescent analysis of (-20°C Ethanol) fixed PC-3 cells using 16960-1-AP (Connexin-26 antibody) at dilution of 1:50 and Alexa Fluor 488-conjugated AffiniPure Goat Anti-Rabbit IgG(H+L).