

Nur für Forschungszwecke

CD14 Polyklonaler Antikörper

Katalog-Nr.: 17000-1-AP

46 Publikationen



Allgemeine Informationen

Katalog-Nr.: 17000-1-AP	GenBank-Zugangsnummer: BC010507	Reinigungsmethode: Antigen-Affinitätsreinigung
Größe: 150ul, Konzentration: 350 µg/ml von Nanodrop;	GeneID (NCBI): 929	Empfohlene Verdünnungen: WB 1:500-1:1000 IHC 1:1000-1:4000 IF 1:50-1:500
Wirt: Kaninchen	Vollständiger Name: CD14 molecule	
Isotyp: IgG	Berechnete Masse: 375 aa, 40 kDa	
Immunogen Katalognummer: AG10693	Beobachtete Masse: 50-55 kDa	

Anwendungen

Geprüfte Anwendungen:

FC, IF, IHC, WB, ELISA

In Publikationen genannte Anwendungen:

FC, IF, IHC, WB

Getestete Reaktivität:

Human, Maus

Zitierte Arten:

Hausschwein, Human, Maus, Ratte

Hinweis-IHC: Antigenmaskierung mit TE-Puffer pH 9,0 empfohlen. (*) Wahlweise kann die Antigenmaskierung auch mit Citratpuffer pH 6,0 erfolgen.

Positivkontrollen:

WB : HL-60-Zellen, humanes Milzgewebe, RAW 264.7-Zellen

IHC : humanes Leberzirrhosegewebe, humanes Appendizitis-Gewebe, humanes Tonsillitisgewebe

IF : RAW 264.7-Zellen,

Hintergrundinformationen

CD14 is a 50-55 kDa glycosylphosphatidylinositol-anchored glycoprotein preferentially expressed on monocytes and macrophages, and at lower levels on granulocytes (PMID: 3385210; 2462937; 7685797). CD14 can also exist as a soluble protein. CD14 acts as a co-receptor for bacterial liposaccharides (LPS) (PMID: 1698311). It plays a major role in the inflammatory response of monocytes to LPS.

Bemerkenswerte Veröffentlichungen

Verfasser	Pubmed ID	Journal	Anwendung
Su Jin Kim	32875703	EMBO Rep	IF
Xuxin Chen	30362554	J Cell Physiol	FC
Hon-Kan Yip	33162819	Int J Biol Sci	IF

Lagerung

Lagerungsbedingungen:

Bei -20°C lagern. Nach dem Versand ein Jahr lang stabil

Lagerungspuffer:

PBS mit 0.02% Natriumazid und 50% Glycerin pH 7.3.

Aliquotieren ist nicht notwendig bei -20°C Lagerung

*** 20ul-Größen enthalten 0.1% BSA

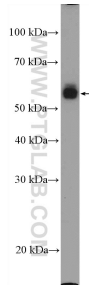
For technical support and original validation data for this product please contact:

T: 1 (888) 4PTGLAB (1-888-478-4522) (toll free in USA), or 1(312) 455-8498 (outside USA)

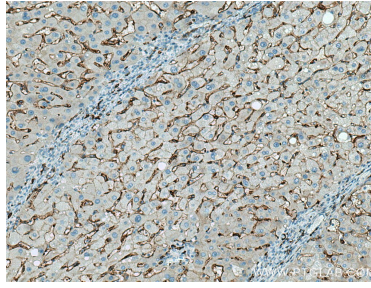
E: proteintech@ptglab.com
W: ptglab.com

This product is exclusively available under Proteintech Group brand and is not available to purchase from any other manufacturer.

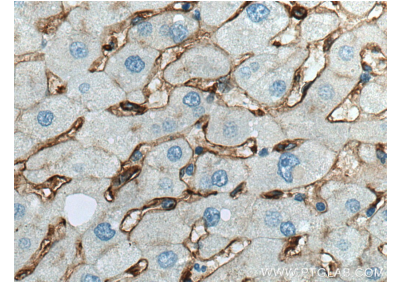
Ausgewählte Validierungsdaten



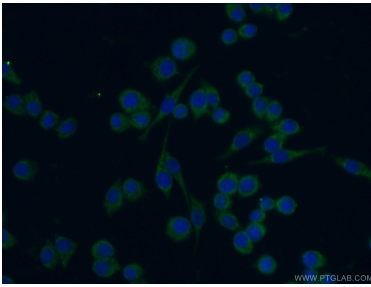
HL-60 cells were subjected to SDS PAGE followed by western blot with 17000-1-AP (CD14 Antibody) at dilution of 1:600 incubated at room temperature for 1.5 hours.



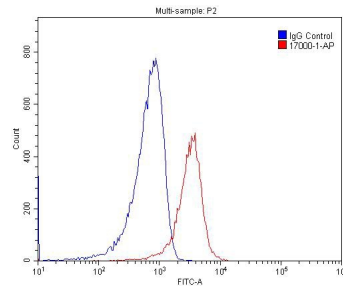
Immunohistochemical analysis of paraffin-embedded human hepatocirrhosis tissue slide using 17000-1-AP (CD14 antibody) at dilution of 1:2000 (under 10x lens). Heat mediated antigen retrieval with Tris-EDTA buffer (pH 9.0).



Immunohistochemical analysis of paraffin-embedded human hepatocirrhosis tissue slide using 17000-1-AP (CD14 antibody) at dilution of 1:2000 (under 40x lens). Heat mediated antigen retrieval with Tris-EDTA buffer (pH 9.0).



Immunofluorescent analysis of (-20°C Ethanol) fixed RAW 264.7 cells using 17000-1-AP (CD14 antibody) at dilution of 1:50 and Alexa Fluor 488-conjugated AffiniPure Goat Anti-Rabbit IgG(H+L).



1x10⁶ RAW 264.7 cells were stained with 0.2ug CD14 antibody (17000-1-AP, red) and control antibody (blue). Fixed with 4% PFA blocked with 3% BSA (30 min). Alexa Fluor 488-conjugated AffiniPure Goat Anti-Rabbit IgG(H+L) with dilution 1:1500.