

Nur für Forschungszwecke

# METAP2 Polyklonaler Antikörper

Katalog-Nr.:17040-1-AP

1 Publikationen



## Allgemeine Informationen

Katalog-Nr.:  
17040-1-AP

Größe:  
150ul, Konzentration: 700 µg/ml von  
Nanodrop und 320 µg/ml durch die  
Bradford-Methode mit BSA als  
Standard;

Wirt:  
Kaninchen

Isotyp:  
IgG

Immunogen Katalognummer:  
AG10564

GenBank-Zugangsnummer:  
BC013782

GeneID (NCBI):  
10988

Vollständiger Name:  
methionyl aminopeptidase 2

Berechnete Masse:  
478 aa, 53 kDa

Beobachtete Masse:  
67 kDa

Reinigungsmethode:

Antigen-Affinitätsreinigung

Empfohlene Verdünnungen:

WB 1:500-1:1000  
IP 0.5-4.0 µg für IP und 1:200-1:1000  
für WB

IF 1:50-1:500

## Anwendungen

Geprüfte Anwendungen:

IF, IP, WB, ELISA

In Publikationen genannte Anwendungen:

WB

Getestete Reaktivität:

Human, Maus, Ratte

Zitierte Arten:

Maus

Positivkontrollen:

WB : HepG2-Zellen, Mausdengewebe, Maus-  
Pankreasgewebe, MCF-7-Zellen

IP : MCF-7-Zellen,

IF : HepG2-Zellen,

## Hintergrundinformationen

MetAP2, also known as MAP2, P67EIF2 or p67, is one of the three known methionine aminopeptidases responsible for the removal of the N-terminal translation initiator methionine from newly synthesized proteins, which is a critical step in protein maturation (PMID: 27692546, 16568094). The enzyme binds two cobalt or manganese ions in its active site (PMID: 11524009, 12718546). As higher MetAP2 expression was observed in tumor (mesothelioma, neuroblastoma, and colorectal carcinoma) cells compared with normal cells, the enzyme serves as a target for anti-angiogenic compounds of natural origin, such as fumagillin and ovalicin (PMID: 11485930, 15927358, 15102683, 9224570). Selective inhibition of MetAP2 stops vascularization and tumor growth in animal models (PMID: 12118091). MetAP2 has 3 isoforms with molecular mass of 50-53 kDa and apparent molecular mass 67 kD.

## Bemerkenswerte Veröffentlichungen

Verfasser	Pubmed ID	Journal	Anwendung
Kotaro Fujii	30576652	Mol Cell	WB

## Lagerung

Lagerungsbedingungen:

Bei -20°C lagern. Nach dem Versand ein Jahr lang stabil

Lagerungspuffer:

PBS mit 0.02% Natriumazid und 50% Glycerin pH 7.3.

Aliquotieren ist nicht notwendig bei -20°C Lagerung

\*\*\* 20ul-Größen enthalten 0.1% BSA

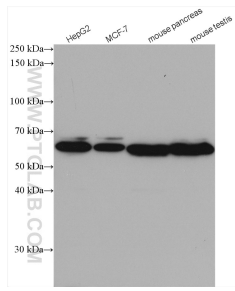
For technical support and original validation data for this product please contact:

T: 1 (888) 4PTGLAB (1-888-478-4522) (toll free  
in USA), or 1(312) 455-8498 (outside USA)

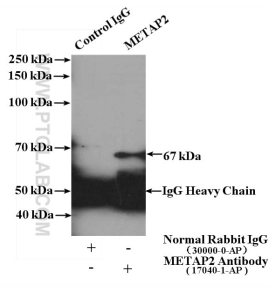
E: proteintech@ptglab.com  
W: ptglab.com

This product is exclusively available under Proteintech Group brand and is not available to purchase from any other manufacturer.

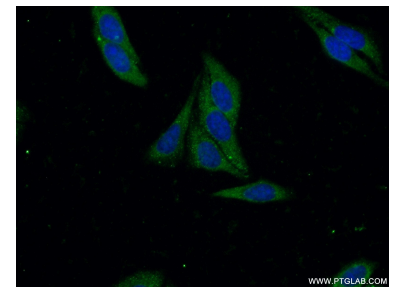
## Ausgewählte Validierungsdaten



Various lysates were subjected to SDS PAGE followed by western blot with 17040-1-AP (METAP2 antibody) at dilution of 1:500 incubated at room temperature for 1.5 hours.



IP Result of anti-METAP2 (IP:17040-1-AP, 4 $\mu$ g; Detection:17040-1-AP 1:300) with MCF-7 cells lysate 3200 $\mu$ g.



Immunofluorescent analysis of (-20°C Ethanol) fixed HepG2 cells using 17040-1-AP (METAP2 antibody) at dilution of 1:50 and Alexa Fluor 488-conjugated AffiniPure Goat Anti-Rabbit IgG(H+L).