

Nur für Forschungszwecke

LATS1 Polyklonaler Antikörper

Katalog-Nr.:17049-1-AP

Vorgestelltes Produkt

35 Publikationen



Allgemeine Informationen

Katalog-Nr.: 17049-1-AP	GenBank-Zugangsnummer: BC015665	Reinigungsmethode: Antigen-Affinitätsreinigung
Größe: 150ul , Konzentration: 650 µg/ml von Nanodrop und 333 µg/ml durch die Bradford-Methode mit BSA als Standard;	GeneID (NCBI): 9113	Empfohlene Verdünnungen: WB 1:500-1:2000 IHC 1:50-1:500
Wirt: Kaninchen	Vollständiger Name: LATS, large tumor suppressor, homolog 1 (Drosophila)	
Isotyp: IgG	Berechnete Masse: 15 kDa, 127 kDa	
Immunogen Katalognummer: AG10709	Beobachtete Masse: 140-150 kDa, 120 kDa	

Anwendungen

Geprüfte Anwendungen: IHC, WB, ELISA	Positivkontrollen: WB : HepG2-Zellen, A549-Zellen, C2C12-Zellen, HT-29-Zellen, K-562-Zellen, SH-SY5Y-Zellen
In Publikationen genannte Anwendungen: IF, IHC, WB	IHC : humanes Mammakarzinomgewebe, humanes Hodengewebe
Getestete Reaktivität: Human	
Zitierte Arten: Human	

Hinweis-IHC: Antigenmaskierung mit TE-Puffer pH 9,0 empfohlen. (*) Wahlweise kann die Antigenmaskierung auch mit Citratpuffer pH 6,0 erfolgen.

Hintergrundinformationen

LATS1(Large tumor suppressor homolog 1) is also named as WARTS and belongs to the AGC Ser/Thr protein kinase family. The gene encodes a highly conserved (from fly to human) protein kinase that plays a crucial role in the prevention of tumor formation by controlling the progression of mitosis. The expression of both long(170 kDa) and short lats1 isoforms(120 kDa) in vertebrate retinal cells raises the possibility that these lats1 proteins may act as negative key regulators of the cell cycle each of them performing a unique role (PMID:15777619). In mammalian cells, LATS1 was phosphorylated in a cell cycle-dependent manner and complexed with CDC2 in early mitosis (PMID:9988268). LATS1 also can be detected as 120 kDa and 140-150 kDa, and play a key role in the regulation of Hippo pathway (PMID: 27940445).

Bemerkenswerte Veröffentlichungen

Verfasser	Pubmed ID	Journal	Anwendung
Zakiyatul Faizah	32987643	Molecules	WB
Deqiang Kong	34508829	Biochim Biophys Acta Mol Basis Dis	WB
Xiehong Liu	30256412	J Cell Physiol	WB

Lagerung

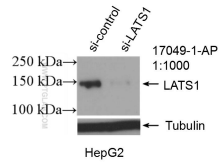
Lagerungsbedingungen:
Bei -20°C lagern. Nach dem Versand ein Jahr lang stabil
Lagerungspuffer:
PBS mit 0.02% Natriumazid und 50% Glycerin pH 7.3.
Aliquotieren ist nicht notwendig bei -20°C Lagerung

*** 20ul-Größen enthalten 0.1% BSA

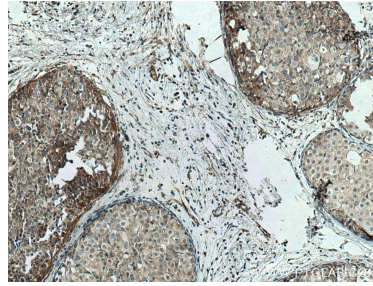
For technical support and original validation data for this product please contact:
T: 1 (888) 4PTGLAB (1-888-478-4522) (toll free in USA), or 1(312) 455-8498 (outside USA)
E: proteintech@ptglab.com
W: ptglab.com

This product is exclusively available under Proteintech Group brand and is not available to purchase from any other manufacturer.

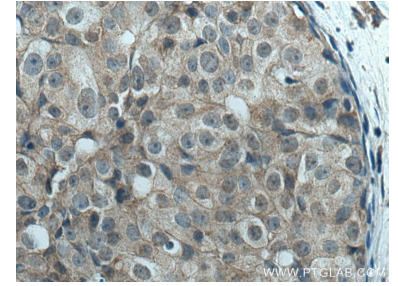
Ausgewählte Validierungsdaten



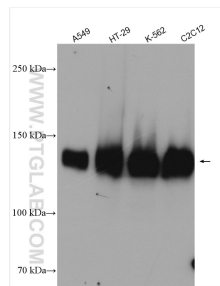
WB result of LATS1 antibody (17049-1-AP; 1:1000; incubated at room temperature for 1.5 hours) with sh-Control and sh-LATS1 transfected HepG2 cells.



Immunohistochemical analysis of paraffin-embedded human breast cancer tissue slide using 17049-1-AP (LATS1 antibody) at dilution of 1:200 (under 10x lens). Heat mediated antigen retrieval with Tris-EDTA buffer (pH 9.0).



Immunohistochemical analysis of paraffin-embedded human breast cancer tissue slide using 17049-1-AP (LATS1 antibody) at dilution of 1:200 (under 40x lens). Heat mediated antigen retrieval with Tris-EDTA buffer (pH 9.0).



Various lysates were subjected to SDS PAGE followed by western blot with 17049-1-AP (LATS1 antibody) at dilution of 1:6000 incubated at room temperature for 1.5 hours.