

Nur für Forschungszwecke

# SPHK2 Polyklonaler Antikörper

Katalog-Nr.:17096-1-AP

Vorgestelltes Produkt

30 Publikationen



## Allgemeine Informationen

Katalog-Nr.:  
17096-1-AP

Größe:  
150ul, Konzentration: 550 µg/ml von  
Nanodrop;

Wirt:  
Kaninchen

Isotyp:  
IgG

Immunogen Katalognummer:  
AG10569

GenBank-Zugangsnummer:  
BC010671

GeneID (NCBI):  
56848

Vollständiger Name:  
sphingosine kinase 2

Berechnete Masse:  
618 aa, 65 kDa

Beobachtete Masse:  
65-70 kDa

Reinigungsmethode:

Antigen-Affinitätsreinigung

Empfohlene Verdünnungen:

WB 1:1000-1:6000

IP 0.5-4.0 µg für IP und 1:500-1:1000  
für WB

IHC 1:50-1:500

IF 1:200-1:800

## Anwendungen

Geprüfte Anwendungen:

IF, IHC, IP, WB, ELISA

In Publikationen genannte Anwendungen:

CoIP, FC, IF, IHC, IP, WB

Getestete Reaktivität:

Human, Maus, Ratte

Zitierte Arten:

Human, Maus, Ratte, Zebrafisch

**Hinweis-IHC: Antigendemaskierung mit TE-Puffer pH 9,0 empfohlen. (\*) Wahlweise kann die Antigendemaskierung auch mit Citratpuffer pH 6,0 erfolgen.**

Positivkontrollen:

WB: LO2-Zellen, A549-Zellen, HCT 116-Zellen, humanes Nierengewebe, Mausherzgewebe, Maushirngewebe, Mauslebergewebe, Mausnierengewebe, Raji-Zellen, Rattenhirngewebe

IP: Mauslebergewebe,

IHC: humanes Mammakarzinomgewebe, humanes Lebergewebe, humanes Nierengewebe

IF: HeLa-Zellen,

## Hintergrundinformationen

SPHK2(Sphingosine kinase 2) is also named as SK2, SPK2 and catalyzes the phosphorylation of sphingosine to form sphingosine 1-phosphate (SPP), a lipid mediator with both intra- and extracellular functions. SPHK2 associates with HDAC1 and HDAC2 in repressor complexes and is selectively enriched at the promoters of the genes encoding the cyclin-dependent kinase inhibitor p21 or the transcriptional regulator c-fos, where it enhanced local histone H3 acetylation and transcription. SphK2 is a ~66kDa protein that is most abundantly expressed in the liver and heart (PMID:19168577). SphK2 has two splice variants, which are the 68-kDa SphK2-S and the NH2-terminal extended 72-kDa SphK2-L (PMID:17974990).

## Bemerkenswerte Veröffentlichungen

Verfasser	Pubmed ID	Journal	Anwendung
Heidi A Neubauer	30250299	Oncogene	WB,IF,IP
Mengqiong Xu	36070294	PLoS Pathog	CoIP
Teresa Sanchez	12954648	J Biol Chem	WB

## Lagerung

Lagerungsbedingungen:

Bei -20°C lagern. Nach dem Versand ein Jahr lang stabil

Lagerungspuffer:

PBS mit 0.02% Natriumazid und 50% Glycerin pH 7.3.

Aliquotieren ist nicht notwendig bei -20°C Lagerung

\*\*\* 20ul-Größen enthalten 0.1% BSA

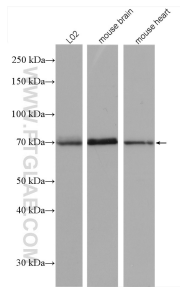
For technical support and original validation data for this product please contact:

T: 1 (888) 4PTGLAB (1-888-478-4522) (toll free in USA), or 1(312) 455-8498 (outside USA)

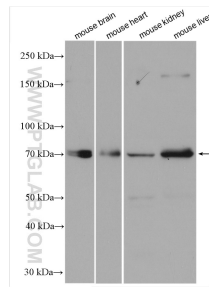
E: proteintech@ptglab.com  
W: ptglab.com

This product is exclusively available under Proteintech Group brand and is not available to purchase from any other manufacturer.

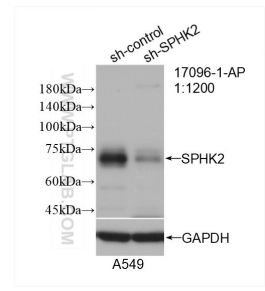
## Ausgewählte Validierungsdaten



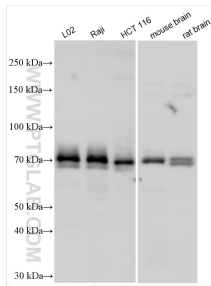
Various lysates were subjected to SDS PAGE followed by western blot with 17096-1-AP (SPHK2 antibody) at dilution of 1:3000 incubated at room temperature for 1.5 hours.



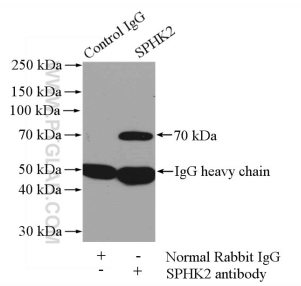
Various lysates were subjected to SDS PAGE followed by western blot with 17096-1-AP (SPHK2 antibody) at dilution of 1:3000 incubated at room temperature for 1.5 hours.



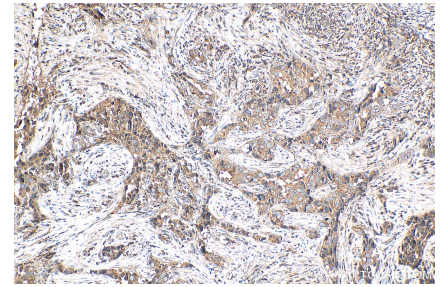
WB result of SPHK2 antibody (17096-1-AP; 1:1200; incubated at room temperature for 1.5 hours) with sh-Control and sh-SPHK2 transfected A549 cells.



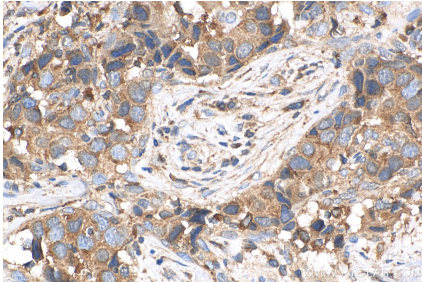
Various lysates were subjected to SDS PAGE followed by western blot with 17096-1-AP (SPHK2 antibody) at dilution of 1:3000 incubated at room temperature for 1.5 hours.



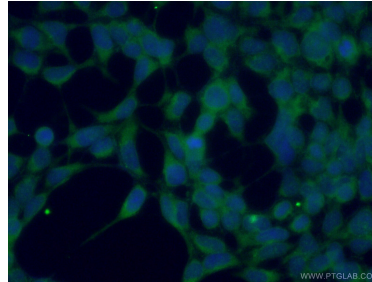
IP Result of anti-SPHK2 (IP:17096-1-AP, 4ug; Detection:17096-1-AP 1:800) with mouse liver tissue lysate 4000ug.



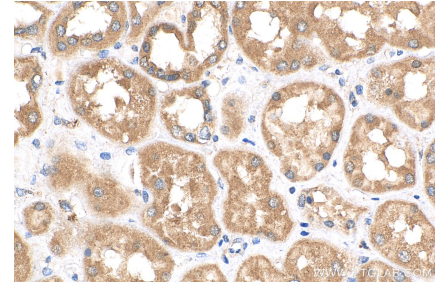
Immunohistochemical analysis of paraffin-embedded human breast cancer tissue slide using 17096-1-AP (SPHK2 antibody) at dilution of 1:200 (under 10x lens). Heat mediated antigen retrieval with Tris-EDTA buffer (pH 9.0).



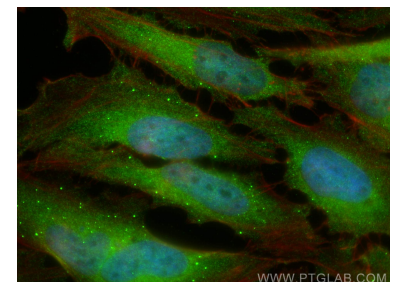
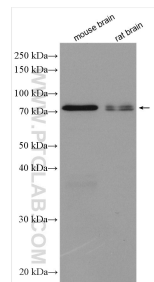
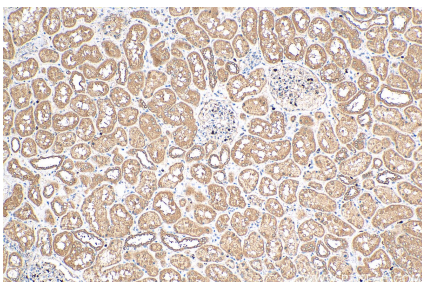
Immunohistochemical analysis of paraffin-embedded human breast cancer tissue slide using 17096-1-AP (SPHK2 antibody) at dilution of 1:200 (under 40x lens). Heat mediated antigen retrieval with Tris-EDTA buffer (pH 9.0).



Immunofluorescent analysis of (-20°C Ethanol) fixed HEK-293 cells using 17096-1-AP (SPHK2 antibody) at dilution of 1:50 and Alexa Fluor 488-Conjugated AffiniPure Goat Anti-Rabbit IgG(H+L).



Immunohistochemical analysis of paraffin-embedded human kidney tissue slide using 17096-1-AP (SPHK2 antibody) at dilution of 1:200 (under 40x lens). Heat mediated antigen retrieval with Tris-EDTA buffer (pH 9.0).



WWW.PTGLAB.COM

Immunohistochemical analysis of paraffin-embedded human kidney tissue slide using 17096-1-AP (SPHK2 antibody) at dilution of 1:200 (under 10x lens). Heat mediated antigen retrieval with Tris-EDTA buffer (pH 9.0).

Various lysates were subjected to SDS PAGE followed by western blot with 17096-1-AP (SPHK2 antibody) at dilution of 1:5000 incubated at room temperature for 1.5 hours.

Immunofluorescent analysis of (4% PFA) fixed HeLa cells using SPHK2 antibody (17096-1-AP) at dilution of 1:400 and CoraLite@488-Conjugated AffiniPure Goat Anti-Rabbit IgG(H+L), CL594-Phalloidin (red).