

Nur für Forschungszwecke

G-CSF Polyklonaler Antikörper

Katalog-Nr.:17185-1-AP

2 Publikationen



Allgemeine Informationen

Katalog-Nr.: 17185-1-AP	GenBank-Zugangsnummer: BC033245	Reinigungsmethode: Antigen-Affinitätsreinigung
Größe: 150ul , Konzentration: 170 µg/ml von Nanodrop und 167 µg/ml durch die Bradford-Methode mit BSA als Standard;	GeneID (NCBI): 1440	Empfohlene Verdünnungen: WB 1:500-1:2000
Wirt: Kaninchen	Vollständiger Name: colony stimulating factor 3 (granulocyte)	
Isotyp: IgG	Berechnete Masse: 200 aa, 22 kDa	
Immunogen Katalognummer: AG10968	Beobachtete Masse: 20 kDa	

Anwendungen

Geprüfte Anwendungen: FC, WB, ELISA	Positivkontrollen: WB : HeLa-Zellen, HepG2-Zellen, K-562-Zellen, MCF-7-Zellen, MOLT-4-Zellen
In Publikationen genannte Anwendungen: IHC, WB	
Getestete Reaktivität: Human	
Zitierte Arten: Human	

Hintergrundinformationen

Granulocyte colony-stimulating factor (G-CSF), also referred to as CSF3, is a protective cytokine with anti-inflammatory effects. G-CSF is important in promoting survival of the granulocytic lineage cells and proliferation and migration of neutrophils as well as trophoblast cells. G-CSF acts by binding to its receptor G-CSFR (also called CSF3R), which after binding with G-CSF activates the canonical Janus kinase (Jak)/signal transducer, activator of transcription (STAT) and Ras/Raf/MAP kinase pathways. G-CSF potently stimulates the proliferation and release of peripheral blood progenitor cells into the bloodstream and is therefore used to treat neutropenia after chemotherapy. Furthermore, G-CSF levels are elevated upon intensive exercise leading to increased neutrophil counts, which are predominantly due to delayed neutrophil apoptosis.

Bemerkenswerte Veröffentlichungen

Verfasser	Pubmed ID	Journal	Anwendung
Zheng Zhang	31765840	Mol Immunol	IHC
Wei Jiang	36982170	Int J Mol Sci	WB,IHC

Lagerung

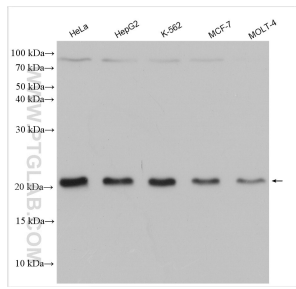
Lagerungsbedingungen:
Bei -20°C lagern. Nach dem Versand ein Jahr lang stabil
Lagerungspuffer:
PBS mit 0.02% Natriumazid und 50% Glycerin pH 7.3.
Aliquotieren ist nicht notwendig bei -20°C Lagerung

*** 20ul-Größen enthalten 0.1% BSA

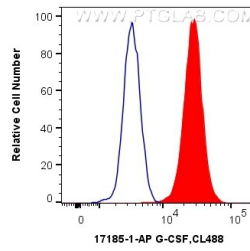
For technical support and original validation data for this product please contact:
T: 1 (888) 4PTGLAB (1-888-478-4522) (toll free in USA), or 1(312) 455-8498 (outside USA)
E: proteintech@ptglab.com
W: ptglab.com

This product is exclusively available under Proteintech Group brand and is not available to purchase from any other manufacturer.

Ausgewählte Validierungsdaten



Various lysates were subjected to SDS PAGE followed by western blot with 17185-1-AP (G-CSF antibody) at dilution of 1:1000 incubated at room temperature for 1.5 hours.



1×10^6 K-562 cells were intracellularly stained with 0.4 μ g Anti-Human G-CSF (17185-1-AP) and CoraLite® 488-Conjugated AffiniPure Goat Anti-Rabbit IgG(H+L) at dilution 1:1000 (red), or 0.4 μ g Control Antibody. Cells were fixed with 4% PFA and permeabilized with Flow Cytometry Perm Buffer (PF00011-C).