

Nur für Forschungszwecke

CD5L Polyklonaler Antikörper

Katalog-Nr.:17224-1-AP



Allgemeine Informationen

Katalog-Nr.:

17224-1-AP

Größe:

150ul , Konzentration: 133 µg/ml
durch die Bradford-Methode mit BSA
als Standard;

Wirt:

Kaninchen

Isotyp:

IgG

Immunogen Katalognummer:

AG11062

GenBank-Zugangsnummer:

BC033586

GeneID (NCBI):

922

Vollständiger Name:

CD5 molecule-like

Berechnete Masse:

347 aa, 38 kDa

Beobachtete Masse:

40 kDa

Reinigungsmethode:

Antigen-Affinitätsreinigung

Empfohlene Verdünnungen:

WB 1:500-1:2000

Anwendungen

Geprüfte Anwendungen:

WB, ELISA

Getestete Reaktivität:

Human

Positivkontrollen:

WB : human plasma,

Hintergrundinformationen

CD5 molecule-like (CD5L), also known as apoptosis inhibitor expressed by macrophages (AIM), SP-alpha, apoptosis inhibitor 6 (API6), is a member of the scavenger receptor cysteine-rich (SRCR) family of proteins (PMID: 9045627; 9892623). CD5L is a soluble protein mainly secreted mostly by macrophages in lymphoid and inflamed tissues (PMID: 15009805). It contains three SRCR domains, each approximately 100 amino acids in length with sialic acid content at a potential region of O-linked glycosylation between SRCR domains 1 and 2. CD5L is involved in different processes such as metabolism, infection and autophagy (PMID: 33920819).

Lagerung

Lagerungsbedingungen:

Bei -20°C lagern. Nach dem Versand ein Jahr lang stabil

Lagerungspuffer:

PBS mit 0.02% Natriumazid und 50% Glycerin pH 7.3.

Aliquotieren ist nicht notwendig bei -20°C Lagerung

*** 20ul-Größen enthalten 0.1% BSA

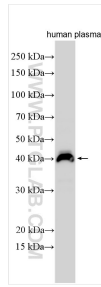
For technical support and original validation data for this product please contact:

T: 1 (888) 4PTGLAB (1-888-478-4522) (toll free
in USA), or 1(312) 455-8498 (outside USA)

E: proteintech@ptglab.com
W: ptglab.com

This product is exclusively available under Proteintech Group brand and is not available to purchase from any other manufacturer.

Ausgewählte Validierungsdaten



human plasma was subjected to SDS PAGE followed by western blot with 17224-1-AP (CD5L antibody) at dilution of 1:1000 incubated at room temperature for 1.5 hours.