

Nur für Forschungszwecke

TBC1D15 Polyklonaler Antikörper

Katalog-Nr.:17252-1-AP



Allgemeine Informationen

Katalog-Nr.: 17252-1-AP	GenBank-Zugangsnummer: BC028352	Reinigungsmethode: Antigen-Affinitätsreinigung
Größe: 150ul , Konzentration: 300 µg/ml von Nanodrop und 160 µg/ml durch die Bradford-Methode mit BSA als Standard;	GeneID (NCBI): 64786	Empfohlene Verdünnungen: WB 1:500-1:1000
Wirt: Kaninchen	Vollständiger Name: TBC1 domain family, member 15	
Isotyp: IgG	Berechnete Masse: 691 aa, 79 kDa	
Immunogen Katalognummer: AG10625	Beobachtete Masse: 79 kDa	

Anwendungen

Geprüfte Anwendungen: WB, ELISA	Positivkontrollen: WB : HeLa-Zellen, A431-Zellen, HEK-293T-Zellen, HepG2-Zellen, Mauslebergewebe, Rattenlebergewebe
Getestete Reaktivität: Human, Maus, Ratte	

Hintergrundinformationen

TBC1D15 is a highly conserved protein belonging to the TBC domain family and has similar functions to Rab-GAP. TBC1D15 is ubiquitously expressed and localized predominantly to the cytosol. TBC1D15 is a protein that contains a conserved Tre2/Bub2/Cdc16 (TBC) domain. TBC1D15 can serve as a mitochondrial Rab GTPase-activating protein (Rab-GAP) and influence autophagosome biogenesis and morphology downstream of Parkin activation. TBC1D15 can also control stem cell self-renewal when coupled with the Numb-p53 complex.

Lagerung

Lagerungsbedingungen:
Bei -20°C lagern. Nach dem Versand ein Jahr lang stabil

Lagerungspuffer:
PBS mit 0.02% Natriumazid und 50% Glycerin pH 7.3.

Aliquotieren ist nicht notwendig bei -20°C Lagerung

***** 20ul-Größen enthalten 0.1% BSA**

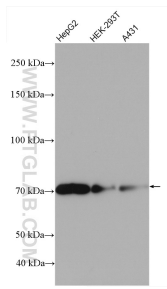
For technical support and original validation data for this product please contact:

T: 1 (888) 4PTGLAB (1-888-478-4522) (toll free
in USA), or 1(312) 455-8498 (outside USA)

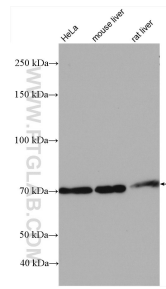
E: proteintech@ptglab.com
W: ptglab.com

This product is exclusively available under Proteintech Group brand and is not available to purchase from any other manufacturer.

Ausgewählte Validierungsdaten



Various lysates were subjected to SDS PAGE followed by western blot with 17252-1-AP (TBC1D15 antibody) at dilution of 1:600 incubated at room temperature for 1.5 hours.



Various lysates were subjected to SDS PAGE followed by western blot with 17252-1-AP (TBC1D15 antibody) at dilution of 1:600 incubated at room temperature for 1.5 hours.