

Nur für Forschungszwecke

Cytokeratin 16 Polyklonaler Antikörper



Katalog-Nr.:17265-1-AP

1 Publikationen

Allgemeine Informationen

Katalog-Nr.: 17265-1-AP	GenBank-Zugangsnummer: BC039169	Reinigungsmethode: Antigen-Affinitätsreinigung
Größe: 150ul , Konzentration: 260 µg/ml von Nanodrop und 133 µg/ml durch die Bradford-Methode mit BSA als Standard;	GeneID (NCBI): 3868	Empfohlene Verdünnungen: WB 1:5000-1:50000 IHC 1:500-1:2000 IF 1:50-1:500
Wirt: Kaninchen	Vollständiger Name: keratin 16	
Isotyp: IgG	Berechnete Masse: 473 aa, 51 kDa	
Immunogen Katalognummer: AG10999	Beobachtete Masse: 48 kDa	

Anwendungen

Geprüfte Anwendungen: FC, IF, IHC, WB, ELISA	Positivkontrollen: WB : HeLa-Zellen, A375-Zellen, MCF-7-Zellen
In Publikationen genannte Anwendungen: IF	IHC : humanes Ösophaguskarzinomgewebe, humanes Hautgewebe, humanes Zervixkarzinomgewebe, Maushautgewebe
Getestete Reaktivität: Human, Maus	IF : A431-Zellen,
Zitierte Arten: Maus	

Hinweis-IHC: Antigendemaskierung mit TE-Puffer pH 9,0 empfohlen. (*) Wahlweise kann die Antigendemaskierung auch mit Citratpuffer pH 6,0 erfolgen.

Hintergrundinformationen

Keratins are a large family of proteins that form the intermediate filament cytoskeleton of epithelial cells, which are classified into two major sequence types. Type I keratins are a group of acidic intermediate filament proteins, including K9-K23, and the hair keratins Ha1-Ha8. Type II keratins are the basic or neutral counterparts to the acidic type I keratins, including K1-K8, and the hair keratins, Hb1-Hb6. Keratin 16 is a type I cytokeratin. It is paired with keratin 6 in a number of epithelial tissues, including nail bed, esophagus, tongue, and hair follicles.

Bemerkenswerte Veröffentlichungen

Verfasser	Pubmed ID	Journal	Anwendung
Lusheng Wang	36733502	Front Pharmacol	IF

Lagerung

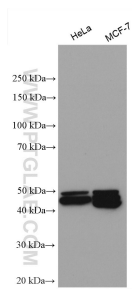
Lagerungsbedingungen:
Bei -20°C lagern. Nach dem Versand ein Jahr lang stabil
Lagerungspuffer:
PBS mit 0.02% Natriumazid und 50% Glycerin pH 7.3.
Aliquotieren ist nicht notwendig bei -20°C Lagerung

*** 20ul-Größen enthalten 0.1% BSA

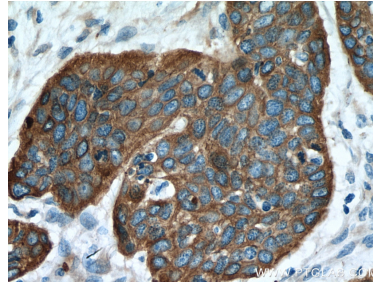
For technical support and original validation data for this product please contact:
T: 1 (888) 4PTGLAB (1-888-478-4522) (toll free in USA), or 1(312) 455-8498 (outside USA)
E: proteintech@ptglab.com
W: ptglab.com

This product is exclusively available under Proteintech Group brand and is not available to purchase from any other manufacturer.

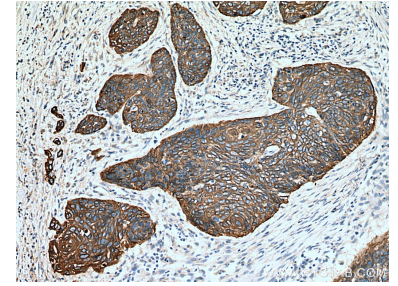
Ausgewählte Validierungsdaten



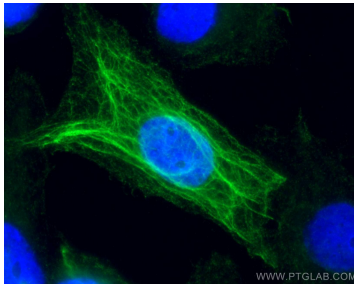
Various lysates were subjected to SDS PAGE followed by western blot with 17265-1-AP (Cytokeratin 16 antibody) at dilution of 1:10000 incubated at room temperature for 1.5 hours.



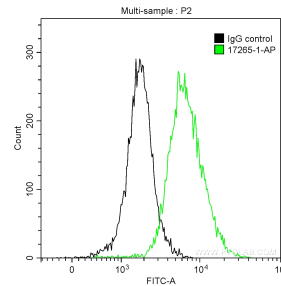
Immunohistochemical analysis of paraffin-embedded human oesophagus cancer tissue slide using 17265-1-AP (Cytokeratin 16 antibody) at dilution of 1:1000 (under 40x lens). Heat mediated antigen retrieval with Tris-EDTA buffer (pH 9.0).



Immunohistochemical analysis of paraffin-embedded human oesophagus cancer tissue slide using 17265-1-AP (Cytokeratin 16 antibody) at dilution of 1:1000 (under 10x lens). Heat mediated antigen retrieval with Tris-EDTA buffer (pH 9.0).



Immunofluorescent analysis of (-20°C Ethanol) fixed A431 cells using Cytokeratin 16 antibody (17265-1-AP) at dilution of 1:200 and CoraLite® 488-Conjugated AffiniPure Goat Anti-Rabbit IgG(H+L).



1×10^6 A431 cells were intracellularly stained with 0.2 μ g Anti-Human Cytokeratin 16 (17265-1-AP) and CoraLite® 488-Conjugated AffiniPure Goat Anti-Rabbit IgG(H+L) at dilution 1:1000 (green), and 0.2 μ g Control Antibody. Cells were fixed with 90% MeOH.