

Nur für Forschungszwecke

MYL7 Polyklonaler Antikörper

Katalog-Nr.:17283-1-AP

14 Publikationen



Allgemeine Informationen

Katalog-Nr.: 17283-1-AP	GenBank-Zugangsnummer: BC027915	Reinigungsmethode: Antigen-Affinitätsreinigung
Größe: 150ul, Konzentration: 650 µg/ml von Nanodrop;	GeneID (NCBI): 58498	Empfohlene Verdünnungen: WB 1:1000-1:4000 IP 0.5-4.0 ug für IP und 1:500-1:1000 für WB
Wirt: Kaninchen	Vollständiger Name: myosin, light chain 7, regulatory	IHC 1:50-1:500 IF 1:50-1:500
Isotyp: IgG	Berechnete Masse: 175 aa, 19 kDa	
Immunogen Katalognummer: AG11058	Beobachtete Masse: 19 kDa	

Anwendungen

Geprüfte Anwendungen:
FC, IF, IHC, IP, WB, ELISA

In Publikationen genannte Anwendungen:
IF, IHC, WB

Getestete Reaktivität:
Human, Maus, Ratte

Zitierte Arten:
Human, Maus, Ratte

Hinweis-IHC: Antigenmaskierung mit TE-Puffer pH 9,0 empfohlen. (*) Wahlweise kann die Antigenmaskierung auch mit Citratpuffer pH 6,0 erfolgen.

Positivkontrollen:

WB: Mausherzgewebe, Maus-Skelettmuskelgewebe, Ratten-Skelettmuskelgewebe

IP: Mausherzgewebe,

IHC: Mausherzgewebe, humanes Herzgewebe

IF: Mausherzgewebe,

Hintergrundinformationen

MYL7, also known as myosin light chain 2a (MLC2a), is essential for heart development. The expression of MYL7 in heart is predominatantly restricted to the atrium. So its expression has been considered as useful marker for atrial cardiomyocytes.

Bemerkenswerte Veröffentlichungen

Verfasser	Pubmed ID	Journal	Anwendung
Yuanbiao Zhao	26354680	Nat Commun	IF
Farhad Khosravi	35453733	Biology (Basel)	WB
Xiangyu Zhang	35246800	Stem Cell Rev Rep	IF

Lagerung

Lagerungsbedingungen:

Bei -20°C lagern. Nach dem Versand ein Jahr lang stabil

Lagerungspuffer:

PBS mit 0.02% Natriumazid und 50% Glycerin pH 7.3.

Aliquotieren ist nicht notwendig bei -20°C Lagerung

***** 20ul-Größen enthalten 0.1% BSA**

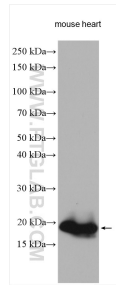
For technical support and original validation data for this product please contact:

T: 1 (888) 4PTGLAB (1-888-478-4522) (toll free in USA), or 1(312) 455-8498 (outside USA)

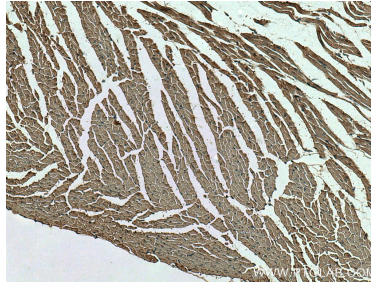
E: proteintech@ptglab.com
W: ptglab.com

This product is exclusively available under Proteintech Group brand and is not available to purchase from any other manufacturer.

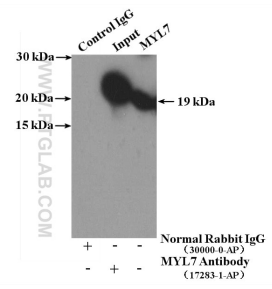
Ausgewählte Validierungsdaten



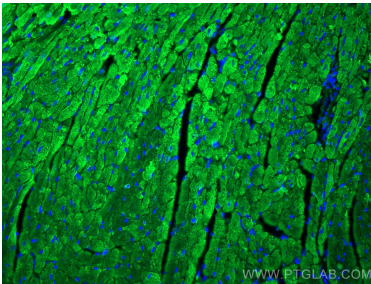
Mouse heart lysates were subjected to SDS PAGE followed by western blot with 17283-1-AP (MYL7 antibody) at dilution of 1:2000 incubated at room temperature for 1.5 hours.



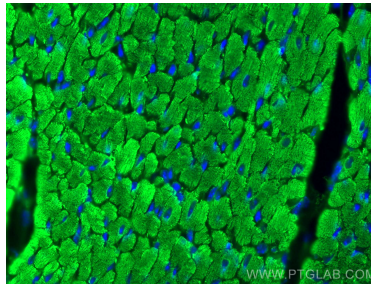
Immunohistochemical analysis of paraffin-embedded mouse heart tissue slide using 17283-1-AP (MYL7 antibody) at dilution of 1:200 (under 10x lens). Heat mediated antigen retrieval with Tris-EDTA buffer (pH 9.0).



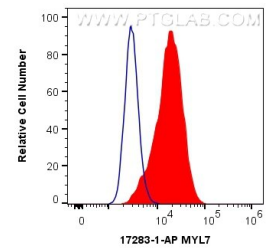
IP Result of anti-MYL7 (IP:17283-1-AP, 4ug; Detection:17283-1-AP 1:700) with mouse heart tissue lysate 4000ug.



Immunofluorescent analysis of (4% PFA) fixed mouse heart tissue using MYL7 antibody (17283-1-AP) at dilution of 1:200 and CoraLite@488-Conjugated AffiniPure Goat Anti-Rabbit IgG(H+L).



Immunofluorescent analysis of (4% PFA) fixed mouse heart tissue using MYL7 antibody (17283-1-AP) at dilution of 1:200 and CoraLite@488-Conjugated AffiniPure Goat Anti-Rabbit IgG(H+L).



1×10^6 C2C12 cells were intracellularly stained with 0.5 ug Anti-Human MYL7 (17283-1-AP) and CoraLite@488-Conjugated AffiniPure Goat Anti-Rabbit IgG(H+L) at dilution 1:1000 (red), or 0.5 ug Control Antibody. Cells were fixed with 4% PFA and permeabilized with Flow Cytometry Perm Buffer (PF00011-C).