

Nur für Forschungszwecke

Cytokeratin 20 Polyklonaler Antikörper



Katalog-Nr.:17329-1-AP

10 Publikationen

Allgemeine Informationen

Katalog-Nr.: 17329-1-AP	GenBank-Zugangsnummer: BC031559	Reinigungsmethode: Antigen-Affinitätsreinigung
Größe: 150ul , Konzentration: 1100 µg/ml von54474	GeneID (NCBI): keratin 20	Empfohlene Verdünnungen: WB 1:2000-1:16000 IHC 1:1000-1:4000 IF 1:1000-1:4000
Nanodrop;	Vollständiger Name: keratin 20	
Wirt: Kaninchen	Berechnete Masse: 424 aa, 48 kDa	
Isotyp: IgG	Beobachtete Masse: 46 kDa	
Immunogen Katalognummer: AG11308		

Anwendungen

Geprüfte Anwendungen:

FC, IF, IHC, WB, ELISA

In Publikationen genannte Anwendungen:

IF, IHC, WB

Getestete Reaktivität:

Human, Kaninchen, Maus, Ratte

Zitierte Arten:

Human, Maus

Positivkontrollen:

WB : COLO 320-Zellen, HeLa-Zellen, HT-29-Zellen, MCF-7-Zellen

IHC : humanes Kolongewebe, humanes Appendizitis-Gewebe, humanes Magenkrebsgewebe, humanes Urothelkarzinomgewebe

IF : HT-29-Zellen, HeLa-Zellen

Hinweis-IHC: Antigendemaskierung mit TE-Puffer pH 9,0 empfohlen. (*) Wahlweise kann die Antigendemaskierung auch mit Citratpuffer pH 6,0 erfolgen.

Hintergrundinformationen

Keratins are a large family of proteins that form the intermediate filament cytoskeleton of epithelial cells, which are classified into two major sequence types. Type I keratins are a group of acidic intermediate filament proteins, including K9-K23, and the hair keratins Ha1-Ha8. Type II keratins are the basic or neutral counterparts to the acidic type I keratins, including K1-K8, and the hair keratins, Hb1-Hb6. Keratin 20 is a type I cyokeratin. It is a major cellular protein of mature enterocytes and goblet cells and is specifically found in the gastric and intestinal mucosa.

Bemerkenswerte Veröffentlichungen

Verfasser	Pubmed ID	Journal	Anwendung
Pingping Zhu	30224759	Nat Cell Biol	WB
Ziyi Wang	36387215	Front Oncol	WB
Qi Cheng	35561877	Cancer Lett	IF

Lagerung

Lagerungsbedingungen:

Bei -20°C lagern. Nach dem Versand ein Jahr lang stabil

Lagerungspuffer:

PBS mit 0.02% Natriumazid und 50% Glycerin pH 7.3.

Aliquotieren ist nicht notwendig bei -20°C Lagerung

*** 20ul-Größen enthalten 0.1% BSA

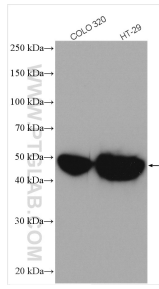
For technical support and original validation data for this product please contact:

T: 1 (888) 4PTGLAB (1-888-478-4522) (toll free in USA), or 1(312) 455-8498 (outside USA)

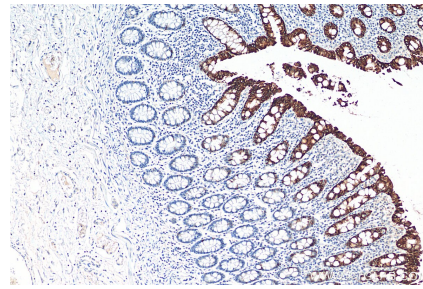
E: proteintech@ptglab.com
W: ptglab.com

This product is exclusively available under Proteintech Group brand and is not available to purchase from any other manufacturer.

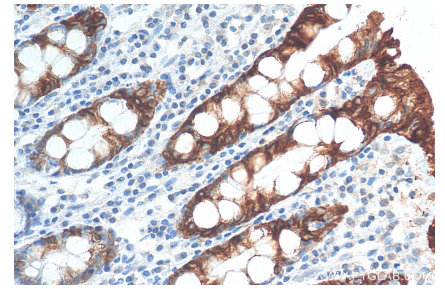
Ausgewählte Validierungsdaten



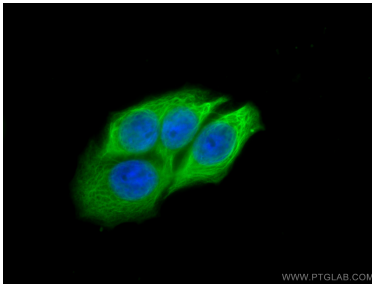
Various lysates were subjected to SDS PAGE followed by western blot with 17329-1-AP (Cytokeratin 20 antibody) at dilution of 1:8000 incubated at room temperature for 1.5 hours.



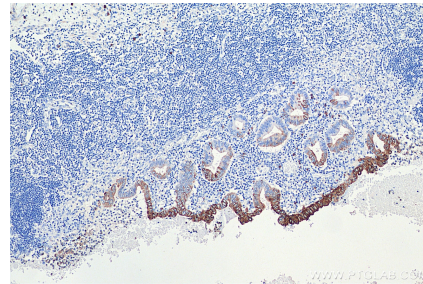
Immunohistochemical analysis of paraffin-embedded human colon tissue slide using 17329-1-AP (Cytokeratin 20 antibody) at dilution of 1:2000 (under 10x Lens). Heat mediated antigen retrieval with Tris-EDTA buffer (pH 9.0).



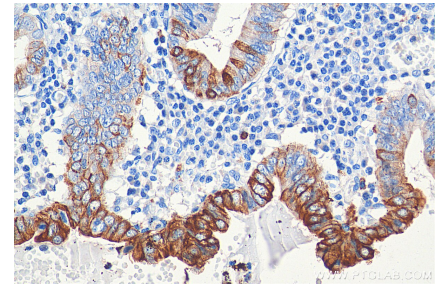
Immunohistochemical analysis of paraffin-embedded human colon tissue slide using 17329-1-AP (Cytokeratin 20 antibody) at dilution of 1:2000 (under 40x Lens). Heat mediated antigen retrieval with Tris-EDTA buffer (pH 9.0).



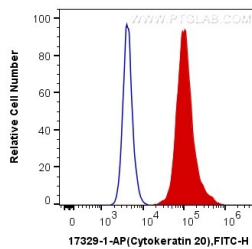
Immunofluorescent analysis of (-20°C Methanol) fixed HT-29 cells using Cytokeratin 20 antibody (17329-1-AP) at dilution of 1:2000 and CoraLite®488-Conjugated AffiniPure Goat Anti-Rabbit IgG(H+L).



Immunohistochemical analysis of paraffin-embedded human appendicitis tissue slide using 17329-1-AP (Cytokeratin 20 antibody) at dilution of 1:5000 (under 10x lens). Heat mediated antigen retrieval with Tris-EDTA buffer (pH 9.0).



Immunohistochemical analysis of paraffin-embedded human appendicitis tissue slide using 17329-1-AP (Cytokeratin 20 antibody) at dilution of 1:5000 (under 40x lens). Heat mediated antigen retrieval with Tris-EDTA buffer (pH 9.0).



1×10^6 HT-29 cells were intracellularly stained with 0.2 ug Anti-Human Cytokeratin 20 (17329-1-AP) and CoraLite®488-Conjugated AffiniPure Goat Anti-Rabbit IgG(H+L) at dilution 1:1000 (red), or 0.2 ug Control Antibody. Cells were fixed with 4% PFA and permeabilized with Flow Cytometry Perm Buffer (PF00011-C).