

Nur für Forschungszwecke

LY6D Polyklonaler Antikörper

Katalog-Nr.:17361-1-AP

Vorgestelltes Produkt

11 Publikationen



Allgemeine Informationen

Katalog-Nr.: 17361-1-AP	GenBank-Zugangsnummer: BC031330	Reinigungsmethode: Antigen-Affinitätsreinigung
Größe: 150ul, Konzentration: 700 µg/ml von Nanodrop;	GeneID (NCBI): 8581	Empfohlene Verdünnungen: WB 1:500-1:3000 IHC 1:20-1:200 IF 1:50-1:500
Wirt: Kaninchen	Vollständiger Name: lymphocyte antigen 6 complex, locus D	
Isotyp: IgG	Berechnete Masse: 128 aa, 13 kDa	
Immunogen Katalognummer: AG10714	Beobachtete Masse: 13-14 kDa	

Anwendungen

Geprüfte Anwendungen: IF, IHC, WB, ELISA	Positivkontrollen: WB : A431-Zellen, IHC : humanes Tonsillitisgewebe, humanes Hautkrebsgewebe IF : humanes Prostatakarzinomgewebe,
In Publikationen genannte Anwendungen: IF, IHC, WB	
Getestete Reaktivität: Human, Maus	
Zitierte Arten: Human, Maus	
Hinweis-IHC: Antigendemaskierung mit TE-Puffer pH 9,0 empfohlen. (*) Wahlweise kann die Antigendemaskierung auch mit Citratpuffer pH 6,0 erfolgen.	

Hintergrundinformationen

LY6D, also named as E48 and ThB, may act as a specification marker at earliest stage specification of lymphocytes between B- and T-cell development. It marks the earliest stage of B-cell specification.

Bemerkenswerte Veröffentlichungen

Verfasser	Pubmed ID	Journal	Anwendung
Kui Xiao	34714841	PLoS One	WB
Catherine D Yao	33033234	Nat Commun	IF
Renaud Mevel	33025905	Elife	IF

Lagerung

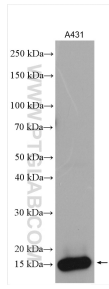
Lagerungsbedingungen:
Bei -20°C lagern. Nach dem Versand ein Jahr lang stabil
Lagerungspuffer:
PBS mit 0.02% Natriumazid und 50% Glycerin pH 7.3.
Aliquotieren ist nicht notwendig bei -20°C Lagerung

*** 20ul-Größen enthalten 0.1% BSA

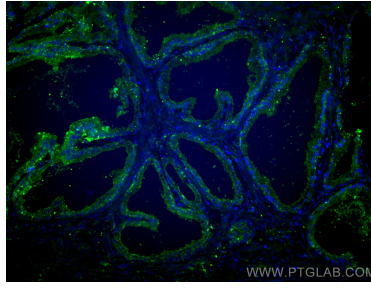
For technical support and original validation data for this product please contact:
T: 1 (888) 4PTGLAB (1-888-478-4522) (toll free in USA), or 1(312) 455-8498 (outside USA)
E: proteintech@ptglab.com
W: ptglab.com

This product is exclusively available under Proteintech Group brand and is not available to purchase from any other manufacturer.

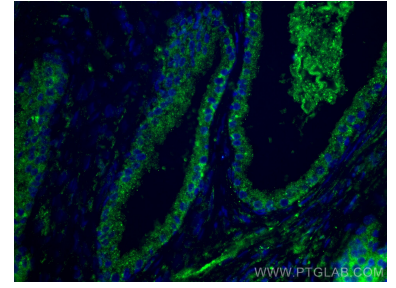
Ausgewählte Validierungsdaten



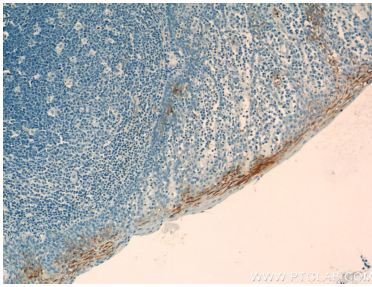
A431 cells were subjected to SDS PAGE followed by western blot with 17361-1-AP (LY6D antibody) at dilution of 1:1500 incubated at room temperature for 1.5 hours.



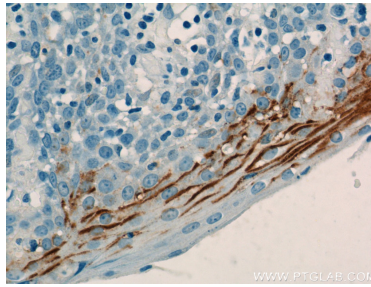
Immunofluorescent analysis of (4% PFA) fixed human prostate cancer tissue using LY6D antibody (17361-1-AP) at dilution of 1:200 and CoraLite®488-Conjugated AffiniPure Goat Anti-Rabbit IgG(H+L).



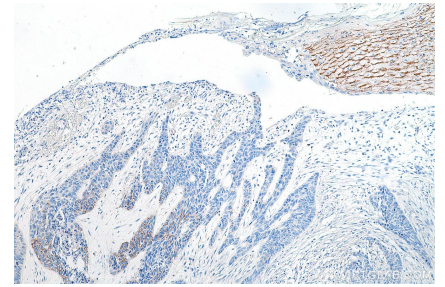
Immunofluorescent analysis of (4% PFA) fixed human prostate cancer tissue using LY6D antibody (17361-1-AP) at dilution of 1:200 and CoraLite®488-Conjugated AffiniPure Goat Anti-Rabbit IgG(H+L).



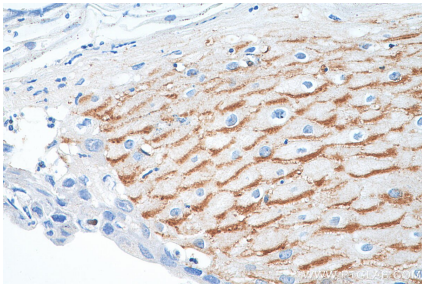
Immunohistochemical analysis of paraffin-embedded human tonsillitis tissue slide using 17361-1-AP (LY6D Antibody) at dilution of 1:50 (under 10x lens).



Immunohistochemical analysis of paraffin-embedded human tonsillitis tissue slide using 17361-1-AP (LY6D Antibody) at dilution of 1:50 (under 40x lens).



Immunohistochemical analysis of paraffin-embedded human skin cancer tissue slide using 17361-1-AP (LY6D antibody) at dilution of 1:200 (under 10x lens).



Immunohistochemical analysis of paraffin-embedded human skin cancer tissue slide using 17361-1-AP (LY6D antibody) at dilution of 1:200 (under 40x lens).