

Nur für Forschungszwecke

Cytokeratin 6B Polyklonaler Antikörper



Katalog-Nr.:17391-1-AP

Vorgestelltes Produkt

2 Publikationen

Allgemeine Informationen

Katalog-Nr.: 17391-1-AP	GenBank-Zugangsnummer: BC034535	Reinigungsmethode: Antigen-Affinitätsreinigung
Größe: 150ul , Konzentration: 400 µg/ml von Nanodrop und 213 µg/ml durch die Bradford-Methode mit BSA als Standard;	GeneID (NCBI): 3854	Empfohlene Verdünnungen: WB 1:1600-1:5000 IHC 1:50-1:500 IF 1:200-1:800
Wirt: Kaninchen	Vollständiger Name: keratin 6B	
Isotyp: IgG	Berechnete Masse: 564 aa, 60 kDa	
Immunogen Katalognummer: AG11288	Beobachtete Masse: 60 kDa	

Anwendungen

Geprüfte Anwendungen: FC, IF, IHC, WB, ELISA	Positivkontrollen: WB : Mauhautgewebe, A431-Zellen, Rattenhautgewebe
In Publikationen genannte Anwendungen: IHC, WB	IHC : humanes Lungenkarzinomgewebe, humanes Mammakarzinomgewebe, humanes Ösophagusgewebe, humanes Tonsillengewebe, humanes Zervixkarzinomgewebe
Getestete Reaktivität: Human, Maus, Ratte	IF : HeLa-Zellen,
Zitierte Arten: Human, Maus	
Hinweis-IHC: Antigenmaskierung mit TE-Puffer pH 9,0 empfohlen. (*) Wahlweise kann die Antigenmaskierung auch mit Citratpuffer pH 6,0 erfolgen.	

Hintergrundinformationen

Keratins are a large family of proteins that form the intermediate filament cytoskeleton of epithelial cells, which are classified into two major sequence types. Type I keratins are a group of acidic intermediate filament proteins, including K9-K23, and the hair keratins Ha1-Ha8. Type II keratins are the basic or neutral counterparts to the acidic type I keratins, including K1-K8, and the hair keratins, Hb1-Hb6. Keratin 6 is a type II keratin. It is used as marker for epidermal hyperproliferation and differentiation. Three keratin 6 isoforms were found, ketatin 6A,6B and 6C. They share more than 99% identical DNA sequence.

Bemerkenswerte Veröffentlichungen

Verfasser	Pubmed ID	Journal	Anwendung
Qiang Song	35794606	J Transl Med	WB
Cui Chang-Yi CY	23439395	J Invest Dermatol	IHC

Lagerung

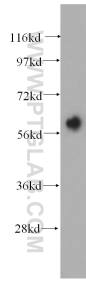
Lagerungsbedingungen:
Bei -20°C lagern. Nach dem Versand ein Jahr lang stabil
Lagerungspuffer:
PBS mit 0.02% Natriumazid und 50% Glycerin pH 7.3.
Aliquotieren ist nicht notwendig bei -20°C Lagerung

*** 20ul-Größen enthalten 0.1% BSA

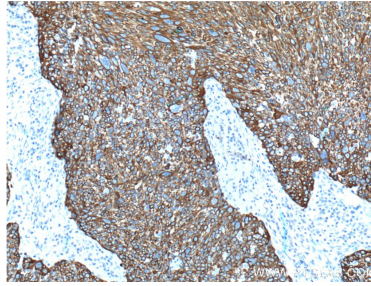
For technical support and original validation data for this product please contact:
T: 1 (888) 4PTGLAB (1-888-478-4522) (toll free in USA), or 1(312) 455-8498 (outside USA)
E: proteintech@ptglab.com
W: ptglab.com

This product is exclusively available under Proteintech Group brand and is not available to purchase from any other manufacturer.

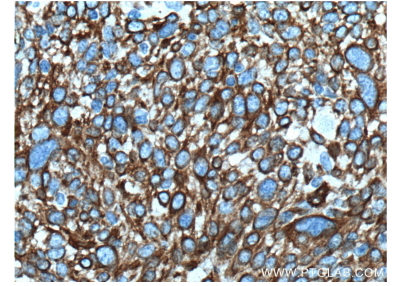
Ausgewählte Validierungsdaten



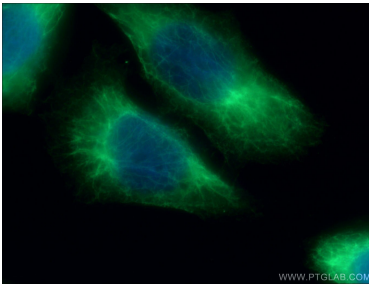
mouse skin tissue were subjected to SDS PAGE followed by western blot with 17391-1-AP (Cytokeratin 6B antibody) at dilution of 1:1000 incubated at room temperature for 1.5 hours.



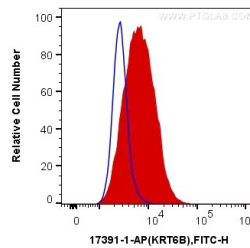
Immunohistochemical analysis of paraffin-embedded human lung cancer tissue slide using 17391-1-AP (Cytokeratin 6B antibody at dilution of 1:1000 (under 10x lens). Heat mediated antigen retrieval with Tris-EDTA buffer (pH 9.0).



Immunohistochemical analysis of paraffin-embedded human lung cancer tissue slide using 17391-1-AP (Cytokeratin 6B antibody at dilution of 1:1000 (under 40x lens). Heat mediated antigen retrieval with Tris-EDTA buffer (pH 9.0).



Immunofluorescent analysis of (-20°C Ethanol) fixed HeLa cells using 17391-1-AP (Cytokeratin 6B antibody) at dilution of 1:50 and Alexa Fluor 488-conjugated AffiniPure Goat Anti-Rabbit IgG(H+L).



1x10⁶ HeLa cells were intracellularly stained with 0.2 ug Anti-Human Cytokeratin 6B (17391-1-AP) and CoraLite®488-Conjugated AffiniPure Goat Anti-Rabbit IgG(H+L) at dilution 1:1000 (red), or 0.2 ug Control Antibody. Cells were fixed with 4% PFA and permeabilized with Flow Cytometry Perm Buffer (PF00011-C).