

Nur für Forschungszwecke

GUF1 Polyklonaler Antikörper

Katalog-Nr.:17489-1-AP

Vorgestelltes Produkt



Allgemeine Informationen

Katalog-Nr.: 17489-1-AP	GenBank-Zugangsnummer: BC036768	Reinigungsmethode: Antigen-Affinitätsreinigung
Größe: 150ul, Konzentration: 500 µg/ml von Nanodrop;	GeneID (NCBI): 60558	Empfohlene Verdünnungen: WB 1:500-1:2400 IP 0.5-4.0 ug für IP und 1:500-1:1000
Wirt: Kaninchen	Vollständiger Name: GUF1 GTPase homolog (<i>S. cerevisiae</i>)	für WB IHC 1:20-1:200 IF 1:10-1:100
Isotyp: IgG	Berechnete Masse: 669 aa, 74 kDa	
Immunogen Katalognummer: AG11579	Beobachtete Masse: 70 kDa	

Anwendungen

Geprüfte Anwendungen:

IF, IHC, IP, WB, ELISA

Getestete Reaktivität:

Human, Maus

Hinweis-IHC: Antigenmaskierung mit TE-Puffer pH 9,0 empfohlen. (*) Wahlweise kann die Antigenmaskierung auch mit Citratpuffer pH 6,0 erfolgen.

Positivkontrollen:

WB: HeLa-Zellen, HepG2-Zellen, Maushirngewebe, Maus-Pankreasgewebe

IP: HeLa-Zellen,

IHC: humanes Ösophagusgewebe, humanes Hodengewebe, humanes Lungenkarzinomgewebe, humanes Nierengewebe

IF: HepG2-Zellen,

Hintergrundinformationen

GUF1 (GUF1 GTPase), also known as EF-4 (elongation factor 4 homolog), is a 669 amino acid protein belonging to the GTP-binding elongation factor family and the LepA subfamily. Localizing to the mitochondrion inner membrane, GUF1 promotes mitochondrial protein synthesis and binds to mitochondrial ribosomes in a GTP-dependent manner. GUF1 may act as a fidelity factor of the translation reaction, by catalyzing a one-codon backward translocation of tRNAs on improperly translocated ribosomes. In western blotting, we got double bands 74 kDa and 70 kDa, due to the N-terminal 1-49 amino acid sequence that could be cut down.

Lagerung

Lagerungsbedingungen:

Bei -20°C lagern. Nach dem Versand ein Jahr lang stabil

Lagerungspuffer:

PBS mit 0.02% Natriumazid und 50% Glycerin pH 7.3.

Aliquotieren ist nicht notwendig bei -20°C Lagerung

*** 20ul-Größen enthalten 0.1% BSA

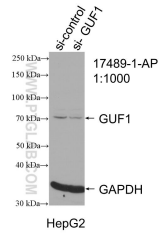
For technical support and original validation data for this product please contact:

T: 1 (888) 4PTGLAB (1-888-478-4522) (toll free in USA), or 1(312) 455-8498 (outside USA)

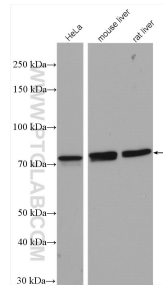
E: proteintech@ptglab.com
W: ptglab.com

This product is exclusively available under Proteintech Group brand and is not available to purchase from any other manufacturer.

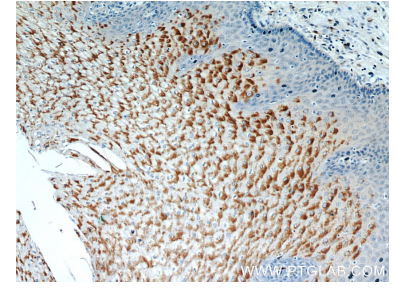
Ausgewählte Validierungsdaten



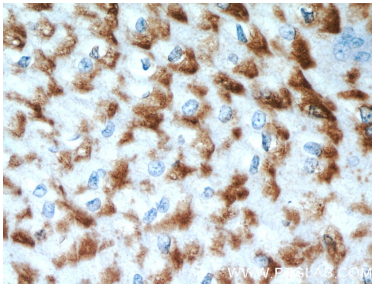
WB result of GUF1 antibody (17489-1-AP; 1:1000; incubated at room temperature for 1.5 hours) with sh-Control and sh-GUF1 transfected HepG2 cells.



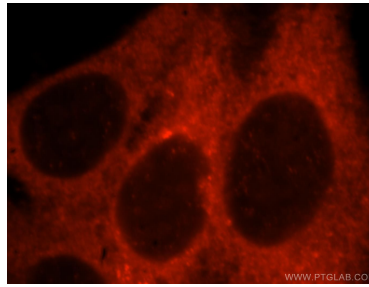
Various lysates were subjected to SDS PAGE followed by western blot with 17489-1-AP (GUF1 antibody) at dilution of 1:2000 incubated at room temperature for 1.5 hours.



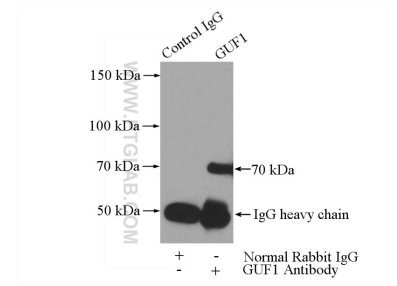
Immunohistochemical analysis of paraffin-embedded human oesophagus using 17489-1-AP (GUF1 antibody) at dilution of 1:50 (under 10x lens).



Immunohistochemical analysis of paraffin-embedded human oesophagus using 17489-1-AP (GUF1 antibody) at dilution of 1:50 (under 40x lens).



Immunofluorescent analysis of HepG2 cells, using GUF1 antibody 17489-1-AP at 1:25 dilution and Rhodamine-labeled goat anti-rabbit IgG (red).



IP Result of anti-GUF1 (IP:17489-1-AP, 3ug; Detection:17489-1-AP 1:500) with HeLa cells lysate 3200ug.