

Allgemeine Informationen

Katalog-Nr.: 17490-1-AP	GenBank-Zugangsnummer: BC038857	Reinigungsmethode: Antigen-Affinitätsreinigung
Größe: 150ul, Konzentration: 750 µg/ml von Nanodrop;	GeneID (NCBI): 4133	Empfohlene Verdünnungen: WB 1:5000-1:50000
Wirt: Kaninchen	Vollständiger Name: microtubule-associated protein 2	IP 0.5-4.0 µg für IP und 1:500-1:2000 für WB
Isotyp: IgG	Berechnete Masse: 200 kDa	IHC 1:2500-1:10000
Immunogen Katalognummer: AG11580	Beobachtete Masse: 280 kDa, 70-85 kDa	IF 1:50-1:500

Anwendungen

Geprüfte Anwendungen:
FC, IF, IHC, IP, WB, ELISA

In Publikationen genannte Anwendungen:
FC, IF, IHC, WB

Getestete Reaktivität:
Human, Maus, Ratte

Zitierte Arten:
Human, Maus, Ratte, Ziege

Hinweis-IHC: Antigenmaskierung mit TE-Puffer pH 9,0 empfohlen. (*) Wahlweise kann die Antigenmaskierung auch mit Citratpuffer pH 6,0 erfolgen.

Positivkontrollen:

WB: SH-SY5Y-Zellen, Maushirngewebe, Rattenhirngewebe

IP: Maushirngewebe,

IHC: Maushirngewebe, humanes Gliomgewebe, humanes Hirngewebe, Maus-Cerebellum-Gewebe, Rattenhirngewebe

IF: Rattenhirngewebe, iPS-Zellen, Maushirngewebe

Hintergrundinformationen

MAP2 (microtubule-associated protein 2) is a cytoskeleton protein abundant in brain and has important role in neuronal morphogenesis. Multiple high MW and low MW MAP2 isoforms are expressed within proximal segment of axons, dendrites, and cell bodies. The expression of MAP2 is regulated in both a tissue- and developmentally specific manner. The 280 kDa MAP2B is present throughout rat brain development, and the slightly larger MAP2A appears first during the end of the second week of postnatal life. MAP2C, composed of several bands of about 70 kDa, is present during early brain development, and largely disappears from the mature brain except for the retina, olfactory bulb, and cerebellum. In addition, some isoforms with lower MW around 50-60 kDa also exist. MAP2 antibodies have been widely used to mark the neuron or dendrite formation. This antibody can recognize both high MW and low MW isoforms of MAP2.

Bemerkenswerte Veröffentlichungen

Verfasser	Pubmed ID	Journal	Anwendung
Ji-Qiang Fu	30264483	CNS Neurosci Ther	IF
Minghao Yao	31355388	Biomater Sci	WB
Anand Ramani	32876341	EMBO J	IF

Lagerung

Lagerungsbedingungen:

Bei -20°C lagern. Nach dem Versand ein Jahr lang stabil

Lagerungspuffer:

PBS mit 0.02% Natriumazid und 50% Glycerin pH 7.3.

Aliquotieren ist nicht notwendig bei -20°C Lagerung

***** 20ul-Größen enthalten 0.1% BSA**

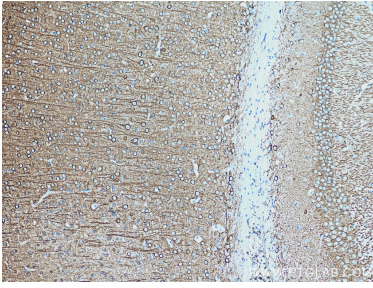
For technical support and original validation data for this product please contact:

T: 1 (888) 4PTGLAB (1-888-478-4522) (toll free in USA), or 1(312) 455-8498 (outside USA)

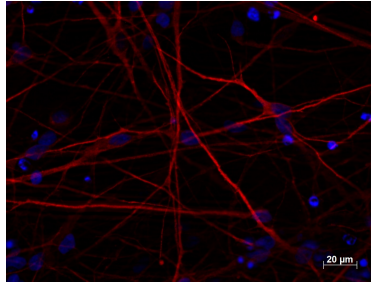
E: proteintech@ptglab.com
W: ptglab.com

This product is exclusively available under Proteintech Group brand and is not available to purchase from any other manufacturer.

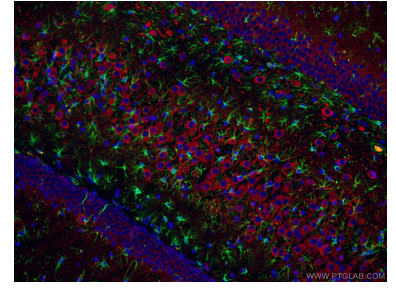
Ausgewählte Validierungsdaten



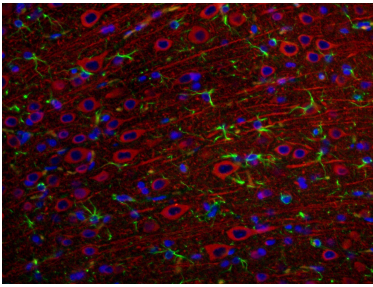
Immunohistochemical analysis of paraffin-embedded mouse brain tissue slide using 17490-1-AP (MAP2 antibody) at dilution of 1:5000 (under 10x lens). Heat mediated antigen retrieval with Tris-EDTA buffer (pH 9.0).



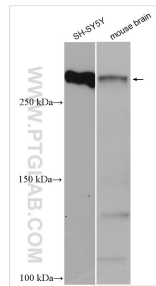
Immunofluorescent staining of MAP2 (17490-1-AP, 1:250 dilution) with 4% PFA fixed control hiPSC derived neuronal cultures (35 days old). (RED MAP2; Blue: DAPI). Provided by BioTalentum Ltd., Hungary.



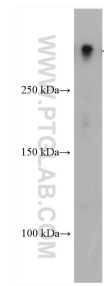
Immunofluorescent analysis of (4% PFA) fixed rat brain tissue using 17490-1-AP (MAP2 antibody) at dilution of 1:100 and CoraLite594-Conjugated AffiniPure Goat Anti-Rabbit IgG(H+L). The section was co-stained with 60190-1-Ig (GFAP antibody, green).



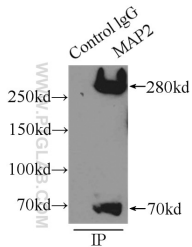
Immunofluorescent analysis of (4% PFA) fixed rat brain tissue using 17490-1-AP (MAP2 antibody) at dilution of 1:100 and CoraLite594-Conjugated AffiniPure Goat Anti-Rabbit IgG(H+L). The section was co-stained with 60190-1-Ig (GFAP antibody, green).



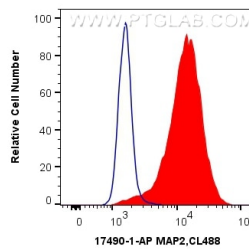
Various lysates were subjected to SDS PAGE followed by western blot with 17490-1-AP (MAP2 antibody) at dilution of 1:30000 incubated at room temperature for 1.5 hours.



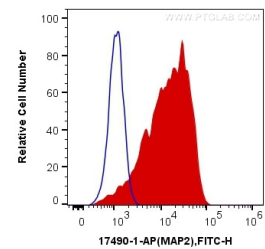
rat brain tissue were subjected to SDS PAGE followed by western blot with 17490-1-AP (MAP2 antibody) at dilution of 1:30000 incubated at room temperature for 1.5 hours.



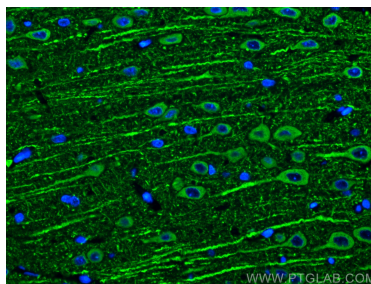
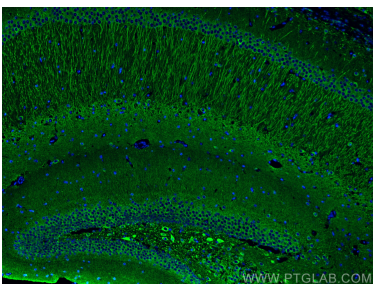
IP Result of anti-MAP2 (IP:17490-1-AP, 3ug; Detection:17490-1-AP 1:1000) with mouse brain tissue lysate 5000ug.



1×10^6 Neuro-2a cells were intracellularly stained with 0.4 ug Anti-Human MAP2 (17490-1-AP) and CoraLite®488-Conjugated AffiniPure Goat Anti-Rabbit IgG(H+L) at dilution 1:1000 (red), or 0.4 ug Control Antibody. Cells were fixed with 4% PFA and permeabilized with Flow Cytometry Perm Buffer (PF00011-C).



1×10^6 SH-SY5Y cells were intracellularly stained with 0.2 ug Anti-Human MAP2 (17490-1-AP) and CoraLite®488-Conjugated AffiniPure Goat Anti-Rabbit IgG(H+L) at dilution 1:1000 (red), or 0.2 ug Control Antibody. Cells were fixed with 4% PFA and permeabilized with 0.1% TritonX-100.



Immunofluorescent analysis of (4% PFA) fixed mouse brain tissue using MAP2 antibody (17490-1-AP) at dilution of 1:200 and CoraLite®488-Conjugated AffiniPure Goat Anti-Rabbit IgG(H+L).

Immunofluorescent analysis of (4% PFA) fixed rat brain tissue using MAP2 antibody (17490-1-AP) at dilution of 1:200 and CoraLite®488-Conjugated AffiniPure Goat Anti-Rabbit IgG(H+L).