

Allgemeine Informationen

Katalog-Nr.:
17509-1-AP

Größe:
150ul, Konzentration: 500 µg/ml von
Nanodrop und 300 µg/ml durch die
Bradford-Methode mit BSA als
Standard;

Wirt:
Kaninchen

Isotyp:
IgG

Immunogen Katalognummer:
AG11714

GenBank-Zugangsnummer:
BC053895

GeneID (NCBI):
3667

Vollständiger Name:
insulin receptor substrate 1

Berechnete Masse:
1242 aa, 132 kDa

Beobachtete Masse:
160-185 kDa

Reinigungsmethode:

Antigen-Affinitätsreinigung

Empfohlene Verdünnungen:

WB 1:500-1:2000
IP 0.5-4.0 µg für IP und 1:500-1:2000
für WB
IHC 1:20-1:200
IF 1:20-1:200

Anwendungen

Geprüfte Anwendungen:

IF, IHC, IP, WB, ELISA

In Publikationen genannte Anwendungen:

Dot blot, IF, IHC, WB

Getestete Reaktivität:

Human

Zitierte Arten:

Hausschwein, Human, Maus, Ratte,
Riesenscheibenbrasse (Megalobrama Amblycephala)

**Hinweis-IHC: Antigendemaskierung mit TE-
Puffer pH 9,0 empfohlen. (*) Wahlweise
kann die Antigendemaskierung auch mit
Citratpuffer pH 6,0 erfolgen.**

Positivkontrollen:

WB : A549-Zellen, A431-Zellen, HEK-293-Zellen, PC-3-
Zellen

IP : A549-Zellen,

IHC : humanes Mammakarzinomgewebe, humanes
Lebergewebe

IF : A549-Zellen,

Hintergrundinformationen

Ins receptor substrate 1 (IRS1) was the first cloned and characterized member of the IRS family which are involved in ins receptor (IR) and ins-like growth factor I receptor (IGF-IR) signaling. IRS1 is phosphorylated by ins receptor tyrosine kinase and is involved in various cellular processes including DNA repair fidelity, transcriptional activity, and cell growth can support tumor development and progression. Mutations in this gene are associated with type II diabetes and susceptibility to ins resistance. IRS1 has a predicted molecular weight of 132 kDa, however, as a result of its extensive serine phosphorylation it separates on a SDS gel as a band of approximately 160-185 kDa.

Bemerkenswerte Veröffentlichungen

Verfasser	Pubmed ID	Journal	Anwendung
Yang Liu	36149580	Cell Stress Chaperones	WB
Hiroshi Senoo	34551282	Mol Cell	WB
Takashi Hara	36130217	Biosci Biotechnol Biochem	WB

Lagerung

Lagerungsbedingungen:

Bei -20°C lagern. Nach dem Versand ein Jahr lang stabil

Lagerungspuffer:

PBS mit 0.02% Natriumazid und 50% Glycerin pH 7.3.

Aliquotieren ist nicht notwendig bei -20°C Lagerung

***** 20ul-Größen enthalten 0.1% BSA**

For technical support and original validation data for this product please contact:

T: 1 (888) 4PTGLAB (1-888-478-4522) (toll free
in USA), or 1(312) 455-8498 (outside USA)

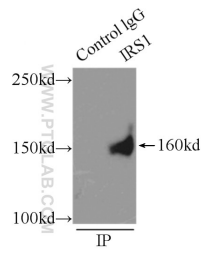
E: proteintech@ptglab.com
W: ptglab.com

**This product is exclusively available under Proteintech
Group brand and is not available to purchase from any
other manufacturer.**

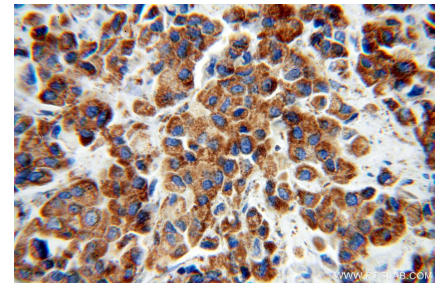
Ausgewählte Validierungsdaten



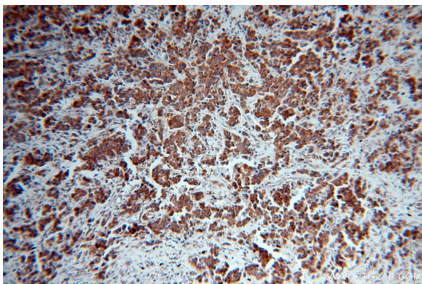
A549 cells were subjected to SDS PAGE followed by western blot with 17509-1-AP (IRS1 antibody) at dilution of 1:400 incubated at room temperature for 1.5 hours.



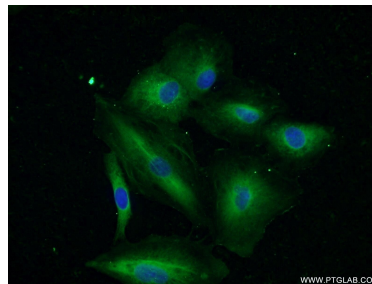
IP Result of anti-IRS1 (IP:17509-1-AP, 5ug; Detection:17509-1-AP 1:1000) with A549 cells lysate 3500ug.



Immunohistochemical analysis of paraffin-embedded human breast cancer using 17509-1-AP (IRS1 antibody) at dilution of 1:100 (under 40x lens).



Immunohistochemical analysis of paraffin-embedded human breast cancer using 17509-1-AP (IRS1 antibody) at dilution of 1:100 (under 10x lens).



Immunofluorescent analysis of A549 cells using 17509-1-AP (IRS1 antibody) at dilution of 1:50 and Alexa Fluor 488-conjugated AffiniPure Goat Anti-Rabbit IgG(H+L).