

Nur für Forschungszwecke

Somatostatin (64-81aa) Polyklonaler Antikörper



Katalog-Nr.:17512-1-AP

2 Publikationen

Allgemeine Informationen

Katalog-Nr.: 17512-1-AP	GenBank-Zugangsnummer: NM_001048	Reinigungsmethode: Antigen-Affinitätsreinigung
Größe: 150ul , Konzentration: 350 µg/ml von Nanodrop;	GeneID (NCBI): 6750	Empfohlene Verdünnungen: IHC 1:6400-1:25600 IF 1:50-1:500
Wirt: Kaninchen	Vollständiger Name: somatostatin	
Isotyp: IgG	Berechnete Masse: 13 kDa	

Anwendungen

Geprüfte Anwendungen:

IF, IHC, ELISA

In Publikationen genannte Anwendungen:

IF

Getestete Reaktivität:

Human, Maus

Zitierte Arten:

Ratte

Hinweis-IHC: Antigendemaskierung mit TE-Puffer pH 9,0 empfohlen. (*) Wahlweise kann die Antigendemaskierung auch mit Citratpuffer pH 6,0 erfolgen.

Positivkontrollen:

IHC : Maus-Pankreasgewebe, humanes Pankreaskarzinomgewebe, Maushirngewebe

IF : humanes Pankreasgewebe, Maushirngewebe, Maus-Pankreasgewebe

Hintergrundinformationen

Somatostatin is a peptide hormone that regulates the endocrine system and affects neurotransmission and cell proliferation via interaction with G protein-coupled somatostatin receptors and inhibition of the release of numerous secondary hormones. Somatostatin is a useful marker of D-cells of pancreatic islet cells. Somatostatin inhibits ins and glucagon secretion. Somatostatin has two active forms produced by alternative cleavage of a single preproprotein: one of 14 amino acids, the other of 28 amino acids. This antibody can recognize the full length and propeptide of Somatostatin.

Bemerkenswerte Veröffentlichungen

Verfasser	Pubmed ID	Journal	Anwendung
Xiaoyi Zhang	34556631	Cell Death Dis	IF
Fei Han	31440379	Aging Dis	IF

Lagerung

Lagerungsbedingungen:

Bei -20°C lagern. Nach dem Versand ein Jahr lang stabil

Lagerungspuffer:

PBS mit 0.02% Natriumazid und 50% Glycerin pH 7.3.

Aliquotieren ist nicht notwendig bei -20°C Lagerung

*** 20ul-Größen enthalten 0.1% BSA

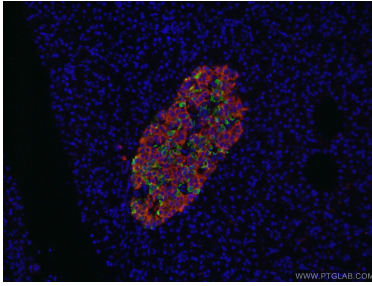
For technical support and original validation data for this product please contact:

T: 1 (888) 4PTGLAB (1-888-478-4522) (toll free in USA), or 1(312) 455-8498 (outside USA)

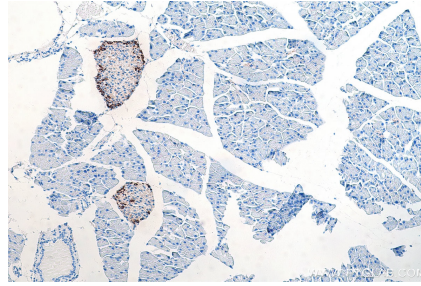
E: proteintech@ptglab.com
W: ptglab.com

This product is exclusively available under Proteintech Group brand and is not available to purchase from any other manufacturer.

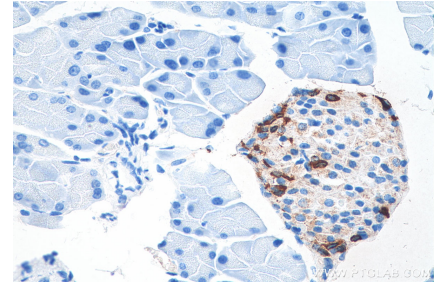
Ausgewählte Validierungsdaten



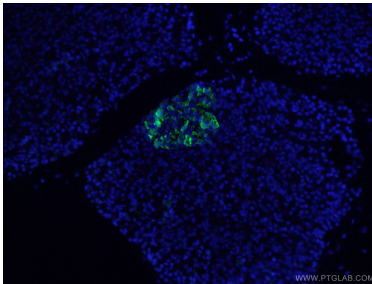
Immunofluorescent analysis of (4% PFA) fixed human pancreas tissue using 17512-1-AP Somatostatin-Specific antibody (green) and 66198-1-Ig Insulin antibody (red) at dilution of 1:50 and CoraLite488-Conjugated AffiniPure Goat Anti-Rabbit IgG(H+L).



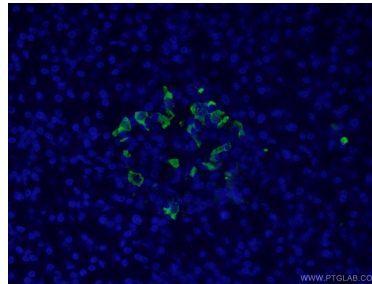
Immunohistochemical analysis of paraffin-embedded mouse pancreas tissue slide using 17512-1-AP (Somatostatin (64-81aa) antibody) at dilution of 1:12800 (under 10x lens). Heat mediated antigen retrieval with Tris-EDTA buffer (pH 9.0).



Immunohistochemical analysis of paraffin-embedded mouse pancreas tissue slide using 17512-1-AP (Somatostatin (64-81aa) antibody) at dilution of 1:12800 (under 40x lens). Heat mediated antigen retrieval with Tris-EDTA buffer (pH 9.0).



Immunofluorescent analysis of (4% PFA) fixed human pancreas tissue using 17512-1-AP (Somatostatin-Specific antibody) at dilution of 1:200 and Alexa Fluor 488-Conjugated AffiniPure Goat Anti-Rabbit IgG(H+L).



Immunofluorescent analysis of (4% PFA) fixed human pancreas tissue using 17512-1-AP (Somatostatin-Specific antibody) at dilution of 1:200 and Alexa Fluor 488-Conjugated AffiniPure Goat Anti-Rabbit IgG(H+L).