

Nur für Forschungszwecke

# Cytokeratin 17-Specific Polyklonaler Antikörper



Katalog-Nr.:17516-1-AP

Vorgestelltes Produkt

17 Publikationen

## Allgemeine Informationen

Katalog-Nr.:

17516-1-AP

Größe:

150ul, Konzentration: 400 µg/ml von Nanodrop;

Wirt:

Kaninchen

Isotyp:

IgG

GenBank-Zugangsnummer:

NM\_000422

GeneID (NCBI):

3872

Vollständiger Name:

keratin 17

Berechnete Masse:

48 kDa

Beobachtete Masse:

48 kDa

Reinigungsmethode:

Antigen-Affinitätsreinigung

Empfohlene Verdünnungen:

WB 1:500-1:2000

IP 0.5-4.0 µg für IP und 1:500-1:2000

für WB

IHC 1:50-1:500

IF 1:300-1:1200

## Anwendungen

Geprüfte Anwendungen:

FC, IF, IHC, IP, WB, ELISA

In Publikationen genannte Anwendungen:

ColP, IF, IHC, WB

Getestete Reaktivität:

Human, Maus

Zitierte Arten:

Human, Maus

Positivkontrollen:

WB : A431-Zellen, HEK-293-Zellen, HeLa-Zellen, Mauhautgewebe

IP : A431-Zellen,

IHC : humanes Zervixkarzinomgewebe, humanes Lungenkarzinomgewebe

IF : HepG2-Zellen, HeLa-Zellen

**Hinweis-IHC: Antigendemaskierung mit TE-Puffer pH 9,0 empfohlen. (\*) Wahlweise kann die Antigendemaskierung auch mit Citratpuffer pH 6,0 erfolgen.**

## Hintergrundinformationen

Keratins are a large family of proteins that form the intermediate filament cytoskeleton of epithelial cells, which are classified into two major sequence types. Type I keratins are a group of acidic intermediate filament proteins, including K9-K23, and the hair keratins Ha1-Ha8. Type II keratins are the basic or neutral counterparts to the acidic type I keratins, including K1-K8, and the hair keratins, Hb1-Hb6. Keratin 17 is a type I cytokeratin. It is found in nail beds, hair follicles, sebaceous glands, and other epidermal appendages. It is used as a marker for trauma. This antibody is specifically against KRT17.

## Bemerkenswerte Veröffentlichungen

Verfasser	Pubmed ID	Journal	Anwendung
Mengjie Li	34845376	Oncogene	WB
Shidi Wu	31790685	Life Sci	WB
Xiaoqiu Zhou	30655849	Oncol Lett	IHC

## Lagerung

Lagerungsbedingungen:

Bei -20°C lagern. Nach dem Versand ein Jahr lang stabil

Lagerungspuffer:

PBS mit 0.02% Natriumazid und 50% Glycerin pH 7.3.

Aliquotieren ist nicht notwendig bei -20°C Lagerung

\*\*\* 20ul-Größen enthalten 0.1% BSA

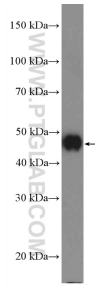
For technical support and original validation data for this product please contact:

T: 1 (888) 4PTGLAB (1-888-478-4522) (toll free in USA), or 1(312) 455-8498 (outside USA)

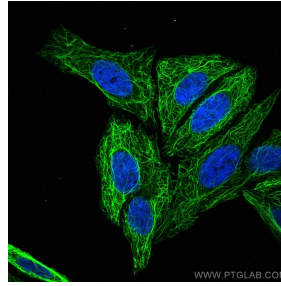
E: proteintech@ptglab.com  
W: ptglab.com

This product is exclusively available under Proteintech Group brand and is not available to purchase from any other manufacturer.

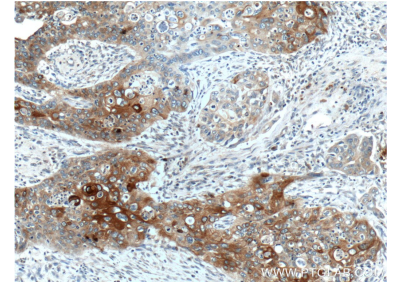
## Ausgewählte Validierungsdaten



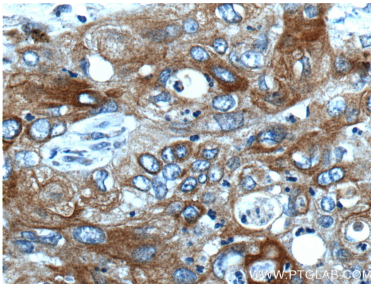
A431 cells were subjected to SDS PAGE followed by western blot with 17516-1-AP (Cytokeratin 17-Specific antibody at dilution of 1:1000 incubated at room temperature for 1.5 hours.



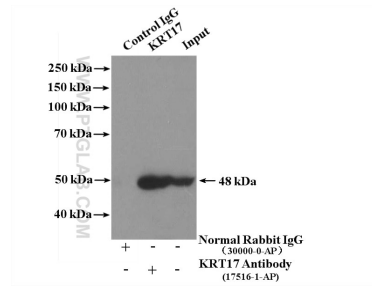
Immunofluorescent analysis of (-20°C Methanol) fixed HepG2 cells using Cytokeratin 17-Specific antibody (17516-1-AP) at dilution of 1:600 and CoraLite®488-Conjugated AffiniPure Goat Anti-Rabbit IgG(H+L).



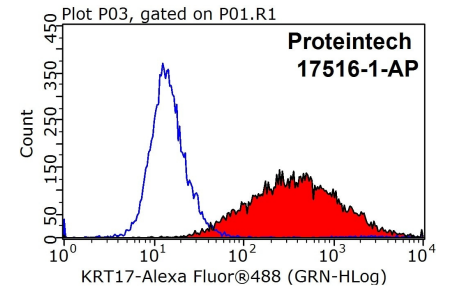
Immunohistochemical analysis of paraffin-embedded human cervical cancer tissue slide using 17516-1-AP (Cytokeratin 17-Specific antibody at dilution of 1:200 (under 10x lens).



Immunohistochemical analysis of paraffin-embedded human cervical cancer tissue slide using 17516-1-AP (Cytokeratin 17-Specific antibody at dilution of 1:200 (under 40x lens).



IP Result of anti-Cytokeratin 17-Specific (IP:17516-1-AP, 4ug; Detection:17516-1-AP 1:1000) with A431 cells lysate 1200ug.



1X10<sup>6</sup> HeLa cells were stained with 0.2ug Cytokeratin 17-Specific antibody (17516-1-AP, red) and control antibody (blue). Fixed with 90% MeOH blocked with 3% BSA (30 min). Alexa Fluor 488-conjugated AffiniPure Goat Anti-Rabbit IgG(H+L) with dilution 1:1000.