

ACTA1-Specific Polyklonaler Antikörper

Katalog-Nr.:17521-1-AP

9 Publikationen

Allgemeine Informationen

Katalog-Nr.: 17521-1-AP	GenBank-Zugangsnummer: NM_001100	Reinigungsmethode: Antigen-Affinitätsreinigung
Größe: 150ul , Konzentration: 260 µg/ml von Nanodrop;	GeneID (NCBI): 58	Empfohlene Verdünnungen: WB 1:500-1:2000 IHC 1:50-1:500
Wirt: Kaninchen	Vollständiger Name: actin, alpha 1, skeletal muscle	
Isotyp: IgG	Berechnete Masse: 42 kDa	
	Beobachtete Masse: 39-42 kDa	

Anwendungen

Geprüfte Anwendungen: FC, IHC, WB, ELISA	Positivkontrollen:
In Publikationen genannte Anwendungen: IF, WB	WB : humanes Skelettmuskelgewebe, Maus-Skelettmuskelgewebe, Ratten-Skelettmuskelgewebe
Getestete Reaktivität: Human, Maus, Ratte	IHC : humanes Skelettmuskelgewebe, humanes Uterusmyomgewebe
Zitierte Arten: Human, Maus, Ratte	
Hinweis-IHC: Antigendemaskierung mit TE-Puffer pH 9,0 empfohlen. (*) Wahlweise kann die Antigendemaskierung auch mit Citratpuffer pH 6,0 erfolgen.	

Hintergrundinformationen

Actins are highly conserved proteins that are involved in various types of cell motility and are ubiquitously expressed in all eukaryotic cells. The ACTA1 gene encodes skeletal muscle alpha-actin, the principal actin isoform in adult skeletal muscle, which interacts with a variety of proteins to produce the force for muscle contraction. There is only the N-terminal 8 amino acids difference among the actin family members. This antibody is specific to the ACTA1. It does not cross-react with other actin isoforms.

Bemerkenswerte Veröffentlichungen

Verfasser	Pubmed ID	Journal	Anwendung
Hongyi Zhou	34502418	Int J Mol Sci	WB
Qing Wang	34786834	J Cell Mol Med	WB
Yongqiang Ai	34149411	Front Pharmacol	WB

Lagerung

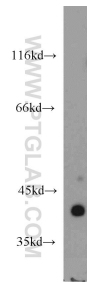
Lagerungsbedingungen:
Bei -20°C lagern. Nach dem Versand ein Jahr lang stabil
Lagerungspuffer:
PBS mit 0.02% Natriumazid und 50% Glycerin pH 7.3.
Aliquotieren ist nicht notwendig bei -20°C Lagerung

*** 20ul-Größen enthalten 0.1% BSA

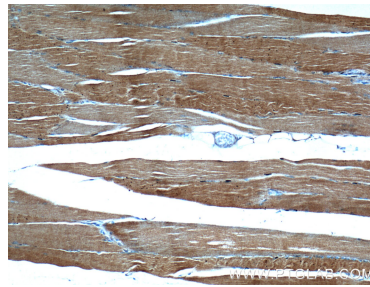
For technical support and original validation data for this product please contact:
T: 1 (888) 4PTGLAB (1-888-478-4522) (toll free in USA), or 1(312) 455-8498 (outside USA)
E: proteintech@ptglab.com
W: ptglab.com

This product is exclusively available under Proteintech Group brand and is not available to purchase from any other manufacturer.

Ausgewählte Validierungsdaten



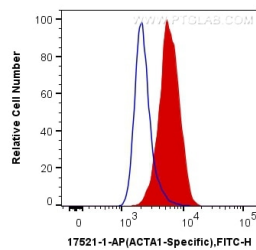
human skeletal muscle tissue were subjected to SDS PAGE followed by western blot with 17521-1-AP (ACTA1-Specific antibody) at dilution of 1:1000 incubated at room temperature for 1.5 hours.



Immunohistochemical analysis of paraffin-embedded human skeletal muscle tissue slide using 17521-1-AP (ACTA1-Specific Antibody) at dilution of 1:500 (under 10x lens).



Immunohistochemical analysis of paraffin-embedded human skeletal muscle tissue slide using 17521-1-AP (ACTA1-Specific Antibody) at dilution of 1:500 (under 40x lens).



1X10⁶ C2C12 cells were intracellularly stained with 0.4 ug Anti-Human ACTA1-Specific (17521-1-AP) and CoraLite®488-Conjugated AffiniPure Goat Anti-Rabbit IgG(H+L) at dilution 1:1000 (red), or 0.4 ug Control Antibody. Cells were fixed with 4% PFA and permeabilized with Flow Cytometry Perm Buffer (PF00011-C).