

Nur für Forschungszwecke

Inhibin beta A-Specific Polyklonaler Antikörper



Katalog-Nr.: 17524-1-AP

Allgemeine Informationen

Katalog-Nr.:
17524-1-AP

Größe:
150ul, Konzentration: 400 µg/ml von
Nanodrop und 133 µg/ml durch die
Bradford-Methode mit BSA als
Standard;

Wirt:
Kaninchen

Isotyp:
IgG

GenBank-Zugangsnummer:
NM_002192

GeneID (NCBI):
3624

Vollständiger Name:
inhibin, beta A

Berechnete Masse:
47 kDa

Beobachtete Masse:
47 kDa

Reinigungsmethode:
Antigen-Affinitätsreinigung

Empfohlene Verdünnungen:
WB 1:500-1:1000
IP 0.5-4.0 µg für IP und 1:500-1:1000
für WB

Anwendungen

Geprüfte Anwendungen:
IP, WB, ELISA

Getestete Reaktivität:
Human, Maus, Ratte

Positivkontrollen:

WB: Maushirngewebe, PC-3-Zellen, Rattenhirngewebe

IP: Rattenhirngewebe,

Hintergrundinformationen

Inhibin β A (INHBA) is a ligand in the transforming growth factor β (TGF- β) superfamily. Inhibin β A forms a disulfide-linked homo-dimer known as activin A, which has been implicated in multiple biologic processes, including neoplastic progression. The inhibin β A can also bind the β B and α isoforms to form activin AB and inhibin, respectively.

Lagerung

Lagerungsbedingungen:

Bei -20°C lagern. Nach dem Versand ein Jahr lang stabil

Lagerungspuffer:

PBS mit 0.02% Natriumazid und 50% Glycerin pH 7.3.

Aliquotieren ist nicht notwendig bei -20°C Lagerung

*** 20ul-Größen enthalten 0.1% BSA

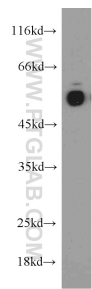
For technical support and original validation data for this product please contact:

T: 1 (888) 4PTGLAB (1-888-478-4522) (toll free
in USA), or 1(312) 455-8498 (outside USA)

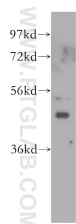
E: proteintech@ptglab.com
W: ptglab.com

This product is exclusively available under Proteintech Group brand and is not available to purchase from any other manufacturer.

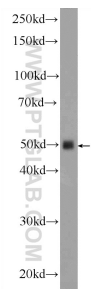
Ausgewählte Validierungsdaten



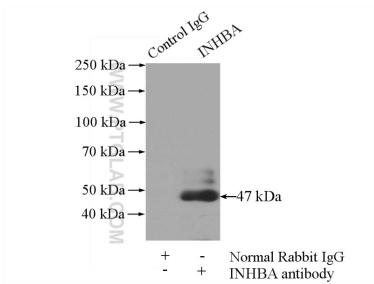
rat brain tissue were subjected to SDS PAGE followed by western blot with 17524-1-AP (Inhibin beta A-Specific antibody) at dilution of 1:300 incubated at room temperature for 1.5 hours.



PC-3 cells were subjected to SDS PAGE followed by western blot with 17524-1-AP (Inhibin beta A-Specific antibody) at dilution of 1:300 incubated at room temperature for 1.5 hours.



mouse brain tissue were subjected to SDS PAGE followed by western blot with 17524-1-AP (Inhibin beta A-Specific antibody) at dilution of 1:600 incubated at room temperature for 1.5 hours.



IP Result of anti-Inhibin beta A-Specific (IP:17524-1-AP, 4ug; Detection:17524-1-AP 1:500) with rat brain tissue lysate 4000ug.