

Nur für Forschungszwecke

# CD146/MCAM Polyklonaler Antikörper



Katalog-Nr.:17564-1-AP

Vorgestelltes Produkt

21 Publikationen

## Allgemeine Informationen

Katalog-Nr.:  
17564-1-AP

Größe:  
150ul, Konzentration: 550 µg/ml von  
Nanodrop;

Wirt:  
Kaninchen

Isotyp:  
IgG

Immunogen Katalognummer:  
AG11762

GenBank-Zugangsnummer:  
BC056418

GeneID (NCBI):  
4162

Vollständiger Name:  
melanoma cell adhesion molecule

Berechnete Masse:  
646 aa, 72 kDa

Beobachtete Masse:  
113-120 kDa

Reinigungsmethode:

Antigen-Affinitätsreinigung

Empfohlene Verdünnungen:

WB 1:2000-1:10000

IP 0.5-4.0 µg für IP und 1:500-1:3000  
für WB

IHC 1:200-1:600

IF 1:50-1:500

## Anwendungen

Geprüfte Anwendungen:  
FC, IF, IHC, IP, WB, ELISA

In Publikationen genannte Anwendungen:  
FC, IF, IHC, IP, WB

Getestete Reaktivität:  
Human, Maus, Ratte

Zitierte Arten:  
Human, Maus, Ratte

**Hinweis-IHC: Antigendemaskierung mit TE-Puffer pH 9,0 empfohlen. (\*) Wahlweise kann die Antigendemaskierung auch mit Citratpuffer pH 6,0 erfolgen.**

Positivkontrollen:

WB: HeLa-Zellen, A375-Zellen, HepG2-Zellen, Mauslungengewebe

IP: HeLa-Zellen, HepG2-Zellen

IHC: humanes Ovarialkarzinomgewebe, humanes Herzgewebe, humanes Hirngewebe, humanes Hodengewebe, humanes Lungengewebe, humanes Milzgewebe, humanes Nierengewebe, humanes Plazenta-Gewebe

IF: HUVEC-Zellen, HeLa-Zellen

## Hintergrundinformationen

CD146, also known as melanoma cell adhesion molecule (MCAM) or MUC18, originally identified as a biomarker of melanoma progression, is a transmembrane glycoprotein of 113-130 kDa, belonging to the immunoglobulin (Ig) superfamily (PMID: 8378324; 25993332). Structurally, it consists of five Ig domains, a transmembrane domain, and a cytoplasmic region. In normal adult tissue, CD146 is primarily expressed by vascular endothelium and smooth muscle. CD146 is a key cell adhesion protein in vascular endothelial cell activity and angiogenesis, and has been used as marker of circulating endothelium cells (CECs) (PMID: 19356677). In addition to the membrane-anchored form of CD146, a soluble form of CD146 (sCD146, 105 kDa) has also been found in human plasma and in the supernatant of cultured human endothelial cells (PMID: 9462829; 19229070; 16374253; 14597988).

## Bemerkenswerte Veröffentlichungen

Verfasser	Pubmed ID	Journal	Anwendung
Peter Genovese	34551191	J Tissue Eng Regen Med	WB, IHC
Hao Zhang	36093059	iScience	WB, IHC, IF
Zuping Wu	36068594	Stem Cell Res Ther	FC

## Lagerung

Lagerungsbedingungen:

Bei -20°C lagern. Nach dem Versand ein Jahr lang stabil

Lagerungspuffer:

PBS mit 0.02% Natriumazid und 50% Glycerin pH 7.3.

Aliquotieren ist nicht notwendig bei -20°C Lagerung

\*\*\* 20ul-Größen enthalten 0.1% BSA

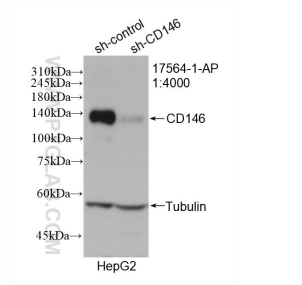
For technical support and original validation data for this product please contact:

T: 1 (888) 4PTGLAB (1-888-478-4522) (toll free in USA), or 1(312) 455-8498 (outside USA)

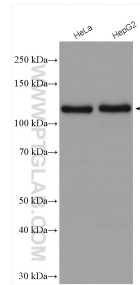
E: proteintech@ptglab.com  
W: ptglab.com

This product is exclusively available under Proteintech Group brand and is not available to purchase from any other manufacturer.

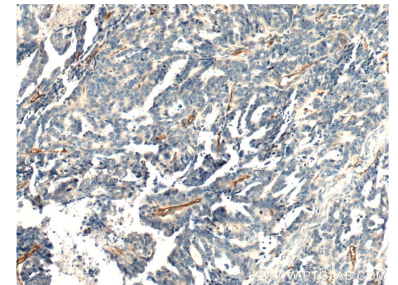
## Ausgewählte Validierungsdaten



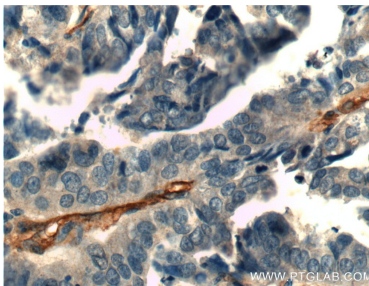
WB result of CD146/MCAM antibody (17564-1-AP; 1:4000; incubated at room temperature for 1.5 hours) with sh-Control and sh-CD146/MCAM transfected HepG2 cells.



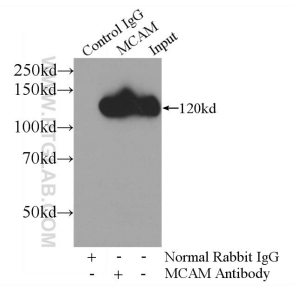
Various lysates were subjected to SDS PAGE followed by western blot with 17564-1-AP (CD146/MCAM antibody) at dilution of 1:5000 incubated at room temperature for 1.5 hours.



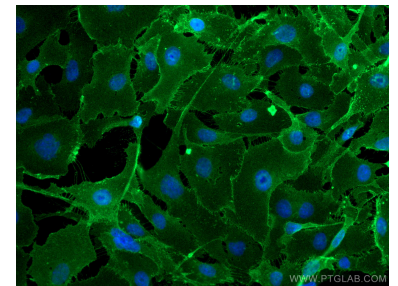
Immunohistochemical analysis of paraffin-embedded human ovary tumor tissue slide using 17564-1-AP (CD146/MCAM antibody at dilution of 1:600 (under 10x lens).



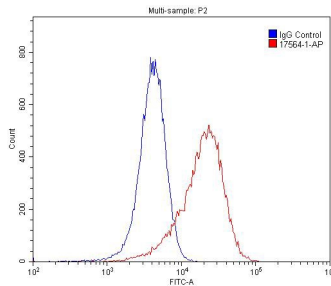
Immunohistochemical analysis of paraffin-embedded human ovary tumor tissue slide using 17564-1-AP (CD146/MCAM antibody at dilution of 1:600 (under 40x lens).



IP Result of anti-CD146/MCAM (IP:17564-1-AP, 4ug; Detection:17564-1-AP 1:1500) with HeLa cells lysate 4000ug.



Immunofluorescent analysis of (4% PFA) fixed HUVEC cells using CD146/MCAM antibody (17564-1-AP) at dilution of 1:200 and CoraLite@488-Conjugated AffiniPure Goat Anti-Rabbit IgG(H+L).



1x10<sup>6</sup> HUVEC cells were stained with 0.2ug CD146/MCAM antibody (17564-1-AP, red) and control antibody (blue). Fixed with 4% PFA blocked with 3% BSA (30 min). Alexa Fluor 488-conjugated AffiniPure Goat Anti-Rabbit IgG(H+L) with dilution 1:1500.