

## Allgemeine Informationen

|   |  |  |
|---|--|--|
| <b>Katalog-Nr.:</b><br>17565-1-AP                               | <b>GenBank-Zugangsnummer:</b><br>BC058926  | <b>Reinigungsmethode:</b><br>Antigen-Affinitätsreinigung                                 |
| <b>Größe:</b><br>150ul , Konzentration: 600 µg/ml von Nanodrop; | <b>GeneID (NCBI):</b><br>1499  | <b>Empfohlene Verdünnungen:</b><br>WB 1:2000-1:16000<br>IHC 1:50-1:500<br>IF 1:200-1:800 |
| <b>Wirt:</b><br>Kaninchen                                       | <b>Vollständiger Name:</b><br>catenin (cadherin-associated protein), beta 1, 88kDa |  |
| <b>Isotyp:</b><br>IgG   | <b>Berechnete Masse:</b><br>781 aa, 86 kDa   |  |
| <b>Immunogen Katalognummer:</b><br>AG11763                      | <b>Beobachtete Masse:</b><br>92 kDa  |  |

## Anwendungen

### Geprüfte Anwendungen:

IF, IHC, WB, ELISA

### In Publikationen genannte Anwendungen:

CoIP, IF, IHC, IP, WB

### Getestete Reaktivität:

Human, Maus, Ratte

### Zitierte Arten:

Human, Maus, Ratte

**Hinweis-IHC: Antigenmaskierung mit TE-Puffer pH 9,0 empfohlen. (\*) Wahlweise kann die Antigenmaskierung auch mit Citratpuffer pH 6,0 erfolgen.**

### Positivkontrollen:

**WB** : HEK-293-Zellen, A431-Zellen, C6-Zellen, HeLa-Zellen, Maushirngewebe, Mauslebergewebe, MCF-7-Zellen, NIH/3T3-Zellen, Rattenhirngewebe, Rattenlebergewebe

**IHC** : humanes Leberkarzinomgewebe, humanes Mammakarzinomgewebe

**IF** : MCF-7-Zellen, T-47D-Zellen

## Hintergrundinformationen

β-Catenin, also known as CTNNB1, is an evolutionarily conserved, multifunctional intracellular protein. β-Catenin was originally identified in cell adherens junctions (AJs) where it functions to bridge the cytoplasmic domain of cadherins to α-catenin and the actin cytoskeleton. Besides its essential role in the AJs, β-catenin is also a key downstream component of the canonical Wnt pathway that plays diverse and critical roles in embryonic development and adult tissue homeostasis. The Wnt/β-catenin pathway is also involved in the activation of other intracellular messengers such as calcium fluxes, JNK, and SRC kinases. Deregulation of β-catenin activity is associated with multiple diseases including cancers. (PMID: 22617422; 18334222)

## Bemerkenswerte Veröffentlichungen

| Verfasser    | Pubmed ID | Journal            | Anwendung |
|--------------|-----------|--------------------|-----------|
| Hai-Yan Wang | 34588618  | Acta Pharmacol Sin | WB        |
| Jiao Wu      | 34517345  | Aging (Albany NY)  | WB        |
| Tianfu Li    | 36089118  | Cancer Lett        | WB        |

## Lagerung

### Lagerungsbedingungen:

Bei -20°C lagern. Nach dem Versand ein Jahr lang stabil

### Lagerungspuffer:

PBS mit 0.02% Natriumazid und 50% Glycerin pH 7.3.

Aliquotieren ist nicht notwendig bei -20°C Lagerung

**\*\*\* 20ul-Größen enthalten 0.1% BSA**

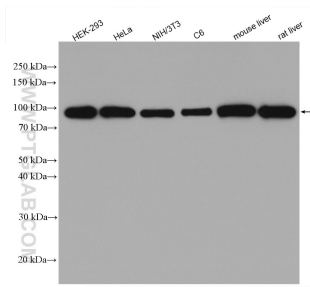
For technical support and original validation data for this product please contact:

T: 1 (888) 4PTGLAB (1-888-478-4522) (toll free in USA), or 1(312) 455-8498 (outside USA)

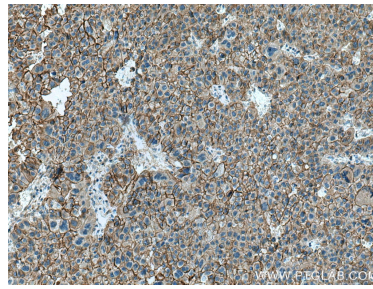
E: [proteintech@ptglab.com](mailto:proteintech@ptglab.com)  
W: [ptglab.com](http://ptglab.com)

**This product is exclusively available under Proteintech Group brand and is not available to purchase from any other manufacturer.**

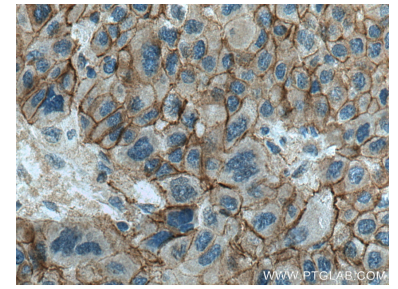
## Ausgewählte Validierungsdaten



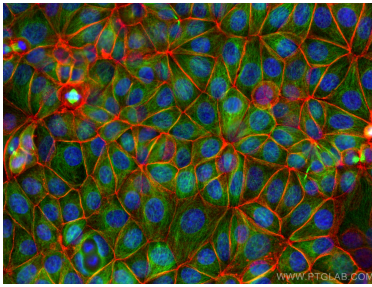
Various lysates were subjected to SDS PAGE followed by western blot with 17565-1-AP (Beta Catenin antibody) at dilution of 1:8000 incubated at room temperature for 1.5 hours.



Immunohistochemical analysis of paraffin-embedded human liver cancer tissue slide using 17565-1-AP (beta-Catenin antibody) at dilution of 1:200 (under 10x lens). Heat mediated antigen retrieval with Tris-EDTA buffer (pH 9.0).



Immunohistochemical analysis of paraffin-embedded human liver cancer tissue slide using 17565-1-AP (beta-Catenin antibody) at dilution of 1:200 (under 40x lens). Heat mediated antigen retrieval with Tris-EDTA buffer (pH 9.0).



Immunofluorescent analysis of (4% PFA) fixed MCF-7 cells using Beta Catenin antibody (17565-1-AP) at dilution of 1:400 and CoraLite®594-Conjugated AffiniPure Goat Anti-Rabbit IgG(H+L), Alpha Tubulin antibody (66031-1-Ig, Clone: 1E4C11, green).