

Nur für Forschungszwecke

SBDS Polyklonaler Antikörper

Katalog-Nr.:17618-1-AP

2 Publikationen



Allgemeine Informationen

Katalog-Nr.:
17618-1-AP

Größe:
150ul, Konzentration: 133 µg/ml von
Nanodrop und 133 µg/ml durch die
Bradford-Methode mit BSA als
Standard;

Wirt:
Kaninchen

Isotyp:
IgG

Immunogen Katalognummer:
AG11814

GenBank-Zugangsnummer:
BC065700

GeneID (NCBI):
51119

Vollständiger Name:
Shwachman-Bodian-Diamond
syndrome

Berechnete Masse:
250 aa, 29 kDa

Beobachtete Masse:
29 kDa

Reinigungsmethode:
Antigen-Affinitätsreinigung

Empfohlene Verdünnungen:
WB 1:500-1:2000
IP 0.5-4.0 µg für IP und 1:200-1:1000
für WB
IHC 1:50-1:500

Anwendungen

Geprüfte Anwendungen:
IHC, IP, WB, ELISA

In Publikationen genannte Anwendungen:
WB

Getestete Reaktivität:
Human, Maus, Ratte

Zitierte Arten:
Human, Ratte

**Hinweis-IHC: Antigenmaskierung mit TE-
Puffer pH 9,0 empfohlen. (*) Wahlweise
kann die Antigenmaskierung auch mit
Citratpuffer pH 6,0 erfolgen.**

Positivkontrollen:

WB : Caco-2-Zellen, HEK-293T-Zellen, HL-60-Zellen,
SH-SY5Y-Zellen

IP : HL-60-Zellen,

IHC : humanes Pankreaskarzinomgewebe,

Hintergrundinformationen

Shwachman-Bodian-Diamond syndrome (SBDS) is a member of a highly conserved protein family that exists from archaea to vertebrates and plants. The protein may function in RNA metabolism. Mutations within its gene are associated with Shwachman-Bodian-Diamond syndrome. This gene encodes a member of a highly conserved protein family that exists from archaea to vertebrates and plants. The encoded protein may function in RNA metabolism. Mutations within this gene are associated with Shwachman-Bodian-Diamond syndrome. An alternative transcript has been described, but its biological nature has not been determined. This gene has a closely linked pseudogene that is distally located. This antibody is a rabbit polyclonal antibody raised against a full-length human SBDS protein, recognizes specifically the 29kd SBDS protein.

Bemerkenswerte Veröffentlichungen

Verfasser	Pubmed ID	Journal	Anwendung
Pan Luo	31923455	Brain Res Bull	WB
D Tong	27991916	Oncogenesis	WB

Lagerung

Lagerungsbedingungen:

Bei -20°C lagern. Nach dem Versand ein Jahr lang stabil

Lagerungspuffer:

PBS mit 0.02% Natriumazid und 50% Glycerin pH 7.3.

Aliquotieren ist nicht notwendig bei -20°C Lagerung

*** 20ul-Größen enthalten 0.1% BSA

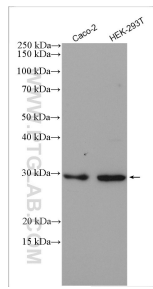
For technical support and original validation data for this product please contact:

T: 1 (888) 4PTGLAB (1-888-478-4522) (toll free
in USA), or 1(312) 455-8498 (outside USA)

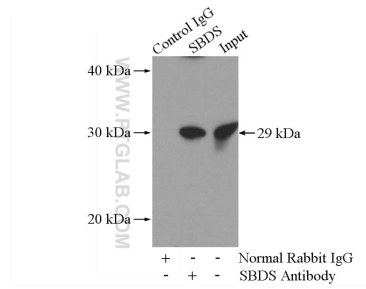
E: proteintech@ptglab.com
W: ptglab.com

This product is exclusively available under Proteintech Group brand and is not available to purchase from any other manufacturer.

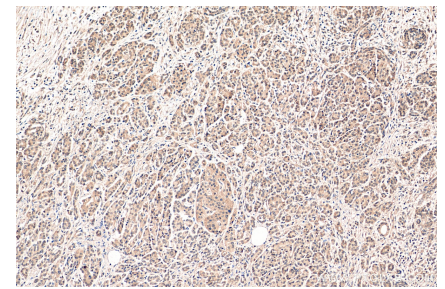
Ausgewählte Validierungsdaten



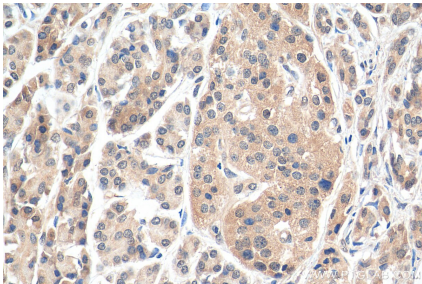
Various lysates were subjected to SDS PAGE followed by western blot with 17618-1-AP (SBDS antibody) at dilution of 1:1000 incubated at room temperature for 1.5 hours.



IP Result of anti-SBDS (IP:17618-1-AP, 4ug; Detection:17618-1-AP 1:300) with HL-60 cells lysate 3040ug.



Immunohistochemical analysis of paraffin-embedded human pancreas cancer tissue slide using 17618-1-AP (SBDS antibody) at dilution of 1:200 (under 10x lens). Heat mediated antigen retrieval with Tris-EDTA buffer (pH 9.0).



Immunohistochemical analysis of paraffin-embedded human pancreas cancer tissue slide using 17618-1-AP (SBDS antibody) at dilution of 1:200 (under 40x lens). Heat mediated antigen retrieval with Tris-EDTA buffer (pH 9.0).