

Nur für Forschungszwecke

BCL10 Polyklonaler Antikörper

Katalog-Nr.:17732-1-AP

Vorgestelltes Produkt



Allgemeine Informationen

Katalog-Nr.:

17732-1-AP

Größe:

150ul, Konzentration: 350 µg/ml von Nanodrop und 200 µg/ml durch die Bradford-Methode mit BSA als Standard;

Wirt:

Kaninchen

Isotyp:

IgG

Immunogen Katalognummer:

AG12170

GenBank-Zugangsnummer:

BC053617

GeneID (NCBI):

8915

Vollständiger Name:

B-cell CLL/lymphoma 10

Berechnete Masse:

233 aa, 26 kDa

Beobachtete Masse:

30 kDa

Reinigungsmethode:

Antigen-Affinitätsreinigung

Empfohlene Verdünnungen:

WB 1:1000-1:4000

IHC 1:50-1:500

Anwendungen

Geprüfte Anwendungen:

FC, IHC, WB, ELISA

Getestete Reaktivität:

Human, Maus, Ratte

Hinweis-IHC: Antigenmaskierung mit TE-Puffer pH 9,0 empfohlen. (*) Wahlweise kann die Antigenmaskierung auch mit Citratpuffer pH 6,0 erfolgen.

Positivkontrollen:

WB: Jurkat-Zellen, K-562-Zellen

IHC: humanes Mammakarzinomgewebe, humanes Lymphomgewebe

Hintergrundinformationen

The gene encoding BCL10 was identified by its recurrent translocation t(1;14)(p22;q32) in a case of mucosa-associated lymphoid tissue (MALT) lymphoma. BCL10 contains a caspase recruitment domain (CARD), and has been shown to induce apoptosis and to activate NF-kappaB.

Lagerung

Lagerungsbedingungen:

Bei -20°C lagern. Nach dem Versand ein Jahr lang stabil

Lagerungspuffer:

PBS mit 0.02% Natriumazid und 50% Glycerin pH 7.3.

Aliquotieren ist nicht notwendig bei -20°C Lagerung

*** 20ul-Größen enthalten 0.1% BSA

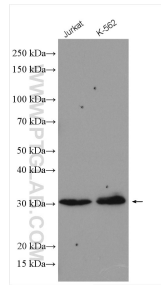
For technical support and original validation data for this product please contact:

T: 1 (888) 4PTGLAB (1-888-478-4522) (toll free in USA), or 1(312) 455-8498 (outside USA)

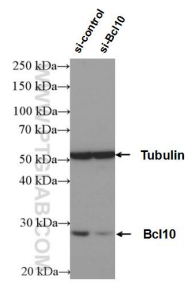
E: proteintech@ptglab.com
W: ptglab.com

This product is exclusively available under Proteintech Group brand and is not available to purchase from any other manufacturer.

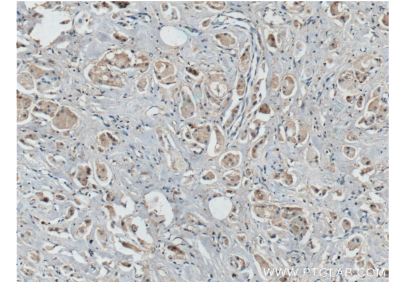
Ausgewählte Validierungsdaten



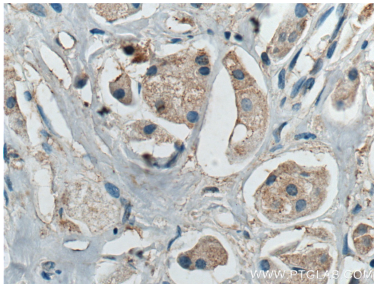
Various lysates were subjected to SDS PAGE followed by western blot with 17732-1-AP (BCL10 antibody) at dilution of 1:2000 incubated at room temperature for 1.5 hours.



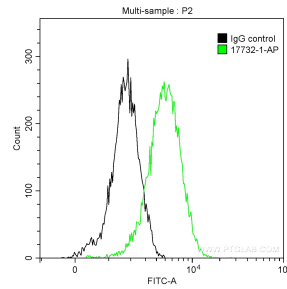
WB result of BCL10 antibody (17732-1-AP; 1:5000; incubated at room temperature for 1.5 hours) with sh-Control and sh-BCL10 transfected K-562 cells.



Immunohistochemical analysis of paraffin-embedded human breast cancer tissue slide using 17732-1-AP (BCL10 antibody) at dilution of 1:200 (under 10x lens. Heat mediated antigen retrieval with Tris-EDTA buffer (pH 9.0).



Immunohistochemical analysis of paraffin-embedded human breast cancer tissue slide using 17732-1-AP (BCL10 antibody) at dilution of 1:200 (under 40x lens. Heat mediated antigen retrieval with Tris-EDTA buffer (pH 9.0).



1×10^6 Jurkat cells were intracellularly stained with 0.5 μ g Anti-Human BCL10 (17732-1-AP) and CoraLite[®]488-Conjugated AffiniPure Goat Anti-Rabbit IgG(H+L) at dilution 1:1000 (green), and 0.5 μ g Control Antibody. Cells were fixed with 90% MeOH.