

## Allgemeine Informationen

<b>Katalog-Nr.:</b> 17796-1-AP	<b>GenBank-Zugangsnummer:</b> BC056160	<b>Reinigungsmethode:</b> Antigen-Affinitätsreinigung
<b>Größe:</b> 150ul , Konzentration: 750 µg/ml von Nanodrop;	<b>GeneID (NCBI):</b> 292	<b>Empfohlene Verdünnungen:</b> WB 1:1000-1:6000 IHC 1:20-1:200
<b>Wirt:</b> Kaninchen	<b>Vollständiger Name:</b> solute carrier family 25 (mitochondrial carrier; adenine nucleotide translocator), member 5	
<b>Isotyp:</b> IgG	<b>Berechnete Masse:</b> 298 aa, 33 kDa	
<b>Immunogen Katalognummer:</b> AG11956	<b>Beobachtete Masse:</b> 30-32, 60 kDa	

## Anwendungen

### Geprüfte Anwendungen:

IHC, WB, ELISA

### In Publikationen genannte Anwendungen:

IHC, WB

### Getestete Reaktivität:

Human, Maus, Ratte

### Zitierte Arten:

Human, Maus, Ratte

**Hinweis-IHC: Antigenmaskierung mit TE-Puffer pH 9,0 empfohlen. (\*) Wahlweise kann die Antigenmaskierung auch mit Citratpuffer pH 6,0 erfolgen.**

### Positivkontrollen:

**WB :** K-562-Zellen, HepG2-Zellen, Mausherzgewebe, Maushirngewebe, Mauslebergewebe, Mausnierengewebe, Rattenherzgewebe, Rattenhirngewebe, Rattenlebergewebe

**IHC :** humanes Nierengewebe, humanes Leberkarzinomgewebe, Mausherzgewebe

## Hintergrundinformationen

Adenine nucleotide translocators (ANTs) are mitochondrial carrier proteins that exchange ATP and ADP between the cytoplasm and the mitochondrial matrix. Four isoforms of ANT were identified: ANT1 (encoded by SLC25A4) is highly expressed in different tissues; ANT2 (encoded by SLC25A5) is predominantly expressed in proliferating, regenerating, or undifferentiated cells; ANT3 is ubiquitously expressed; ANT4 is mainly expressed in testis and germ cells. This antibody recognizes both of ANT1 and ANT2. The predicted molecular weight of ANT1/2 protein is around 32 kDa. While 60 kDa protein can also be observed, which has been proposed as the dimer of ANT1/2. (22423112)

## Bemerkenswerte Veröffentlichungen

Verfasser	Pubmed ID	Journal	Anwendung
Chul-Hee Lee	30225759	Mol Imaging Biol	IHC
Kathleen C Lundberg	25351201	Mol Cell Proteomics	IHC
Kai Sun	36253777	World J Surg Oncol	IHC

## Lagerung

### Lagerungsbedingungen:

Bei -20°C lagern. Nach dem Versand ein Jahr lang stabil

### Lagerungspuffer:

PBS mit 0.02% Natriumazid und 50% Glycerin pH 7.3.

Aliquotieren ist nicht notwendig bei -20°C Lagerung

**\*\*\* 20ul-Größen enthalten 0.1% BSA**

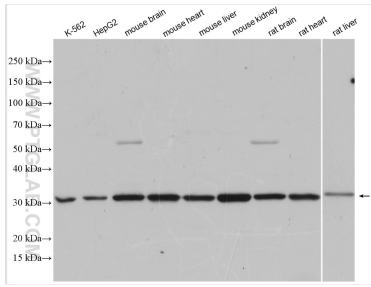
For technical support and original validation data for this product please contact:

T: 1 (888) 4PTGLAB (1-888-478-4522) (toll free in USA), or 1(312) 455-8498 (outside USA)

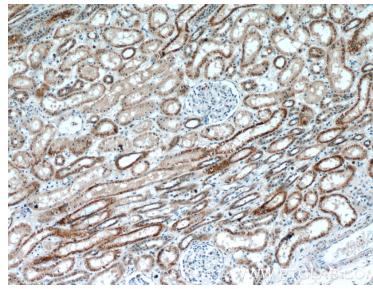
E: [proteintech@ptglab.com](mailto:proteintech@ptglab.com)  
 W: [ptglab.com](http://ptglab.com)

**This product is exclusively available under Proteintech Group brand and is not available to purchase from any other manufacturer.**

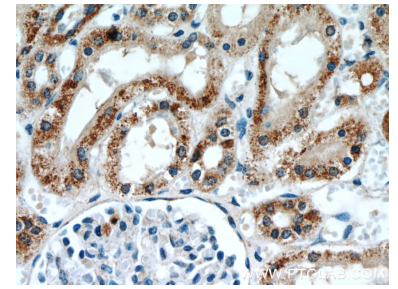
## Ausgewählte Validierungsdaten



Various lysates were subjected to SDS PAGE followed by western blot with 17796-1-AP (ANT1/2 antibody) at dilution of 1:3000 incubated at room temperature for 1.5 hours.



Immunohistochemical analysis of paraffin-embedded human kidney slide using 17796-1-AP (ANT1/2 Antibody) at dilution of 1:50.



Immunohistochemical analysis of paraffin-embedded human kidney slide using 17796-1-AP (ANT1/2 Antibody) at dilution of 1:50.