

Nur für Forschungszwecke

ING1 Polyklonaler Antikörper

Katalog-Nr.:17921-1-AP



Allgemeine Informationen

Katalog-Nr.: 17921-1-AP	GenBank-Zugangsnummer: BC093942	Reinigungsmethode: Antigen-Affinitätsreinigung
Größe: 150ul, Konzentration: 350 µg/ml von Nanodrop und 173 µg/ml durch die Bradford-Methode mit BSA als Standard;	GeneID (NCBI): 3621	Empfohlene Verdünnungen: WB 1:500-1:1000
Wirt: Kaninchen	Vollständiger Name: inhibitor of growth family, member 1	
Isotyp: IgG	Berechnete Masse: 279aa,32 kDa; 422aa,47 kDa	
Immunogen Katalognummer: AG12338	Beobachtete Masse: 47 kDa	

Anwendungen

Geprüfte Anwendungen: WB,ELISA	Positivkontrollen: WB : Mauslebergewebe, A375-Zellen
Getestete Reaktivität: Human, Maus, Ratte	

Hintergrundinformationen

ING1, also inhibitor of growth protein 1, is a 422 amino acid protein, which contains 1 PHD-type zinc finger and belongs to the ING family. ING1 localizes in the nucleus and interacts with TP53. It exists as various isoforms and isoform 1 is a 47 kDa protein. Isoform 2 is a 33 kDa protein and expressed in all normal tissues, as well as in all breast cancer and melanoma cell lines examined. ING1 cooperates with p53/TP53 in the negative regulatory pathway of cell growth by modulating p53-dependent transcriptional activation. It is implicated as a tumor suppressor gene.

Lagerung

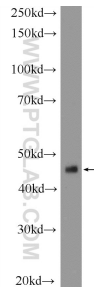
Lagerungsbedingungen:
Bei -20°C lagern. Nach dem Versand ein Jahr lang stabil
Lagerungspuffer:
PBS mit 0.02% Natriumazid und 50% Glycerin pH 7.3.
Aliquotieren ist nicht notwendig bei -20°C Lagerung

***** 20ul-Größen enthalten 0.1% BSA**

For technical support and original validation data for this product please contact:
T: 1 (888) 4PTGLAB (1-888-478-4522) (toll free in USA), or 1(312) 455-8498 (outside USA)
E: proteintech@ptglab.com
W: ptglab.com

This product is exclusively available under Proteintech Group brand and is not available to purchase from any other manufacturer.

Ausgewählte Validierungsdaten



mouse liver tissue were subjected to SDS PAGE followed by western blot with 17921-1-AP (ING1 Antibody) at dilution of 1:600 incubated at room temperature for 1.5 hours.