

Nur für Forschungszwecke

MME,CD10 Polyklonaler Antikörper

Katalog-Nr.:18008-1-AP

15 Publikationen



Allgemeine Informationen

Katalog-Nr.: 18008-1-AP	GenBank-Zugangsnummer: BC106070	Reinigungsmethode: Antigen-Affinitätsreinigung
Größe: 150ul , Konzentration: 800 µg/ml von Nanodrop;	GeneID (NCBI): 4311	Empfohlene Verdünnungen: WB 1:500-1:2000
Wirt: Kaninchen	Vollständiger Name: membrane metallo-endopeptidase	IP 0.5-4.0 ug für IP und 1:500-1:1000 für WB
Isotyp: IgG	Berechnete Masse: 80aa,9 kDa; 750aa,85 kDa	IHC 1:50-1:500
Immunogen Katalognummer: AG12506	Beobachtete Masse: 100 kDa	IF 1:50-1:500

Anwendungen

Geprüfte Anwendungen:
FC, IF, IHC, IP, WB, ELISA

In Publikationen genannte Anwendungen:
IF, IHC, WB

Getestete Reaktivität:
Human, Maus, Ratte

Zitierte Arten:
Human, Maus

Positivkontrollen:

WB: Mausnierengewebe, humanes Nierengewebe, Rattennierengewebe

IP: Raji-Zellen,

IHC: humanes Nierengewebe, humanes Nierenzellkarzinomgewebe

IF: humanes Nierengewebe,

Hinweis-IHC: Antigenmaskierung mit TE-Puffer pH 9,0 empfohlen. (*) Wahlweise kann die Antigenmaskierung auch mit Citratpuffer pH 6,0 erfolgen.

Hintergrundinformationen

MME is also names as neprilysin,CALLA,NEP,SFE,CD10 and belongs to the peptidase M13 family.It is a glycoprotein that is particularly abundant in kidney, where it is present on the brush border of proximal tubules and on glomerular epithelium.CD10 has been considered a useful marker in the diagnosis of renal carcinomas, because of its expression in clear cell and papillary renal cell carcinomas and its absence in chromophobe renal cell carcinomas(PMID:15286660).

Bemerkenswerte Veröffentlichungen

Verfasser	Pubmed ID	Journal	Anwendung
Ke-Wei Chang	30217465	Neurochem Int	WB
Jensen José Ricardo JR	24148528	BMC Genomics	IHC
Hui Zeng	32473218	Int J Biol Macromol	WB

Lagerung

Lagerungsbedingungen:

Bei -20°C lagern. Nach dem Versand ein Jahr lang stabil

Lagerungspuffer:

PBS mit 0.02% Natriumazid und 50% Glycerin pH 7.3.

Aliquotieren ist nicht notwendig bei -20°C Lagerung

*** 20ul-Größen enthalten 0.1% BSA

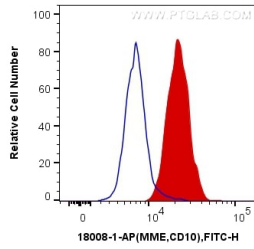
For technical support and original validation data for this product please contact:

T: 1 (888) 4PTGLAB (1-888-478-4522) (toll free in USA), or 1(312) 455-8498 (outside USA)

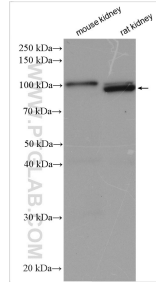
E: proteintech@ptglab.com
W: ptglab.com

This product is exclusively available under Proteintech Group brand and is not available to purchase from any other manufacturer.

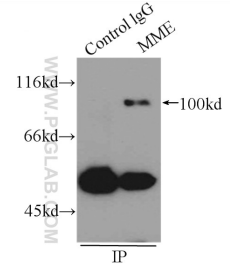
Ausgewählte Validierungsdaten



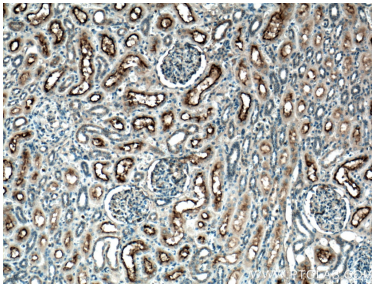
1X10⁶ Ramos cells were intracellularly stained with 0.2 ug Anti-Human MME,CD10 (18008-1-AP) and CoraLite@488-Conjugated AffiniPure Goat Anti-Rabbit IgG(H+L) at dilution 1:1000 (red), or 0.2 ug Control Antibody. Cells were fixed with 4% PFA and permeabilized with Flow Cytometry Perm Buffer (PF00011-C).



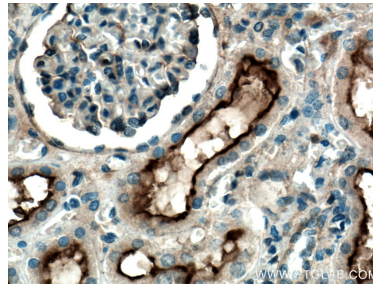
Various lysates were subjected to SDS PAGE followed by western blot with 18008-1-AP (MME,CD10 antibody) at dilution of 1:1000 incubated at room temperature for 1.5 hours.



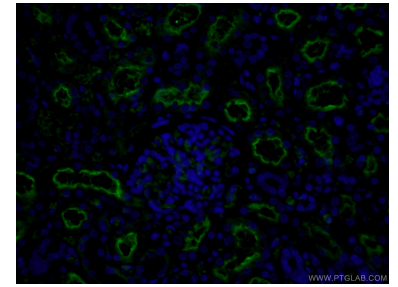
IP Result of anti-MME,CD10 (IP:18008-1-AP, 3ug; Detection:18008-1-AP 1:500) with Raji cells lysate 2400ug.



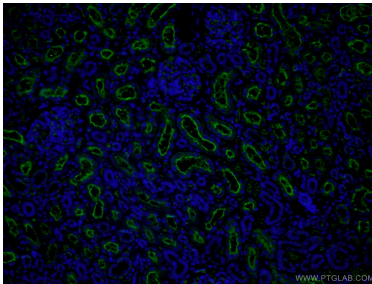
Immunohistochemical analysis of paraffin-embedded human kidney tissue slide using 18008-1-AP (MME,CD10 antibody) at dilution of 1:200 (under 10x lens). Heat mediated antigen retrieval with Tris-EDTA buffer (pH 9.0).



Immunohistochemical analysis of paraffin-embedded human kidney tissue slide using 18008-1-AP (MME,CD10 antibody) at dilution of 1:200 (under 40x lens). Heat mediated antigen retrieval with Tris-EDTA buffer (pH 9.0).



Immunofluorescent analysis of (4% PFA) fixed human kidney tissue using 18008-1-AP (MME,CD10 antibody) at dilution of 1:50 and Alexa Fluor 488-conjugated AffiniPure Goat Anti-Rabbit IgG(H+L).



Immunofluorescent analysis of (4% PFA) fixed human kidney tissue using 18008-1-AP (MME,CD10 antibody) at dilution of 1:50 and Alexa Fluor 488-conjugated AffiniPure Goat Anti-Rabbit IgG(H+L).