

Nur für Forschungszwecke

CLOCK Polyklonaler Antikörper

Katalog-Nr.:18094-1-AP

Vorgestelltes Produkt

12 Publikationen



Allgemeine Informationen

Katalog-Nr.: 18094-1-AP	GenBank-Zugangsnummer: BC041878	Reinigungsmethode: Antigen-Affinitätsreinigung
Größe: 150ul , Konzentration: 300 µg/ml von Nanodrop;	GeneID (NCBI): 9575	Empfohlene Verdünnungen: WB 1:500-1:2000 IF 1:20-1:200
Wirt: Kaninchen	Vollständiger Name: clock homolog (mouse)	
Isotyp: IgG	Berechnete Masse: 846 aa, 95 kDa	
Immunogen Katalognummer: AG12826	Beobachtete Masse: 95-110 kDa	

Anwendungen

Geprüfte Anwendungen: IF, WB, ELISA	Positivkontrollen: WB : HEK-293-Zellen, HeLa-Zellen, PC-3-Zellen IF : HeLa-Zellen,
In Publikationen genannte Anwendungen: IHC, WB	
Getestete Reaktivität: Human	
Zitierte Arten: Human, Maus	

Hintergrundinformationen

Circadian locomoter output cycles protein kaput (CLOCK), also named as BHLHE8 or KIAA0334, is a 846 amino acid protein, which contains one bHLH domain, one PAC domain, and two PAS domains. CLOCK localizes in the nucleus and cytoplasm. CLOCK is expressed in all tissues examined including spleen, thymus, prostate, testis, ovary, small intestine, colon, leukocytes, heart, brain, placenta, lung, liver, skeletal muscle, kidney and pancreas. ARNTL/2-CLOCK heterodimers activate E-box element (5'-CACGTG-3') transcription of a number of proteins of the circadian clock, such as PER1 and PER2. The calculated molecular weight of CLOCK is 95kDa, we detected a 95-110 kDa protein by western blot. Our result is similar to the result of reseach paper (PMID: 30683868).

Bemerkenswerte Veröffentlichungen

Verfasser	Pubmed ID	Journal	Anwendung
Xin Zhu	36373572	Br J Nutr	WB
Apirada Padlom	36376366	Sci Rep	WB
Xiyan Tan	34124276	J Immunol Res	IHC,WB

Lagerung

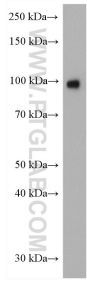
Lagerungsbedingungen:
Bei -20°C lagern. Nach dem Versand ein Jahr lang stabil
Lagerungspuffer:
PBS mit 0.02% Natriumazid und 50% Glycerin pH 7.3.
Aliquotieren ist nicht notwendig bei -20°C Lagerung

*** 20ul-Größen enthalten 0.1% BSA

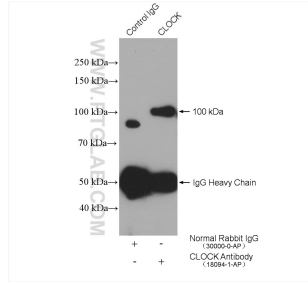
For technical support and original validation data for this product please contact:
T: 1 (888) 4PTGLAB (1-888-478-4522) (toll free in USA), or 1(312) 455-8498 (outside USA)
E: proteintech@ptglab.com
W: ptglab.com

This product is exclusively available under Proteintech Group brand and is not available to purchase from any other manufacturer.

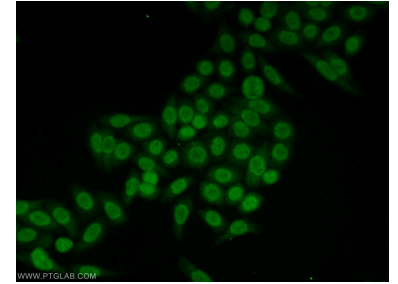
Ausgewählte Validierungsdaten



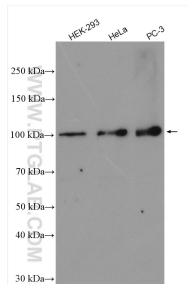
HEK-293 cells were subjected to SDS PAGE followed by western blot with 18094-1-AP (CLOCK antibody) at dilution of 1:1000 incubated at room temperature for 1.5 hours.



IP result of anti-CLOCK (IP:18094-1-AP, 4ug; Detection:18094-1-AP 1:300) with HeLa cells lysate 1600 ug.



Immunofluorescent analysis of HeLa cells using 18094-1-AP (CLOCK antibody) at dilution of 1:50 and Alexa Fluor 488-conjugated AffiniPure Goat Anti-Rabbit IgG(H+L).



Various lysates were subjected to SDS PAGE followed by western blot with 18094-1-AP (CLOCK antibody) at dilution of 1:3000 incubated at room temperature for 1.5 hours.