

## Allgemeine Informationen

Katalog-Nr.:  
18135-1-AP

Größe:  
150ul , Konzentration: 400 µg/ml von  
Nanodrop und 393 µg/ml durch die  
Bradford-Methode mit BSA als  
Standard;

Wirt:  
Kaninchen

Isotyp:  
IgG

Immunogen Katalognummer:  
AG12723

GenBank-Zugangsnummer:  
BC075002

GeneID (NCBI):  
4067

Vollständiger Name:  
v-yes-1 Yamaguchi sarcoma viral  
related oncogene homolog

Berechnete Masse:  
512 aa, 59 kDa

Beobachtete Masse:  
53-56 kDa, 66-70 kDa

Reinigungsmethode:

Antigen-Affinitätsreinigung

Empfohlene Verdünnungen:

WB 1:500-1:2000  
IP 0.5-4.0 µg für IP und 1:500-1:2000  
für WB  
IHC 1:20-1:200  
IF 1:20-1:200

## Anwendungen

Geprüfte Anwendungen:

FC, IF, IHC, IP, WB, ELISA

In Publikationen genannte Anwendungen:

IHC

Getestete Reaktivität:

Human

Zitierte Arten:

Human

**Hinweis-IHC: Antigendemaskierung mit TE-Puffer pH 9,0 empfohlen. (\*) Wahlweise kann die Antigendemaskierung auch mit Citratpuffer pH 6,0 erfolgen.**

Positivkontrollen:

WB : HeLa-Zellen, HL-60-Zellen, Jurkat-Zellen, K-562-Zellen, L02-Zellen

IP : HeLa-Zellen,

IHC : humanes Nierengewebe, humanes Leberzirrhosegewebe

IF : HeLa-Zellen,

## Hintergrundinformationen

LYN, also named as JTK8, p53Lyn and p56Lyn, belongs to the protein kinase superfamily, Tyr protein kinase family and SRC subfamily. It is a non-receptor tyrosine-protein kinase that transmits signals from cell surface receptors and plays an important role in the regulation of innate and adaptive immune responses, hematopoiesis, responses to growth factors and cytokines, integrin signaling, but also responses to DNA damage and genotoxic agents. LYN is a component of the mTOR (mammalian target of rapamycin) pathway.

## Bemerkenswerte Veröffentlichungen

Verfasser	Pubmed ID	Journal	Anwendung
Chonghua Jiang	35186945	Front Cell Dev Biol	IHC

## Lagerung

Lagerungsbedingungen:

Bei -20°C lagern. Nach dem Versand ein Jahr lang stabil

Lagerungspuffer:

PBS mit 0.02% Natriumazid und 50% Glycerin pH 7.3.

Aliquotieren ist nicht notwendig bei -20°C Lagerung

\*\*\* 20ul-Größen enthalten 0.1% BSA

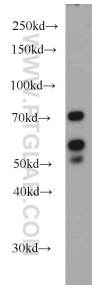
For technical support and original validation data for this product please contact:

T: 1 (888) 4PTGLAB (1-888-478-4522) (toll free in USA), or 1(312) 455-8498 (outside USA)

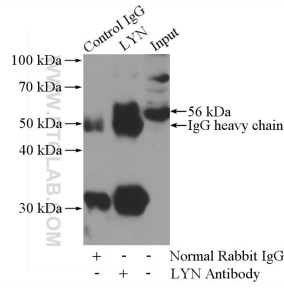
E: proteintech@ptglab.com  
W: ptglab.com

This product is exclusively available under Proteintech Group brand and is not available to purchase from any other manufacturer.

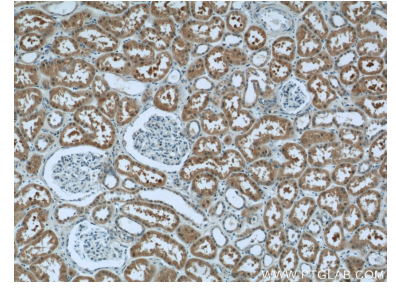
## Ausgewählte Validierungsdaten



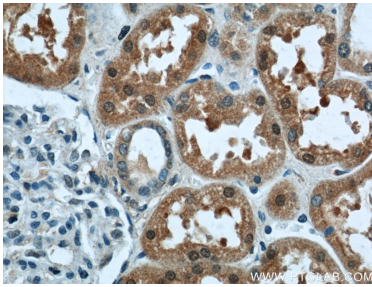
HeLa cells were subjected to SDS PAGE followed by western blot with 18135-1-AP (LYN antibody) at dilution of 1:1000 incubated at room temperature for 1.5 hours.



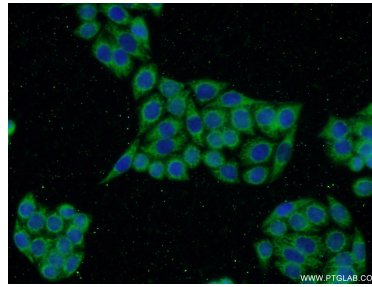
IP Result of anti-LYN (IP:18135-1-AP, 4ug; Detection:18135-1-AP 1:1000) with HeLa cells lysate 1200ug.



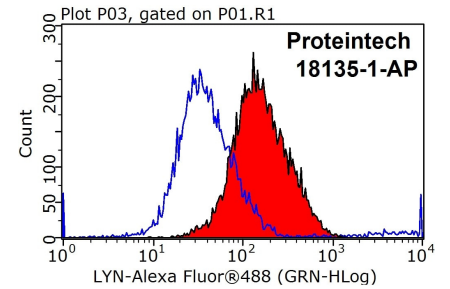
Immunohistochemical analysis of paraffin-embedded human kidney tissue slide using 18135-1-AP (LYN Antibody) at dilution of 1:50 (under 10x lens).



Immunohistochemical analysis of paraffin-embedded human kidney tissue slide using 18135-1-AP (LYN Antibody) at dilution of 1:50 (under 40x lens).



Immunofluorescent analysis of HeLa cells using 18135-1-AP (LYN antibody) at dilution of 1:50 and Alexa Fluor 488-conjugated AffiniPure Goat Anti-Rabbit IgG(H+L).



1X10<sup>6</sup> Jurkat cells were stained with 0.2ug LYN antibody (18135-1-AP, red) and control antibody (BSA, blue). Fixed with 90% MeOH blocked with 3% BSA (30 min). Alexa Fluor 488-conjugated AffiniPure Goat Anti-Rabbit IgG(H+L) with dilution 1:1000.