

Nur für Forschungszwecke

ABCD1 Polyklonaler Antikörper

Katalog-Nr.:18138-1-AP

Vorgestelltes Produkt

2 Publikationen



Allgemeine Informationen

Katalog-Nr.:
18138-1-AP

Größe:
150ul, Konzentration: 600 µg/ml von
Nanodrop;

Wirt:
Kaninchen

Isotyp:
IgG

Immunogen Katalognummer:
AG12757

GenBank-Zugangsnummer:
BC025358

GeneID (NCBI):
215

Vollständiger Name:
ATP-binding cassette, sub-family D
(ALD), member 1

Berechnete Masse:
745 aa, 83 kDa

Beobachtete Masse:
75 kDa

Reinigungsmethode:

Antigen-Affinitätsreinigung

Empfohlene Verdünnungen:

WB 1:500-1:3000
IP 0.5-4.0 ug für IP und 1:500-1:1000
für WB

Anwendungen

Geprüfte Anwendungen:

FC, IP, WB, ELISA

In Publikationen genannte Anwendungen:

WB

Getestete Reaktivität:

Human

Zitierte Arten:

Human

Positivkontrollen:

WB : HepG2-Zellen, HeLa-Zellen

IP : HeLa-Zellen,

Hintergrundinformationen

ABCD1 (also known as ALDP) is a member of the ATP-binding cassette (ABC) transporter superfamily which functions as transporter for a wide variety of substrates. It localizes to the peroxisomal membrane. The exact function is not clear so far. Various mutations of ABCD1 cause X-linked adrenoleukodystrophy (X-ALD), an inherited neurodegenerative disease affecting the nervous system white matter and adrenal cortex.

Bemerkenswerte Veröffentlichungen

Verfasser	Pubmed ID	Journal	Anwendung
Tatsuo Miyamoto	32368833	EMBO J	WB
Chao Xiong	36810450	Signal Transduct Target Ther	WB

Lagerung

Lagerungsbedingungen:

Bei -20°C lagern. Nach dem Versand ein Jahr lang stabil

Lagerungspuffer:

PBS mit 0.02% Natriumazid und 50% Glycerin pH 7.3.

Aliquotieren ist nicht notwendig bei -20°C Lagerung

*** 20ul-Größen enthalten 0.1% BSA

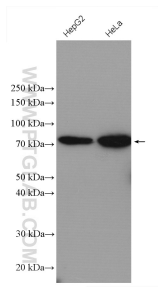
For technical support and original validation data for this product please contact:

T: 1 (888) 4PTGLAB (1-888-478-4522) (toll free
in USA), or 1(312) 455-8498 (outside USA)

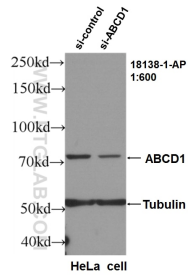
E: proteintech@ptglab.com
W: ptglab.com

This product is exclusively available under Proteintech Group brand and is not available to purchase from any other manufacturer.

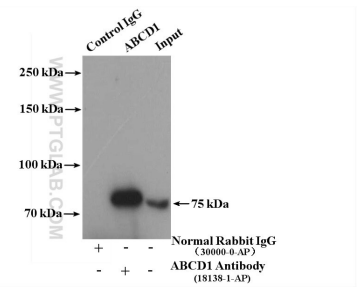
Ausgewählte Validierungsdaten



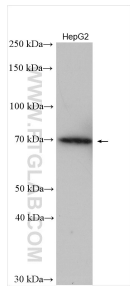
Various lysates were subjected to SDS PAGE followed by western blot with 18138-1-AP (ABCD1 antibody) at dilution of 1:600 incubated at room temperature for 1.5 hours.



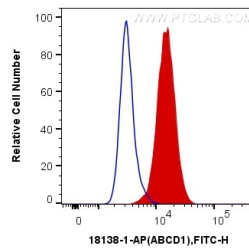
WB result of ABCD1 antibody (18138-1-AP, 1:600) with si-Control and si-ABCD1 transfected HeLa cells..



IP result of anti-ABCD1 (IP:18138-1-AP, 4ug; Detection:18138-1-AP 1:700) with HeLa cells lysate 3000 ug.



HepG2 cells were subjected to SDS PAGE followed by western blot with 18138-1-AP (ABCD1 antibody) at dilution of 1:1500 incubated at room temperature for 1.5 hours.



1X10⁶ HeLa cells were intracellularly stained with 0.4 ug Anti-Human ABCD1 (18138-1-AP) and CoraLite®488-Conjugated AffiniPure Goat Anti-Rabbit IgG(H+L) at dilution 1:1000 (red), or 0.4 ug Control Antibody. Cells were fixed with 4% PFA and permeabilized with Flow Cytometry Perm Buffer (PF00011-C).