

Nur für Forschungszwecke

# Podocalyxin Polyklonaler Antikörper



Katalog-Nr.:18150-1-AP

Vorgestelltes Produkt

8 Publikationen

## Allgemeine Informationen

<b>Katalog-Nr.:</b> 18150-1-AP	<b>GenBank-Zugangsnummer:</b> BC093730	<b>Reinigungsmethode:</b> Antigen-Affinitätsreinigung
<b>Größe:</b> 150ul , Konzentration: 500 µg/ml von Nanodrop und 260 µg/ml durch die Bradford-Methode mit BSA als Standard;	<b>GeneID (NCBI):</b> 5420	<b>Empfohlene Verdünnungen:</b> WB 1:500-1:1000 IHC 1:500-1:4000 IF 1:400-1:1600
<b>Wirt:</b> Kaninchen	<b>Vollständiger Name:</b> podocalyxin-like	
<b>Isotyp:</b> IgG	<b>Berechnete Masse:</b> 526 aa, 55 kDa	
<b>Immunogen Katalognummer:</b> AG12844	<b>Beobachtete Masse:</b> 60-70 kDa	

## Anwendungen

<b>Geprüfte Anwendungen:</b> FC, IF, IHC, WB, ELISA	<b>Positivkontrollen:</b> WB : humanes Nierengewebe, HEK-293-Zellen, HepG2-Zellen IHC : humanes Nierengewebe, IF : humanes Nierengewebe,
<b>In Publikationen genannte Anwendungen:</b> FC, IF, WB	
<b>Getestete Reaktivität:</b> Human	
<b>Zitierte Arten:</b> Human	
<b>Hinweis-IHC: Antigenmaskierung mit TE-Puffer pH 9,0 empfohlen. (*) Wahlweise kann die Antigenmaskierung auch mit Citratpuffer pH 6,0 erfolgen.</b>	

## Hintergrundinformationen

Podocalyxin, also known as podocalyxin-like protein 1 (PODXL or PCLP1), is a transmembrane glycoprotein belonging to the CD34 family of sialomucins. Podocalyxin was originally identified as the major sialoprotein on podocytes of the kidney glomerulus, but was later found to be expressed on vascular endothelial cells and early hematopoietic progenitors. It is involved in the regulation of both adhesion and cell morphology. In addition, podocalyxin is highly expressed in embryonic stem cells and aberrant expression of podocalyxin has been implicated in a wide range of cancers. Podocalyxin is a protein with a peptide bone of 55.5 kDa that undergoes a post-translational glycosylation, the different molecular mass of podocalyxin indicates the extent and variability of glycosylation patterns (PMID: 17092254).

## Bemerkenswerte Veröffentlichungen

Verfasser	Pubmed ID	Journal	Anwendung
Rohit Budhreja	36102038	J Inherit Metab Dis	WB
Julie Bejoy	34746862	STAR Protoc	IF
Akiko Tanoue	34654837	Sci Rep	WB

## Lagerung

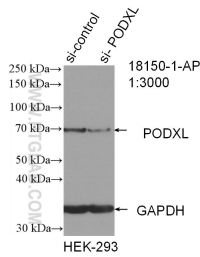
**Lagerungsbedingungen:**  
Bei -20°C lagern. Nach dem Versand ein Jahr lang stabil  
**Lagerungspuffer:**  
PBS mit 0.02% Natriumazid und 50% Glycerin pH 7.3.  
Aliquotieren ist nicht notwendig bei -20°C Lagerung

\*\*\* 20ul-Größen enthalten 0.1% BSA

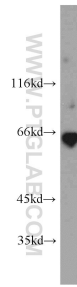
For technical support and original validation data for this product please contact:  
T: 1 (888) 4PTGLAB (1-888-478-4522) (toll free in USA), or 1(312) 455-8498 (outside USA)  
E: proteintech@ptglab.com  
W: ptglab.com

This product is exclusively available under Proteintech Group brand and is not available to purchase from any other manufacturer.

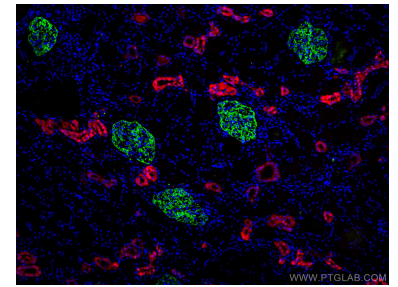
## Ausgewählte Validierungsdaten



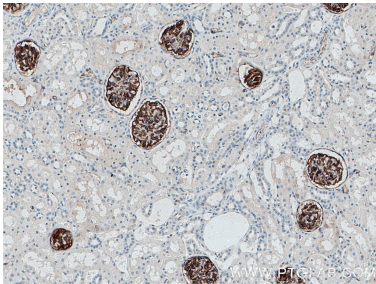
WB result of Podocalyxin antibody (18150-1-AP; 1:3000; incubated at room temperature for 1.5 hours) with sh-Control and sh-Podocalyxin transfected HEK-293 cells.



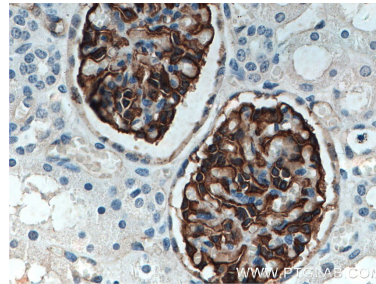
human kidney tissue were subjected to SDS PAGE followed by western blot with 18150-1-AP (PODXL antibody) at dilution of 1:500 incubated at room temperature for 1.5 hours.



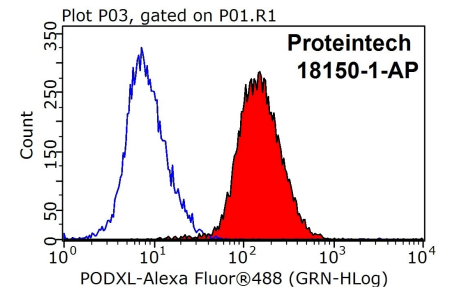
Immunofluorescent analysis of (4% PFA) fixed human kidney tissue using Podocalyxin antibody (18150-1-AP) at dilution of 1:800 and CoraLite®488-Conjugated AffiniPure Goat Anti-Rabbit IgG(H+L), Calbindin-D28k antibody (66394-1-Ig, Clone: 1F8B9, red).



Immunohistochemical analysis of paraffin-embedded human kidney tissue slide using 18150-1-AP (Podocalyxin antibody) at dilution of 1:4000 (under 10x lens. Heat mediated antigen retrieval with Tris-EDTA buffer (pH 9.0).



Immunohistochemical analysis of paraffin-embedded human kidney tissue slide using 18150-1-AP (Podocalyxin antibody) at dilution of 1:4000 (under 40x lens. Heat mediated antigen retrieval with Tris-EDTA buffer (pH 9.0).



1X10<sup>6</sup> HeLa cells were stained with 0.2ug Podocalyxin antibody (18150-1-AP, red) and control antibody (blue). Fixed with 90% MeOH blocked with 3% BSA (30 min). Alexa Fluor 488-conjugated AffiniPure Goat Anti-Rabbit IgG(H+L) with dilution 1:1000.