

Allgemeine Informationen

Katalog-Nr.: 18165-1-AP	GenBank-Zugangsnummer: BC074808	Reinigungsmethode: Antigen-Affinitätsreinigung
Größe: 150ul , Konzentration: 600 µg/ml von Nanodrop;	GeneID (NCBI): 4322	Empfohlene Verdünnungen: WB 1:1000-1:4000 IP 0.5-4.0 ug für IP und 1:200-1:1000 für WB
Wirt: Kaninchen	Vollständiger Name: matrix metalloproteinase 13	IHC 1:50-1:500 IF 1:50-1:500
Isotyp: IgG	Berechnete Masse: 471 aa, 54 kDa	
Immunogen Katalognummer: AG12653	Beobachtete Masse: 65-70 kDa, 50-55 kDa, 40 kDa	

Anwendungen

Geprüfte Anwendungen:

IF, IHC, IP, WB, ELISA

In Publikationen genannte Anwendungen:

IF, IHC, WB

Getestete Reaktivität:

Human, Maus, Ratte

Zitierte Arten:

Hausschwein, Human, Kaninchen, Maus, Ratte, Rind, Zebrafisch

Hinweis-IHC: Antigenmaskierung mit TE-Puffer pH 9,0 empfohlen. (*) Wahlweise kann die Antigenmaskierung auch mit Citratpuffer pH 6,0 erfolgen.

Positivkontrollen:

WB: HeLa-Zellen, Mauslebergewebe, MCF-7-Zellen, MDA-MB-453s-Zellen, Rattenlebergewebe

IP: MCF-7-Zellen,

IHC: humanes Mammakarzinomgewebe, humanes Leberkarzinomgewebe, humanes Leberzirrhosegewebe, Mauslebergewebe

IF: MCF-7-Zellen,

Hintergrundinformationen

MMP-13(Matrix metalloproteinase-13), cleaves type I collagen and was previously thought to be the rodent analogue of human interstitial MMP-1. MMP-13 is found in hypertrophic and calcifying cartilage of mammalian growth plate. The bands seen with rat MMP-13 are consistent with a 59-kDa latent form and a 43-kDa active form reported for this enzyme, along with a smaller band at approximately 30 kDa(PMID:10771523). It also can be detected 3 bands that the glycosylated proMMP-13 (70 kDa), unglycosylated proform (55 kDa), and active MMP-13 enzyme (40kDa) by western blot(PMID:18332263).

Bemerkenswerte Veröffentlichungen

Verfasser	Pubmed ID	Journal	Anwendung
Yangfei Yi	36178080	Orthop Surg	WB,IHC
Yanlin Cao	34593020	Arthritis Res Ther	WB
Yangke Cai	29097832	Dis Markers	WB

Lagerung

Lagerungsbedingungen:

Bei -20°C lagern. Nach dem Versand ein Jahr lang stabil

Lagerungspuffer:

PBS mit 0.02% Natriumazid und 50% Glycerin pH 7.3.

Aliquotieren ist nicht notwendig bei -20°C Lagerung

***** 20ul-Größen enthalten 0.1% BSA**

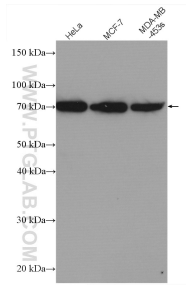
For technical support and original validation data for this product please contact:

T: 1 (888) 4PTGLAB (1-888-478-4522) (toll free in USA), or 1(312) 455-8498 (outside USA)

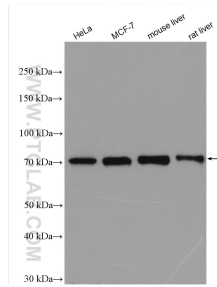
E: proteintech@ptglab.com
W: ptglab.com

This product is exclusively available under Proteintech Group brand and is not available to purchase from any other manufacturer.

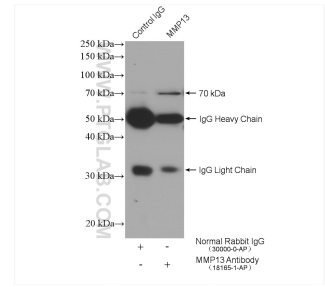
Ausgewählte Validierungsdaten



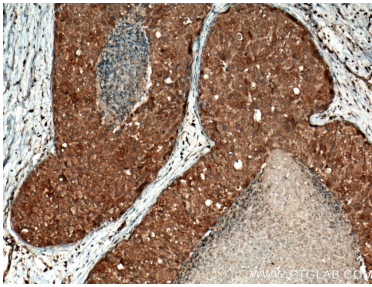
Various lysates were subjected to SDS PAGE followed by western blot with 18165-1-AP (MMP13 antibody) at dilution of 1:500 incubated at room temperature for 1.5 hours.



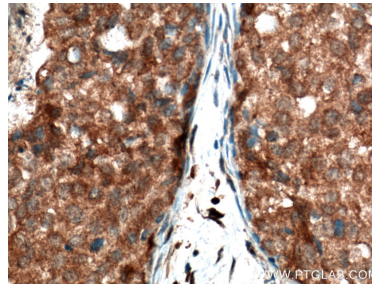
Various lysates were subjected to SDS PAGE followed by western blot with 18165-1-AP (MMP13 antibody) at dilution of 1:2000 incubated at room temperature for 1.5 hours.



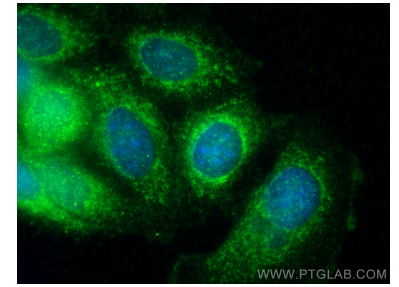
IP result of anti-MMP13 (IP:18165-1-AP, 4ug; Detection:18165-1-AP 1:300) with MCF-7 cells lysate 2480 ug.



Immunohistochemical analysis of paraffin-embedded human breast cancer tissue slide using 18165-1-AP (MMP13 antibody) at dilution of 1:200 (under 10x lens. Heat mediated antigen retrieval with Tris-EDTA buffer (pH 9.0).



Immunohistochemical analysis of paraffin-embedded human breast cancer tissue slide using 18165-1-AP (MMP13 antibody) at dilution of 1:200 (under 40x lens. Heat mediated antigen retrieval with Tris-EDTA buffer (pH 9.0).



Immunofluorescent analysis of (-20°C Methanol) fixed MCF-7 cells using MMP13 antibody (18165-1-AP) at dilution of 1:200 and CoraLite®488-Conjugated AffiniPure Goat Anti-Rabbit IgG(H+L).