

Nur für Forschungszwecke

CLEC4G Polyklonaler Antikörper

Katalog-Nr.: 18173-1-AP



Allgemeine Informationen

Katalog-Nr.: 18173-1-AP	GenBank-Zugangsnummer: BC093691	Reinigungsmethode: Antigen-Affinitätsreinigung
Größe: 150ul, Konzentration: 350 µg/ml von Nanodrop und 313 µg/ml durch die Bradford-Methode mit BSA als Standard;	GeneID (NCBI): 339390	Empfohlene Verdünnungen: WB 1:200-1:1000 IHC 1:500-1:2000 IF 1:50-1:500
Wirt: Kaninchen	Vollständiger Name: C-type lectin domain family 4, member G	
Isotyp: IgG	Berechnete Masse: 293 aa, 33 kDa	
Immunogen Katalognummer: AG12837	Beobachtete Masse: 40 kDa	

Anwendungen

Geprüfte Anwendungen: IF, IHC, WB, ELISA	Positivkontrollen: WB : HUVEC-Zellen, IHC : humanes Lebergewebe, humanes Tonsillitisgewebe IF : humanes Lebergewebe,
Getestete Reaktivität: Human	
Hinweis-IHC: Antigenmaskierung mit TE-Puffer pH 9,0 empfohlen. (*) Wahlweise kann die Antigenmaskierung auch mit Citratpuffer pH 6,0 erfolgen.	

Hintergrundinformationen

CLEC4G, also known as LSECtin, is a member of the C-type lectin family of glycan-binding receptors that is expressed on sinusoidal endothelial cells in liver and lymph nodes. CLEC4G is a type II transmembrane protein of 40 kDa in size with a single C-type lectin-like domain at the COOH terminus, closest in homology to DC-SIGNR, DC-SIGN, and CD23. CLEC4G has been reported as a receptor for Japanese encephalitis virus (PubMed:24623090), ebolavirus (PubMed:16051304), SARS coronavirus/SARS-CoV (PubMed:16051304), lassa virus and Lymphocytic choriomeningitis virus glycoprotein (PubMed:22156524, PubMed:22673088).

Lagerung

Lagerungsbedingungen:
Bei -20°C lagern. Nach dem Versand ein Jahr lang stabil
Lagerungspuffer:
PBS mit 0.02% Natriumazid und 50% Glycerin pH 7.3.
Aliquotieren ist nicht notwendig bei -20°C Lagerung

*** 20ul-Größen enthalten 0.1% BSA

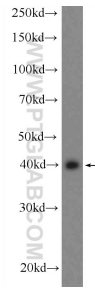
For technical support and original validation data for this product please contact:

T: 1 (888) 4PTGLAB (1-888-478-4522) (toll free in USA), or 1(312) 455-8498 (outside USA)

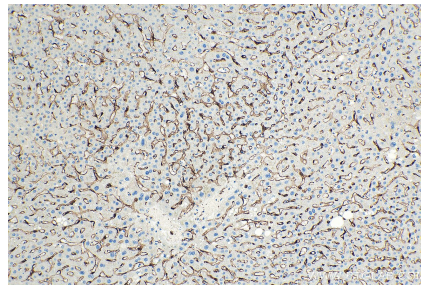
E: proteintech@ptglab.com
W: ptglab.com

This product is exclusively available under Proteintech Group brand and is not available to purchase from any other manufacturer.

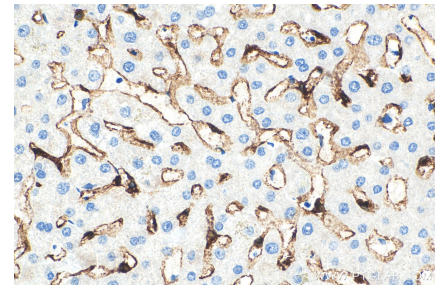
Ausgewählte Validierungsdaten



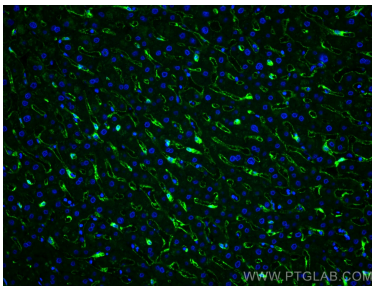
HUVEC cells were subjected to SDS PAGE followed by western blot with 18173-1-AP (CLEC4G Antibody) at dilution of 1:300 incubated at 4 degree celsius over night.



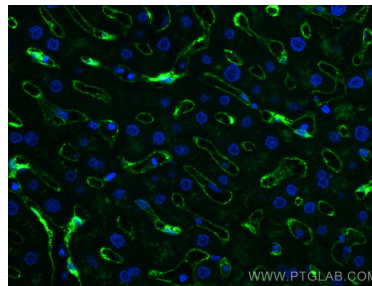
Immunohistochemical analysis of paraffin-embedded human liver tissue slide using 18173-1-AP (CLEC4G antibody) at dilution of 1:1000 (under 10x lens). Heat mediated antigen retrieval with Tris-EDTA buffer (pH 9.0).



Immunohistochemical analysis of paraffin-embedded human liver tissue slide using 18173-1-AP (CLEC4G antibody) at dilution of 1:1000 (under 40x lens). Heat mediated antigen retrieval with Tris-EDTA buffer (pH 9.0).



Immunofluorescent analysis of (4% PFA) fixed human liver tissue using CLEC4G antibody (18173-1-AP) at dilution of 1:200 and CoraLite®488-Conjugated AffiniPure Goat Anti-Rabbit IgG(H+L).



Immunofluorescent analysis of (4% PFA) fixed human liver tissue using CLEC4G antibody (18173-1-AP) at dilution of 1:200 and CoraLite®488-Conjugated AffiniPure Goat Anti-Rabbit IgG(H+L).