

## Allgemeine Informationen

**Katalog-Nr.:**

18214-1-AP

**Größe:**

150ul, Konzentration: 400 µg/ml von Nanodrop und 327 µg/ml durch die Bradford-Methode mit BSA als Standard;

**Wirt:**

Kaninchen

**Isotyp:**

IgG

**Immunogen Katalognummer:**

AG12920

**GenBank-Zugangsnummer:**

BC069532

**GeneID (NCBI):**

56477

**Vollständiger Name:**

chemokine (C-C motif) ligand 28

**Berechnete Masse:**

127 aa, 14 kDa

**Beobachtete Masse:**

8 kDa-9 kDa

**Reinigungsmethode:**

Antigen-Affinitätsreinigung

**Empfohlene Verdünnungen:**

WB 1:500-1:1000

IHC 1:50-1:500

## Anwendungen

**Geprüfte Anwendungen:**

FC, IHC, WB, ELISA

**In Publikationen genannte Anwendungen:**

IF, IHC, WB

**Getestete Reaktivität:**

Human, Maus

**Zitierte Arten:**

Human, Maus, Ratte

**Hinweis-IHC: Antigendemaskierung mit TE-Puffer pH 9,0 empfohlen. (\*) Wahlweise kann die Antigendemaskierung auch mit Citratpuffer pH 6,0 erfolgen.**

**Positivkontrollen:**

WB : humanes Milzgewebe, Jurkat-Zellen, Mausmilzgewebe, PC-3-Zellen

IHC : humanes Kolonkarzinomgewebe,

## Hintergrundinformationen

CCL28, also named as SCYA28, CCK1 and MEC, belongs to the intercrine beta (chemokine CC) family. It has chemotactic activity for resting CD4, CD8 T-cells and eosinophils. CCL28 binds to CCR3 and CCR10 and induces calcium mobilization in a dose-dependent manner. CCL28 is expressed in a variety of human and mouse tissues, and it appears to be predominantly produced by epithelial cells. It is produced by epithelial cells of these tissues suggesting that this chemokine can play an important role by linking homing mechanisms between the gut, nasal mucosa and mammary gland (MG). In WB test, CCL28 is 14kd and 8-9kd (a putatively to a degradation fragment).

## Bemerkenswerte Veröffentlichungen

Verfasser	Pubmed ID	Journal	Anwendung
Tianming Li	36461593	Int Immunopharmacol	IHC,WB
Xiao Li Yang	28713975	Oncol Rep	WB
Tara Karnezis	30709930	Cancer Res	IHC,IF

## Lagerung

**Lagerungsbedingungen:**

Bei -20°C lagern. Nach dem Versand ein Jahr lang stabil

**Lagerungspuffer:**

PBS mit 0.02% Natriumazid und 50% Glycerin pH 7.3.

Aliquotieren ist nicht notwendig bei -20°C Lagerung

\*\*\* 20ul-Größen enthalten 0.1% BSA

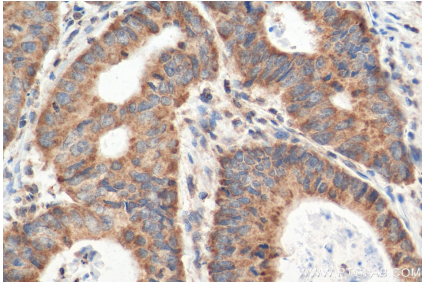
For technical support and original validation data for this product please contact:

T: 1 (888) 4PTGLAB (1-888-478-4522) (toll free in USA), or 1(312) 455-8498 (outside USA)

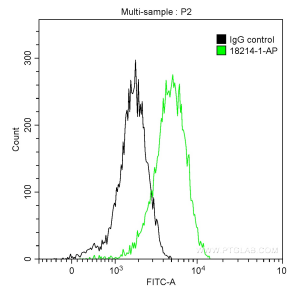
E: [proteintech@ptglab.com](mailto:proteintech@ptglab.com)  
 W: [ptglab.com](http://ptglab.com)

This product is exclusively available under Proteintech Group brand and is not available to purchase from any other manufacturer.

## Ausgewählte Validierungsdaten



Immunohistochemical analysis of paraffin-embedded human colon cancer tissue slide using 18214-1-AP (CCL28 antibody) at dilution of 1:200 (under 40x lens). Heat mediated antigen retrieval with Tris-EDTA buffer (pH 9.0).



1X10<sup>6</sup> Jurkat cells were intracellularly stained with 0.5 ug Anti-Human CCL28 (18214-1-AP) and CoraLite®488-Conjugated AffiniPure Goat Anti-Rabbit IgG(H+L) at dilution 1:1000 (green), and 0.5 ug Control Antibody. Cells were fixed with 90% MeOH.



human spleen tissue were subjected to SDS PAGE followed by western blot with 18214-1-AP (CCL28 antibody) at dilution of 1:300 incubated at room temperature for 1.5 hours.