

## Allgemeine Informationen

<b>Katalog-Nr.:</b> 18227-1-AP	<b>GenBank-Zugangsnummer:</b> BC101631	<b>Reinigungsmethode:</b> Antigen-Affinitätsreinigung
<b>Größe:</b> 150ul , Konzentration: 800 µg/ml von Nanodrop;	<b>GeneID (NCBI):</b> 1576	<b>Empfohlene Verdünnungen:</b> WB 1:1000-1:4000 IHC 1:50-1:500
<b>Wirt:</b> Kaninchen	<b>Vollständiger Name:</b> cytochrome P450, family 3, subfamily A, polypeptide 4	
<b>Isotyp:</b> IgG	<b>Berechnete Masse:</b> 503 aa, 57 kDa	
<b>Immunogen Katalognummer:</b> AG13074	<b>Beobachtete Masse:</b> 51-57 kDa	

## Anwendungen

<b>Geprüfte Anwendungen:</b> IHC, WB, ELISA	<b>Positivkontrollen:</b> WB : Rattenlebergewebe, Maushirngewebe, Mauslebergewebe IHC : humanes Lebergewebe,
<b>In Publikationen genannte Anwendungen:</b> IF, IHC, WB	
<b>Getestete Reaktivität:</b> Human, Maus, Ratte	
<b>Zitierte Arten:</b> Human, Maus, Ratte	
<b>Hinweis-IHC: Antigenmaskierung mit TE-Puffer pH 9,0 empfohlen. (*) Wahlweise kann die Antigenmaskierung auch mit Citratpuffer pH 6,0 erfolgen.</b>	

## Hintergrundinformationen

Cytochrome P450 3A(CYP3A) belongs to the cytochrome P450 family and the enzymes constitute an important detoxification system that contributes to primary metabolism of more than half of all prescribed medications. CYP3A expression determines impairment of drug absorption and efficient systemic clearance in a tissue-specific manner (PMID:17975676). The highest amounts of drug-metabolizing cytochromes P-450 are found in the liver and intestine, with lower amounts found in other organs, including the kidney, lung, and brain. LPS that has reached the circulation stimulates a TLR4-dependent mechanism in the periphery, evoking a reduction in Cyp3a11 expression and metabolism in the liver (PMID: 15878984). Human CYP3A4 is homologous to five mouse P450 isoforms, namely, Cyp3a11, Cyp3a16, Cyp3a41a, Cyp3a41b, and Cyp3a44 (PMID: 22446519). And CYP3A4 is also the human homologue of rat CYP3A1 and CYP3A2 (PMID: 27546062, PMID: 32874920).

## Bemerkenswerte Veröffentlichungen

Verfasser	Pubmed ID	Journal	Anwendung
Zhenyu Wang	31588244	Theranostics	IHC
Chengming Wen	34575568	Pharmaceutics	WB
Linjie Lv	25203445	Hepatology	IF

## Lagerung

**Lagerungsbedingungen:**  
Bei -20°C lagern. Nach dem Versand ein Jahr lang stabil

**Lagerungspuffer:**  
PBS mit 0.02% Natriumazid und 50% Glycerin pH 7.3.

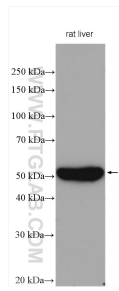
Aliquotieren ist nicht notwendig bei -20°C Lagerung

\*\*\* 20ul-Größen enthalten 0.1% BSA

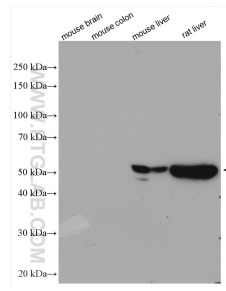
For technical support and original validation data for this product please contact:  
 T: 1 (888) 4PTGLAB (1-888-478-4522) (toll free in USA), or 1(312) 455-8498 (outside USA)  
 E: [proteintech@ptglab.com](mailto:proteintech@ptglab.com)  
 W: [ptglab.com](http://ptglab.com)

This product is exclusively available under Proteintech Group brand and is not available to purchase from any other manufacturer.

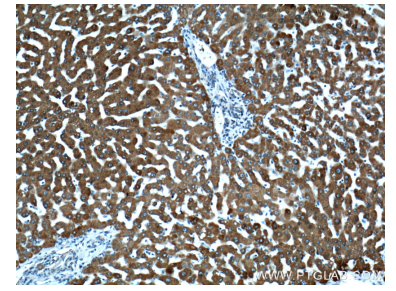
## Ausgewählte Validierungsdaten



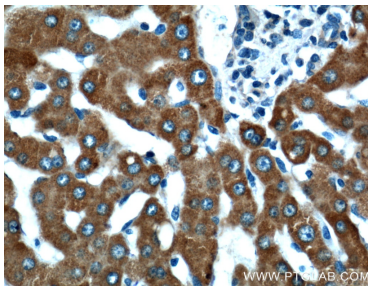
Rat liver tissue was subjected to SDS PAGE followed by western blot with 18227-1-AP (CYP3A4 antibody) at dilution of 1:6000 incubated at room temperature for 1.5 hours.



Various lysates were subjected to SDS PAGE followed by western blot with 18227-1-AP (CYP3A4 antibody) at dilution of 1:6000 incubated at room temperature for 1.5 hours (mouse brain tissue and mouse colon tissue are negative control).



Immunohistochemical analysis of paraffin-embedded human liver tissue slide using 18227-1-AP (CYP3A4 Antibody) at dilution of 1:200 (under 10x lens).



Immunohistochemical analysis of paraffin-embedded human liver tissue slide using 18227-1-AP (CYP3A4 Antibody) at dilution of 1:200 (under 40x lens).