

Nur für Forschungszwecke

APOE Polyklonaler Antikörper

Katalog-Nr.:18254-1-AP

12 Publikationen



Allgemeine Informationen

Katalog-Nr.: 18254-1-AP	GenBank-Zugangsnummer: BC003557	Reinigungsmethode: Antigen-Affinitätsreinigung
Größe: 150ul, Konzentration: 550 µg/ml von Nanodrop;	GeneID (NCBI): 348	Empfohlene Verdünnungen: WB 1:1000-1:6000
Wirt: Kaninchen	Vollständiger Name: apolipoprotein E	
Isotyp: IgG	Berechnete Masse: 36 kDa	
Immunogen Katalognummer: AG13070	Beobachtete Masse: 34-38 kDa	

Anwendungen

Geprüfte Anwendungen: FC, WB, ELISA	Positivkontrollen: WB : HuH-7-Zellen, human plasma, mouse serum
In Publikationen genannte Anwendungen: IF, IHC, WB	
Getestete Reaktivität: Human, Maus	
Zitierte Arten: Human, Maus	

Hintergrundinformationen

The apolipoprotein E (APOE) is a 299-amino acid polypeptide that mediates the binding, internalization, and catabolism of lipoprotein particles, and also serves as a ligand for the LDL (apo B/E) receptor and for the specific apo-E receptor (chylomicron remnant) of hepatic tissues. The very strong association of the APOE ε4 allele with AD risk and its role in the accumulation of amyloid β in brains of people and animal models solidify the biological relevance of APOE isoforms but do not provide mechanistic insight.

Bemerkenswerte Veröffentlichungen

Verfasser	Pubmed ID	Journal	Anwendung
Miao Liu	36063979	Life Sci	WB
Da-Yuan Chen	33140044	bioRxiv	WB
Yuanping Shi	33309167	J Genet Genomics	WB

Lagerung

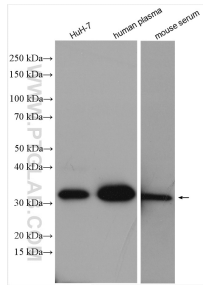
Lagerungsbedingungen:
Bei -20°C lagern. Nach dem Versand ein Jahr lang stabil
Lagerungspuffer:
PBS mit 0.02% Natriumazid und 50% Glycerin pH 7.3.
Aliquotieren ist nicht notwendig bei -20°C Lagerung

*** 20ul-Größen enthalten 0.1% BSA

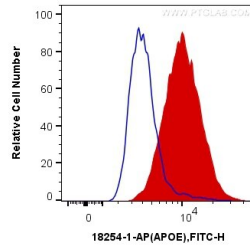
For technical support and original validation data for this product please contact:
T: 1 (888) 4PTGLAB (1-888-478-4522) (toll free in USA), or 1(312) 455-8498 (outside USA)
E: proteintech@ptglab.com
W: ptglab.com

This product is exclusively available under Proteintech Group brand and is not available to purchase from any other manufacturer.

Ausgewählte Validierungsdaten



Various lysates were subjected to SDS PAGE followed by western blot with 18254-1-AP (APOE antibody) at dilution of 1:3000 incubated at room temperature for 1.5 hours.



1×10^6 HepG2 cells were intracellularly stained with 0.4 μ g Anti-Human APOE (18254-1-AP) and CoraLite[®] 488-Conjugated AffiniPure Goat Anti-Rabbit IgG(H+L) at dilution 1:1000 (red), or 0.4 μ g Control Antibody. Cells were fixed with 4% PFA and permeabilized with Flow Cytometry Perm Buffer (PF00011-C).