

Nur für Forschungszwecke

# GSR Polyklonaler Antikörper

Katalog-Nr.:18257-1-AP

Vorgestelltes Produkt

14 Publikationen



## Allgemeine Informationen

Katalog-Nr.:  
18257-1-AP

Größe:  
150ul , Konzentration: 650 µg/ml von  
Nanodrop und 300 µg/ml durch die  
Bradford-Methode mit BSA als  
Standard;

Wirt:  
Kaninchen

Isotyp:  
IgG

Immunogen Katalognummer:  
AG13080

GenBank-Zugangsnummer:  
BC069244

GeneID (NCBI):  
2936

Vollständiger Name:  
glutathione reductase

Berechnete Masse:  
522 aa, 56 kDa

Beobachtete Masse:  
52-55 kDa

Reinigungsmethode:

Antigen-Affinitätsreinigung

Empfohlene Verdünnungen:

WB 1:1000-1:4000

IP 0.5-4.0 ug für IP und 1:500-1:1000  
für WB

IF 1:10-1:100

## Anwendungen

Geprüfte Anwendungen:

IF, IP, WB, ELISA

In Publikationen genannte Anwendungen:

WB

Getestete Reaktivität:

Human, Maus, Ratte

Zitierte Arten:

Human, Maus, Ratte

Positivkontrollen:

WB : Jurkat-Zellen, HeLa-Zellen, humanes Plazenta-  
Gewebe, Maushodengewebe, Mauslungengewebe,  
Rattenhodengewebe

IP : HeLa-Zellen,

IF : MCF-7-Zellen,

## Hintergrundinformationen

GSR(Glutathione reductase) is also named as GLUR, GRD1 and belongs to the class-I pyridine nucleotide-disulfide oxidoreductase family. It was first found in a black American a variant red cell GSR characterized by greater electrophoretic mobility and enzyme activity per unit of hemoglobin than the normal. This protein maintains high levels of reduced glutathione in the cytosol. It has 5 isoforms produced by alternative splicing and alternative initiation. It can also exist as a homodimer with the molecular weight of 110kDa (PMID:8631352). This antibody is specific to GSR.

## Bemerkenswerte Veröffentlichungen

Verfasser	Pubmed ID	Journal	Anwendung
Lin-Yu Jin	36164394	Oxid Med Cell Longev	WB
Xiaohan Jin	36243112	J Biol Chem	WB
Zhi-Guo Zheng	27193186	Sci Rep	WB

## Lagerung

Lagerungsbedingungen:

Bei -20°C lagern. Nach dem Versand ein Jahr lang stabil

Lagerungspuffer:

PBS mit 0.02% Natriumazid und 50% Glycerin pH 7.3.

Aliquotieren ist nicht notwendig bei -20°C Lagerung

\*\*\* 20ul-Größen enthalten 0.1% BSA

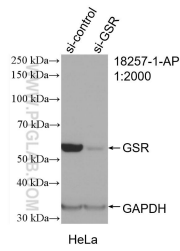
For technical support and original validation data for this product please contact:

T: 1 (888) 4PTGLAB (1-888-478-4522) (toll free  
in USA), or 1(312) 455-8498 (outside USA)

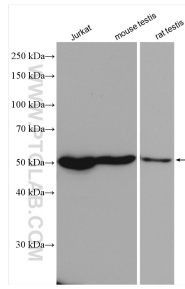
E: proteintech@ptglab.com  
W: ptglab.com

This product is exclusively available under Proteintech Group brand and is not available to purchase from any other manufacturer.

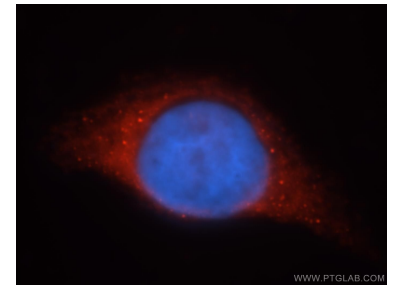
## Ausgewählte Validierungsdaten



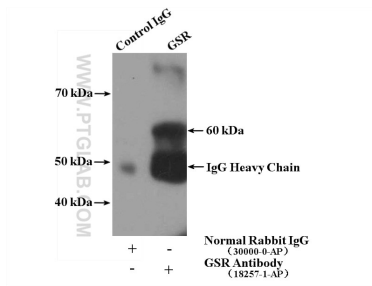
WB result of GSR antibody (18257-1-AP; 1:2000; incubated at room temperature for 1.5 hours) with sh-Control and sh-GSR transfected HeLa cells.



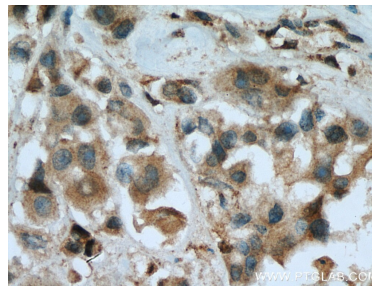
Various lysates were subjected to SDS PAGE followed by western blot with 18257-1-AP (GSR antibody) at dilution of 1:2000 incubated at room temperature for 1.5 hours.



Immunofluorescent analysis of MCF-7 cells, using GSR antibody 18257-1-AP at 1:25 dilution and Rhodamine-labeled goat anti-rabbit IgG (red). Blue pseudocolor = DAPI (fluorescent DNA dye).



IP Result of anti-GSR (IP:18257-1-AP, 4 $\mu$ g; Detection:18257-1-AP 1:500) with HeLa cells lysate 2600 $\mu$ g.



Immunohistochemical analysis of paraffin-embedded human breast cancer tissue slide using 18257-1-AP (GSR antibody) at dilution of 1:400 (under 40x lens). Heat mediated antigen retrieval with Tris-EDTA buffer (pH 9.0).