

Allgemeine Informationen

Katalog-Nr.:
18258-1-AP

Größe:
150ul , Konzentration: 350 µg/ml von Nanodrop und 200 µg/ml durch die Bradford-Methode mit BSA als Standard;

Wirt:
Kaninchen

Isotyp:
IgG

Immunogen Katalognummer:
AG13090

GenBank-Zugangsnummer:
BC001331

GeneID (NCBI):
9776

Vollständiger Name:
KIAA0652

Berechnete Masse:
57 kDa

Beobachtete Masse:
57-63 kDa

Reinigungsmethode:

Antigen-Affinitätsreinigung

Empfohlene Verdünnungen:

WB 1:500-1:1000
IP 0.5-4.0 µg für IP und 1:200-1:1000 für WB
IHC 1:50-1:500
IF 1:50-1:500

Anwendungen

Geprüfte Anwendungen:

IF, IHC, IP, WB, ELISA

In Publikationen genannte Anwendungen:

CoIP, IF, WB

Getestete Reaktivität:

Human, Maus, Ratte

Zitierte Arten:

Human, Maus, Ratte

Hinweis-IHC: Antigenmaskierung mit TE-Puffer pH 9,0 empfohlen. (*) Wahlweise kann die Antigenmaskierung auch mit Citratpuffer pH 6,0 erfolgen.

Positivkontrollen:

WB : SH-SY5Y-Zellen, BGC-823-Zellen, HEK-293-Zellen, HeLa-Zellen, humanes Hirngewebe, Jurkat-Zellen, Maus-Cerebellum-Gewebe, Maushodengewebe, Maus-Thymusgewebe, MCF-7-Zellen

IP : SH-SY5Y-Zellen,

IHC : Mausherzgewebe, humanes Hirngewebe, Maushirngewebe

IF : SH-SY5Y-Zellen,

Hintergrundinformationen

ATG13 is one component protein of the ULK1 complex which is required for autophagosome formation and mitophagy. ATG13 has two nutrient regulatory phosphorylation sites and the phosphorylation status of ATG13 affect regulation of autophagy by modulating enzyme activity and cellular localization of ULK1. Besides, it has been reported the nonautophagic function of ATG13 on cardiac development for ATG13-deficient embryos show myocardial growth defects.(PMID:27387056, 26801615, 26644405)

Bemerkenswerte Veröffentlichungen

| Verfasser | Pubmed ID | Journal | Anwendung |
|-------------|-----------|----------------------|-----------|
| Zhenbing Lv | 36295086 | Life (Basel) | WB |
| Ruyuan Wei | 35936222 | Oxid Med Cell Longev | WB |
| Yihan Wang | 35959437 | Front Pharmacol | WB |

Lagerung

Lagerungsbedingungen:

Bei -20°C lagern. Nach dem Versand ein Jahr lang stabil

Lagerungspuffer:

PBS mit 0.02% Natriumazid und 50% Glycerin pH 7.3.

Aliquotieren ist nicht notwendig bei -20°C Lagerung

***** 20ul-Größen enthalten 0.1% BSA**

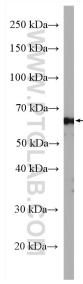
For technical support and original validation data for this product please contact:

T: 1 (888) 4PTGLAB (1-888-478-4522) (toll free in USA), or 1(312) 455-8498 (outside USA)

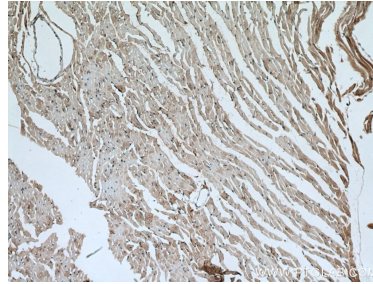
E: proteintech@ptglab.com
W: ptglab.com

This product is exclusively available under Proteintech Group brand and is not available to purchase from any other manufacturer.

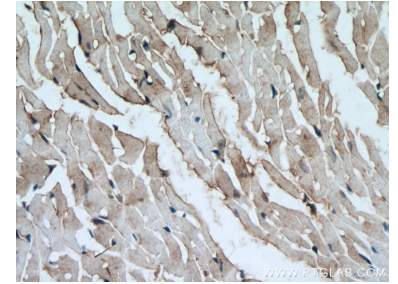
Ausgewählte Validierungsdaten



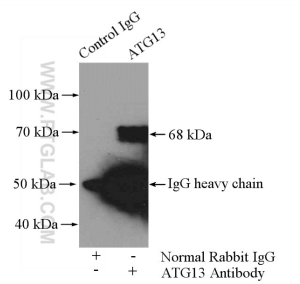
SH-SY5Y cells were subjected to SDS PAGE followed by western blot with 18258-1-AP (ATG13 antibody) at dilution of 1:800 incubated at room temperature for 1.5 hours.



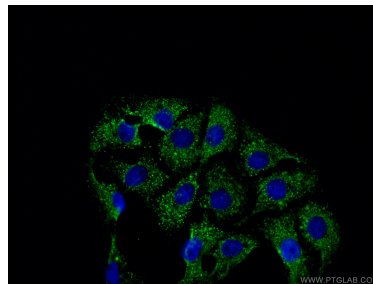
Immunohistochemical analysis of paraffin-embedded mouse heart tissue slide using 18258-1-AP (ATG13 antibody) at dilution of 1:200 (under 10x lens). Heat mediated antigen retrieval with Tris-EDTA buffer (pH 9.0).



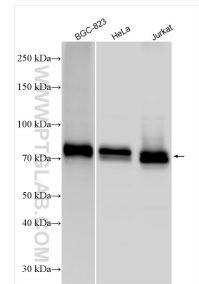
Immunohistochemical analysis of paraffin-embedded mouse heart tissue slide using 18258-1-AP (ATG13 antibody) at dilution of 1:200 (under 40x lens). Heat mediated antigen retrieval with Tris-EDTA buffer (pH 9.0).



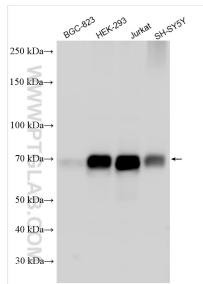
IP Result of anti-ATG13 (IP:18258-1-AP, 4 μ g; Detection:18258-1-AP 1:300) with SH-SY5Y cells lysate 1600 μ g.



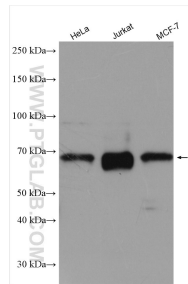
Immunofluorescent analysis of (-20°C Ethanol) fixed SH-SY5Y cells using 18258-1-AP (ATG13 antibody) at dilution of 1:50 and CoraLite488-Conjugated AffiniPure Goat Anti-Rabbit IgG(H+L).



Various lysates were subjected to SDS PAGE followed by western blot with 18258-1-AP (ATG13 antibody) at dilution of 1:2000 incubated at room temperature for 1.5 hours.



Various lysates were subjected to SDS PAGE followed by western blot with 18258-1-AP (ATG13 antibody) at dilution of 1:4000 incubated at room temperature for 1.5 hours.



Various lysates were subjected to SDS PAGE followed by western blot with 18258-1-AP (ATG13 antibody) at dilution of 1:2000 incubated at room temperature for 1.5 hours.