

Allgemeine Informationen

Katalog-Nr.:

18266-1-AP

Größe:

150ul , Konzentration: 500 µg/ml von Nanodrop und 260 µg/ml durch die Bradford-Methode mit BSA als Standard;

Wirt:

Kaninchen

Isotyp:

IgG

Immunogen Katalognummer:

AG6643

GenBank-Zugangsnummer:

BC062602

GeneID (NCBI):

5411

Vollständiger Name:

pinin, desmosome associated protein

Berechnete Masse:

82 kDa

Beobachtete Masse:

82 kDa, 140 kDa

Reinigungsmethode:

Antigen-Affinitätsreinigung

Empfohlene Verdünnungen:

WB 1:500-1:2000
 IP 0.5-4.0 ug für IP und 1:200-1:1000 für WB
 IF 1:50-1:500

Anwendungen

Geprüfte Anwendungen:

IF, IP, WB, ELISA

In Publikationen genannte Anwendungen:

IF, IHC, IP, RIP, WB

Getestete Reaktivität:

Human

Zitierte Arten:

Human, Maus

Positivkontrollen:

WB : HeLa-Zellen, HepG2-Zellen

IP : HeLa-Zellen,

IF : HeLa-Zellen,

Hintergrundinformationen

PNN, also named as DRS or 140 kDa nuclear and cell adhesion-related phosphoprotein, is a 717 amino acid protein, which belongs to the pinin family. PNN localizes in the plasma membrane and is expressed in placenta, lung, liver, kidney, pancreas, spleen, thymus, prostate, testis, ovary, small intestine, colon, heart, epidermis, esophagus, brain and smooth and skeletal muscle. PNN is expressed strongly in melanoma metastasis lesions and advanced primary tumors. PNN as a transcriptional activator binds to the E-box 1 core sequence of the E-cadherin promoter gene. PNN is involved in the establishment and maintenance of epithelia cell-cell adhesion. PNN is a potential tumor suppressor for renal cell carcinoma. The calculated molecular weight of PNN is 82 kDa (native form), but the post-modified protein is 140 kDa (phospho form of isoform 1).

Bemerkenswerte Veröffentlichungen

Verfasser	Pubmed ID	Journal	Anwendung
Xuejun Yang	27175589	Oncotarget	WB
Ting Tang	32364663	Mol Oncol	WB,IP,IF
Liyuan Zhang	27384878	Oncotarget	WB

Lagerung

Lagerungsbedingungen:

Bei -20°C lagern. Nach dem Versand ein Jahr lang stabil

Lagerungspuffer:

PBS mit 0.02% Natriumazid und 50% Glycerin pH 7.3.

Aliquotieren ist nicht notwendig bei -20°C Lagerung

*** 20ul-Größen enthalten 0.1% BSA

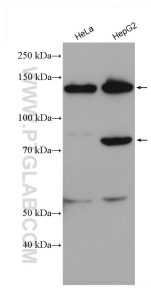
For technical support and original validation data for this product please contact:

T: 1 (888) 4PTGLAB (1-888-478-4522) (toll free in USA), or 1(312) 455-8498 (outside USA)

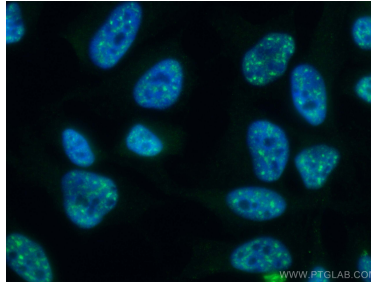
E: proteintech@ptglab.comW: ptglab.com

This product is exclusively available under Proteintech Group brand and is not available to purchase from any other manufacturer.

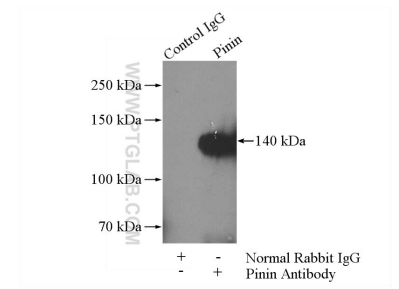
Ausgewählte Validierungsdaten



Various lysates were subjected to SDS PAGE followed by western blot with 18266-1-AP (Pinin antibody) at dilution of 1:1000 incubated at room temperature for 1.5 hours.



Immunofluorescent analysis of (4% PFA) fixed HeLa cells using Pinin antibody (18266-1-AP) at dilution of 1:200 and CoraLite@488-Conjugated AffiniPure Goat Anti-Rabbit IgG(H+L).



IP Result of anti-Pinin (IP:18266-1-AP, 4ug; Detection:18266-1-AP 1:300) with HeLa cells lysate 520ug.