

## Allgemeine Informationen

<b>Katalog-Nr.:</b> 18290-1-AP	<b>GenBank-Zugangsnummer:</b> NM_002397	<b>Reinigungsmethode:</b> Antigen-Affinitätsreinigung
<b>Größe:</b> 150ul, Konzentration: 500 µg/ml von Nanodrop und 260 µg/ml durch die Bradford-Methode mit BSA als Standard;	<b>GeneID (NCBI):</b> 4208	<b>Empfohlene Verdünnungen:</b> WB 1:500-1:1000 IHC 1:20-1:200 IF 1:50-1:500
<b>Wirt:</b> Kaninchen	<b>Vollständiger Name:</b> myocyte enhancer factor 2C	
<b>Isotyp:</b> IgG	<b>Berechnete Masse:</b> 51 kDa	
	<b>Beobachtete Masse:</b> 51 kDa	

## Anwendungen

### Geprüfte Anwendungen:

IF, IHC, WB, ELISA

### In Publikationen genannte Anwendungen:

ChIP, IF, IHC

### Getestete Reaktivität:

Human, Maus, Ratte

### Zitierte Arten:

Human, Maus

**Hinweis-IHC: Antigendemaskierung mit TE-Puffer pH 9,0 empfohlen. (\*) Wahlweise kann die Antigendemaskierung auch mit Citratpuffer pH 6,0 erfolgen.**

### Positivkontrollen:

**WB:** Maus-Cerebellum-Gewebe, Mausherzgewebe, Maushirngewebe, Rattenhirngewebe

**IHC:** humanes Hirngewebe, humanes Eierstockgewebe, humanes Hautgewebe, humanes Herzgewebe, humanes Hodengewebe, humanes Lungengewebe, humanes Milzgewebe, humanes Nierengewebe, humanes Plazenta-Gewebe

**IF:** Maushirngewebe,

## Hintergrundinformationen

MEF2C belongs to the MEF2 family. It is a transcription activator which binds specifically to the MEF2 element present in the regulatory regions of many muscle-specific genes. MEF2C controls cardiac morphogenesis and myogenesis, and is also involved in vascular development. It plays an essential role in hippocampal-dependent learning and memory by suppressing the number of excitatory synapses and thus regulating basal and evoked synaptic transmission. It is crucial for normal neuronal development, distribution, and electrical activity in the neocortex and is necessary for proper development of megakaryocytes and platelets and for bone marrow B lymphopoiesis. This protein is required for B-cell survival and proliferation in response to BCR stimulation, efficient IgG1 antibody responses to T-cell-dependent antigens and for normal induction of germinal center B cells. It may also be involved in neurogenesis and in the development of cortical architecture. The immunogen used is peptide from Beta domain of MEF2C. The antibody can recognize the transcript variant 1 and transcript variant 3 of MEF2C.

## Bemerkenswerte Veröffentlichungen

Verfasser	Pubmed ID	Journal	Anwendung
Kathryn C Allaway	34552240	Nature	
Bulent Ataman	27830782	Nature	ChIP
William E Ackerman	29447339	Biol Reprod	IHC

## Lagerung

### Lagerungsbedingungen:

Bei -20°C lagern. Nach dem Versand ein Jahr lang stabil

### Lagerungspuffer:

PBS mit 0.02% Natriumazid und 50% Glycerin pH 7.3.

Aliquotieren ist nicht notwendig bei -20°C Lagerung

**\*\*\* 20ul-Größen enthalten 0.1% BSA**

For technical support and original validation data for this product please contact:

T: 1 (888) 4PTGLAB (1-888-478-4522) (toll free in USA), or 1(312) 455-8498 (outside USA)

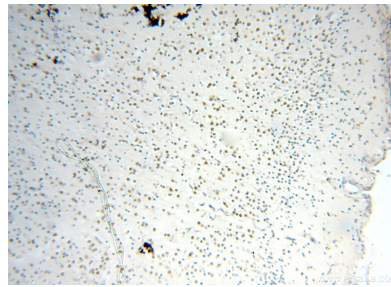
E: [proteintech@ptglab.com](mailto:proteintech@ptglab.com)  
 W: [ptglab.com](http://ptglab.com)

**This product is exclusively available under Proteintech Group brand and is not available to purchase from any other manufacturer.**

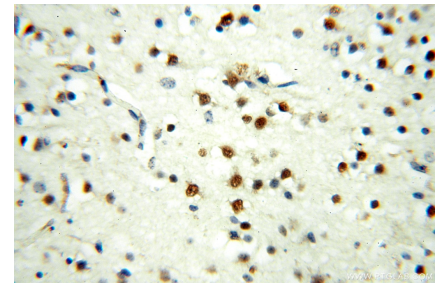
## Ausgewählte Validierungsdaten



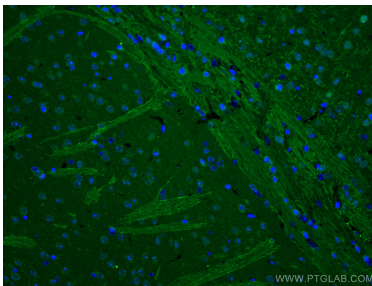
mouse cerebellum tissue were subjected to SDS PAGE followed by western blot with 18290-1-AP (MEF2C antibody) at dilution of 1:300 incubated at room temperature for 1.5 hours.



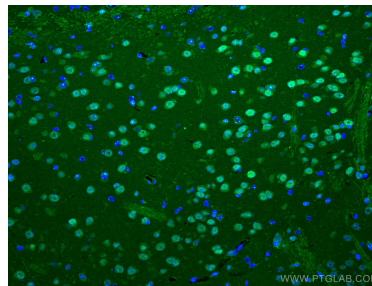
Immunohistochemical analysis of paraffin-embedded human brain using 18290-1-AP (MEF2C antibody) at dilution of 1:50 (under 10x lens).



Immunohistochemical analysis of paraffin-embedded human brain using 18290-1-AP (MEF2C antibody) at dilution of 1:50 (under 40x lens).



Immunofluorescent analysis of (4% PFA) fixed mouse brain tissue using MEF2C antibody (18290-1-AP) at dilution of 1:200 and CoraLite®488-Conjugated AffiniPure Goat Anti-Rabbit IgG(H+L).



Immunofluorescent analysis of (4% PFA) fixed mouse brain tissue using MEF2C antibody (18290-1-AP) at dilution of 1:200 and CoraLite®488-Conjugated AffiniPure Goat Anti-Rabbit IgG(H+L).