

Nur für Forschungszwecke

KRAS-2B-specific Polyklonaler Antikörper

Katalog-Nr.:18294-1-AP



Allgemeine Informationen

Katalog-Nr.: 18294-1-AP	GenBank-Zugangsnummer: BC013572	Reinigungsmethode: Antigen-Affinitätsreinigung
Größe: 150ul , Konzentration: 213 µg/ml durch die Bradford-Methode mit BSA als Standard;	GeneID (NCBI): 3845	Empfohlene Verdünnungen: IHC 1:20-1:200 IF 1:10-1:100
Wirt: Kaninchen	Vollständiger Name: v-Ki-ras2 Kirsten rat sarcoma viral oncogene homolog	
Isotyp: IgG	Berechnete Masse: 21 kDa	

Anwendungen

Geprüfte Anwendungen: IF, IHC, ELISA	Positivkontrollen:
Getestete Reaktivität: Human, Maus, Ratte	IHC : humanes Pankreasgewebe, humanes Magenkrebsgewebe
Hinweis-IHC: Antigendemaskierung mit TE-Puffer pH 9,0 empfohlen. (*) Wahlweise kann die Antigendemaskierung auch mit Citratpuffer pH 6,0 erfolgen.	IF : HepG2-Zellen,

Hintergrundinformationen

KRAS, also called p21, is a member of the Ras superfamily of proteins. It is located on human chromosome 12, and contains four coding exons and a 5' non-coding exon (PMID: 12778136). KRAS is a membrane-anchored guanosine triphosphate/guanosine diphosphate (GTP/GDP)-binding protein and is widely expressed in most human cells. Like other members of the Ras family, the KRAS protein is a GTPase, and it is involved in intracellular signal transduction and mainly responsible for EGFR-signaling activation (PMID: 19117687). KRAS mutations have been found in various malignancies, including lung adenocarcinoma, mucinous adenoma, ductal carcinoma of the pancreas and colorectal carcinoma. KRAS has two isoforms, 2A and 2B. The antibody is specific to KRAS, can't recognize NRAS and HRAS.

Lagerung

Lagerungsbedingungen:
Bei -20°C lagern. Nach dem Versand ein Jahr lang stabil

Lagerungspuffer:
PBS mit 0.02% Natriumazid und 50% Glycerin pH 7.3.

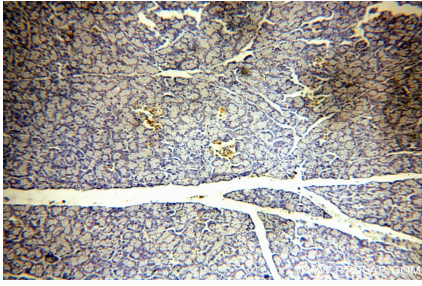
Aliquotieren ist nicht notwendig bei -20°C Lagerung

*** 20ul-Größen enthalten 0.1% BSA

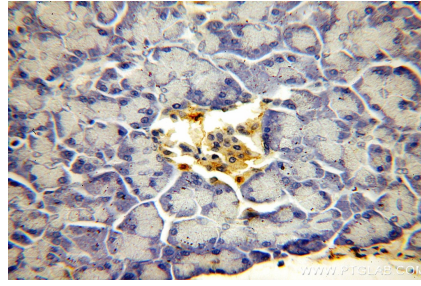
For technical support and original validation data for this product please contact:
T: 1 (888) 4PTGLAB (1-888-478-4522) (toll free in USA), or 1(312) 455-8498 (outside USA)
E: proteintech@ptglab.com
W: ptglab.com

This product is exclusively available under Proteintech Group brand and is not available to purchase from any other manufacturer.

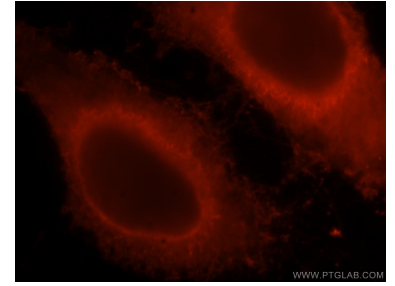
Ausgewählte Validierungsdaten



Immunohistochemical analysis of paraffin-embedded human pancreas using 18294-1-AP (KRAS-2B-specific antibody) at dilution of 1:50 (under 10x lens).



Immunohistochemical analysis of paraffin-embedded human pancreas using 18294-1-AP (KRAS-2B-specific antibody) at dilution of 1:50 (under 40x lens).



Immunofluorescent analysis of HepG2 cells, using KRAS antibody 18294-1-AP at 1:25 dilution and Rhodamine-labeled goat anti-rabbit IgG (red).