

Nur für Forschungszwecke

HER2/ErbB2 Polyklonaler Antikörper



Katalog-Nr.:18299-1-AP

Vorgestelltes Produkt

48 Publikationen

Allgemeine Informationen

Katalog-Nr.:
18299-1-AP

Größe:
150ul , Konzentration: 700 µg/ml von
Nanodrop;

Wirt:
Kaninchen

Isotyp:
IgG

GenBank-Zugangsnummer:
BC167147

GeneID (NCBI):
2064

Vollständiger Name:
v-erb-b2 erythroblastic leukemia
viral oncogene homolog 2,
neuro/glioblastoma derived
oncogene homolog (avian)

Berechnete Masse:
138 kDa

Beobachtete Masse:
185 kDa

Reinigungsmethode:

Antigen-Affinitätsreinigung

Empfohlene Verdünnungen:

WB 1:2000-1:12000
IP 0.5-4.0 µg für IP und 1:500-1:1000
für WB
IHC 1:300-1:1200
IF 1:50-1:500

Anwendungen

Geprüfte Anwendungen:

FC, IF, IHC, IP, WB, ELISA

In Publikationen genannte Anwendungen:

FC, IF, IHC, WB

Getestete Reaktivität:

Human, Maus

Zitierte Arten:

Human, Maus, Ratte

Hinweis-IHC: Antigendemaskierung mit TE-Puffer pH 9,0 empfohlen. (*) Wahlweise kann die Antigendemaskierung auch mit Citratpuffer pH 6,0 erfolgen.

Positivkontrollen:

WB : 4T1-Zellen, HeLa-Zellen, MCF-7-Zellen, SGC-7901-Zellen

IP : SGC-7901-Zellen,

IHC : humanes Mammakarzinomgewebe,

IF : humanes Mammakarzinomgewebe,

Hintergrundinformationen

HER2, also known as ErbB2 and Neu, is a 185-kDa transmembrane glycoprotein that is a member of the epidermal growth factor (EGF) receptor family of receptor tyrosine kinases. It has no ligand binding domain of its own and therefore cannot bind growth factors. However, it does bind tightly to other ligand-bound EGF receptor family members to form a heterodimer, stabilizing ligand binding and enhancing kinase-mediated activation of downstream signalling pathways, such as those involving mitogen-activated protein kinase and phosphatidylinositol-3 kinase. Amplification and/or overexpression of HER2 have been reported in numerous cancers, including breast and ovarian tumors. HER2 is a therapeutic target for the treatment of breast cancer and other carcinomas. This antibody raised against a synthesized peptide corresponding to 1237-1255aa of human HER2 recognizes the 185-kDa full-length glycosylated form and other lower molecular-mass forms of HER2, including the truncated form.

Bemerkenswerte Veröffentlichungen

| Verfasser | Pubmed ID | Journal | Anwendung |
|-----------------|-----------|-----------------------|-----------|
| Samusi Adediran | 36230550 | Cancers (Basel) | WB |
| Zhirui Zhang | 27658586 | J Exp Clin Cancer Res | WB |
| Yangcenzi Xie | 36069700 | Anal Chem | WB,IF |

Lagerung

Lagerungsbedingungen:

Bei -20°C lagern. Nach dem Versand ein Jahr lang stabil

Lagerungspuffer:

PBS mit 0.02% Natriumazid und 50% Glycerin pH 7.3.

Aliquotieren ist nicht notwendig bei -20°C Lagerung

*** 20ul-Größen enthalten 0.1% BSA

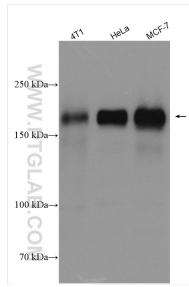
For technical support and original validation data for this product please contact:

T: 1 (888) 4PTGLAB (1-888-478-4522) (toll free in USA), or 1(312) 455-8498 (outside USA)

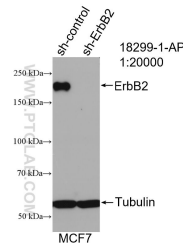
E: proteintech@ptglab.com
W: ptglab.com

This product is exclusively available under Proteintech Group brand and is not available to purchase from any other manufacturer.

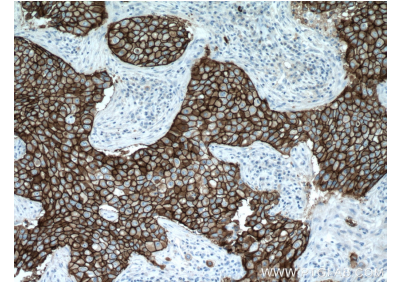
Ausgewählte Validierungsdaten



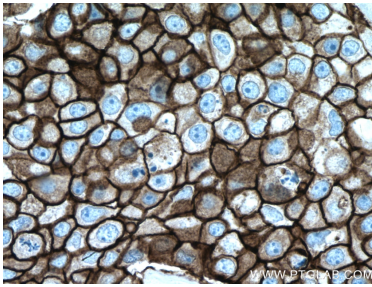
Various lysates were subjected to SDS PAGE followed by western blot with 18299-1-AP (HER2/ErbB2 antibody) at dilution of 1:6000 incubated at room temperature for 1.5 hours.



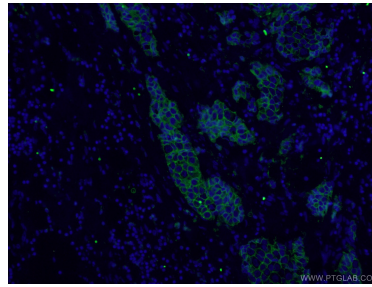
WB result of HER2/ErbB2 antibody (18299-1-AP; 1:20000; incubated at room temperature for 1.5 hours) with sh-Control and sh-HER2/ErbB2 transfected MCF-7 cells.



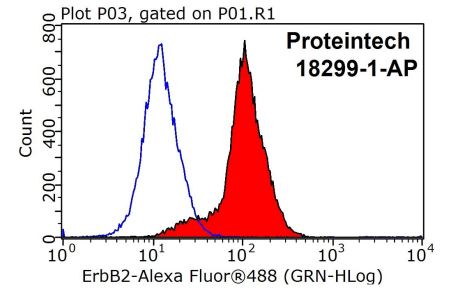
Immunohistochemical analysis of paraffin-embedded human breast cancer tissue slide using 18299-1-AP (HER2/ErbB2 antibody) at dilution of 1:600 (under 10x lens. Heat mediated antigen retrieval with Tris-EDTA buffer (pH 9.0).



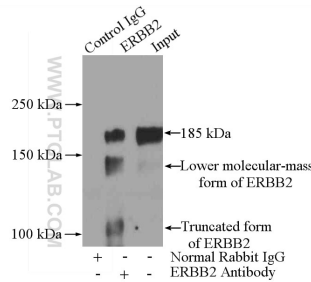
Immunohistochemical analysis of paraffin-embedded human breast cancer tissue slide using 18299-1-AP (HER2/ErbB2 antibody) at dilution of 1:600 (under 40x lens. Heat mediated antigen retrieval with Tris-EDTA buffer (pH 9.0).



Immunofluorescent analysis of (4% PFA) fixed human breast cancer tissue using 18299-1-AP (HER2/ErbB2 antibody) at dilution of 1:50 and Alexa Fluor 488-conjugated AffiniPure Goat Anti-Rabbit IgG(H+L).



1x10⁶ MCF-7 cells were stained with 0.2ug HER2/ErbB2 antibody (18299-1-AP, red) and control antibody (blue). Fixed with 90% MeOH blocked with 3% BSA (30 min). Alexa Fluor 488-conjugated AffiniPure Goat Anti-Rabbit IgG(H+L) with dilution 1:1000.



IP Result of anti-HER2/ErbB2 (IP:18299-1-AP, 5ug; Detection:18299-1-AP 1:500) with SGC-7901 cells lysate 2400ug.