

Nur für Forschungszwecke

ITM2A Polyklonaler Antikörper

Katalog-Nr.:18306-1-AP

6 Publikationen



Allgemeine Informationen

Katalog-Nr.: 18306-1-AP	GenBank-Zugangsnummer: BC040437	Reinigungsmethode: Antigen-Affinitätsreinigung
Größe: 150ul , Konzentration: 300 µg/ml von Nanodrop;	GeneID (NCBI): 9452	Empfohlene Verdünnungen: WB 1:5000-1:50000
Wirt: Kaninchen	Vollständiger Name: integral membrane protein 2A	
Isotyp: IgG	Berechnete Masse: 30 kDa	
	Beobachtete Masse: 32 kDa	

Anwendungen

Geprüfte Anwendungen: FC, WB, ELISA	Positivkontrollen: WB : A549-Zellen, HepG2-Zellen, Jurkat-Zellen
In Publikationen genannte Anwendungen: FC, IF, IHC, WB	
Getestete Reaktivität: Human, Maus, Ratte	
Zitierte Arten: Human, Maus	

Hintergrundinformationen

ITM2A, also named BRICD2A and E25A, is a member of type II integral membrane (ITM2) protein family. ITM2A expression is high in osteogenic and lymphoid tissues, while both ITM2B and ITM2C are expressed in brain. There are 5 articles specifically referring to this gene in PubMed. Proteins are expected to localize in various compartments (cytoplasm, integral to membrane). No phenotype has yet been reported to our knowledge: this gene's in vivo function is yet unknown.

Bemerkenswerte Veröffentlichungen

Verfasser	Pubmed ID	Journal	Anwendung
Alicia A Cutler	35733848	iScience	IF
Céline Cegarra	35313913	Fluids Barriers CNS	IF
Makiko Kihara	25079563	PLoS One	IHC

Lagerung

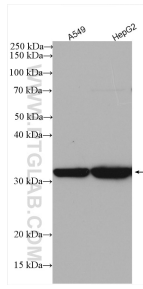
Lagerungsbedingungen:
Bei -20°C lagern. Nach dem Versand ein Jahr lang stabil
Lagerungspuffer:
PBS mit 0.02% Natriumazid und 50% Glycerin pH 7.3.
Aliquotieren ist nicht notwendig bei -20°C Lagerung

*** 20ul-Größen enthalten 0.1% BSA

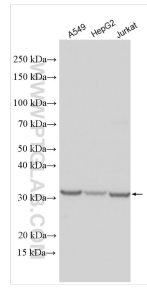
For technical support and original validation data for this product please contact:
T: 1 (888) 4PTGLAB (1-888-478-4522) (toll free in USA), or 1(312) 455-8498 (outside USA)
E: proteintech@ptglab.com
W: ptglab.com

This product is exclusively available under Proteintech Group brand and is not available to purchase from any other manufacturer.

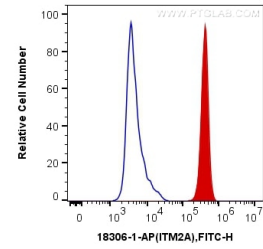
Ausgewählte Validierungsdaten



Various lysates were subjected to SDS PAGE followed by western blot with 18306-1-AP (ITM2A antibody) at dilution of 1:1000 incubated at room temperature for 1.5 hours.



Various lysates were subjected to SDS PAGE followed by western blot with 18306-1-AP (ITM2A antibody) at dilution of 1:15000 incubated at room temperature for 1.5 hours.



1X10⁶ Jurkat cells were intracellularly stained with 0.2 ug Anti-Human ITM2A (18306-1-AP) and CoraLite@488-Conjugated AffiniPure Goat Anti-Rabbit IgG(H+L) at dilution 1:1000 (red), or 0.2 ug Control Antibody. Cells were fixed with 4% PFA and permeabilized with Flow Cytometry Perm Buffer (PF00011-C).