

Nur für Forschungszwecke

ERO1LB Polyklonaler Antikörper

Katalog-Nr.:18312-1-AP



Allgemeine Informationen

Katalog-Nr.: 18312-1-AP	GenBank-Zugangsnummer: BC032823	Reinigungsmethode: Antigen-Affinitätsreinigung
Größe: 150ul , Konzentration: 800 µg/ml von Nanodrop und 447 µg/ml durch die Bradford-Methode mit BSA als Standard;	GeneID (NCBI): 56605	Empfohlene Verdünnungen: WB 1:500-1:3000 IHC 1:20-1:200
Wirt: Kaninchen	Vollständiger Name: ERO1-like beta (<i>S. cerevisiae</i>)	
Isotyp: IgG	Berechnete Masse: 54 kDa	
	Beobachtete Masse: 54 kDa	

Anwendungen

Geprüfte Anwendungen: IHC, WB, ELISA	Positivkontrollen:
Getestete Reaktivität: Human, Maus, Ratte	WB: humanes Hirngewebe, Maushirngewebe, Rattenhirngewebe
Hinweis-IHC: Antigendemaskierung mit TE-Puffer pH 9,0 empfohlen. (*) Wahlweise kann die Antigendemaskierung auch mit Citratpuffer pH 6,0 erfolgen.	IHC: humanes Pankreasgewebe,

Hintergrundinformationen

ERO1LB is an essential oxidoreductase that oxidizes proteins in the endoplasmic reticulum to produce disulfide bonds. It acts by oxidizing directly P4HB/PDI isomerase through a direct disulfide exchange. It does not act as a direct oxidant of folding substrate, but relies on P4HB/PDI to transfer oxidizing equivalent. Associates with ERP44 but not with GRP54, demonstrating that it does not oxidize all PDI related proteins and can discriminate between PDI and related proteins. Its reoxidation probably involves electron transfer to molecular oxygen via FAD. Glutathione may be required to regulate its activity in the endoplasmic reticulum. It may be responsible for a significant proportion of reactive oxygen species (ROS) in the being a source of oxidative stress. It is required for the folding of cell, thereby being a source of oxidative stress. This antibody has no cross reaction to ERO1L.

Lagerung

Lagerungsbedingungen:
Bei -20°C lagern. Nach dem Versand ein Jahr lang stabil
Lagerungspuffer:
PBS mit 0.02% Natriumazid und 50% Glycerin pH 7.3.
Aliquotieren ist nicht notwendig bei -20°C Lagerung

***** 20ul-Größen enthalten 0.1% BSA**

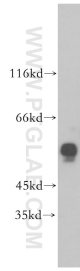
For technical support and original validation data for this product please contact:

T: 1 (888) 4PTGLAB (1-888-478-4522) (toll free in USA), or 1(312) 455-8498 (outside USA)

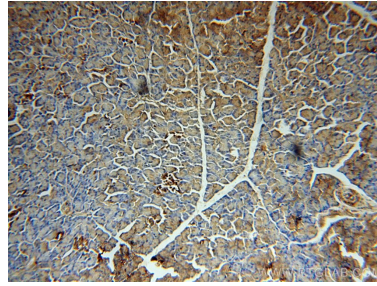
E: proteintech@ptglab.com
W: ptglab.com

This product is exclusively available under Proteintech Group brand and is not available to purchase from any other manufacturer.

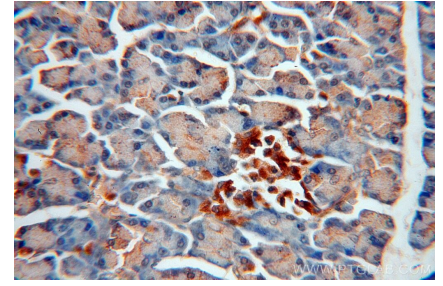
Ausgewählte Validierungsdaten



human brain tissue were subjected to SDS PAGE followed by western blot with 18312-1-AP (ERO1LB antibody) at dilution of 1:300 incubated at room temperature for 1.5 hours.



Immunohistochemical analysis of paraffin-embedded human pancreas using 18312-1-AP (ERO1LB antibody) at dilution of 1:100 (under 10x lens).



Immunohistochemical analysis of paraffin-embedded human pancreas using 18312-1-AP (ERO1LB antibody) at dilution of 1:100 (under 40x lens).