

Nur für Forschungszwecke

# SPATA5L1 Polyklonaler Antikörper

Katalog-Nr.:18414-1-AP



## Allgemeine Informationen

<b>Katalog-Nr.:</b> 18414-1-AP	<b>GenBank-Zugangsnummer:</b> BC000981	<b>Reinigungsmethode:</b> Antigen-Affinitätsreinigung
<b>Größe:</b> 150ul , Konzentration: 713 µg/ml durch die Bradford-Methode mit BSA als Standard;	<b>GeneID (NCBI):</b> 79029	<b>Empfohlene Verdünnungen:</b> WB 1:500-1:1000
<b>Wirt:</b> Kaninchen	<b>Vollständiger Name:</b> spermatogenesis associated 5-like 1	
<b>Isotyp:</b> IgG	<b>Berechnete Masse:</b> 81 kDa	
<b>Immunogen Katalognummer:</b> AG13269	<b>Beobachtete Masse:</b> 81 kDa	

## Anwendungen

<b>Geprüfte Anwendungen:</b> WB, ELISA	<b>Positivkontrollen:</b> WB : MCF-7-Zellen, HeLa-Zellen, Jurkat-Zellen, K-562-Zellen
<b>Getestete Reaktivität:</b> Human	

## Hintergrundinformationen

SPATA5L1 (Spermatogenesis-associated protein 5-like protein 1) belongs to the AAA+ATPase protein superfamily. A full-length SPATA5L1 transcript and a short SPATA5L1 variant can be produced in human by alternative splicing. Bi-allelic SPATA5L1 variants lead to a human disease characterized by sensorineural hearing loss with or without a nonprogressive mixed neurodevelopmental phenotype. And immunofluorescence analysis in rat hippocampal neurons demonstrated that SPATA5L1 was located in neuronal and glial cell nuclei, with more prominent expression in neurons (PubMed:34626583). SPATA5L1 also has 3 isoforms.

## Lagerung

**Lagerungsbedingungen:**  
Bei -20°C lagern. Nach dem Versand ein Jahr lang stabil  
**Lagerungspuffer:**  
PBS mit 0.02% Natriumazid und 50% Glycerin pH 7.3.  
Aliquotieren ist nicht notwendig bei -20°C Lagerung

\*\*\* 20ul-Größen enthalten 0.1% BSA

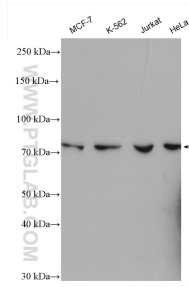
For technical support and original validation data for this product please contact:

T: 1 (888) 4PTGLAB (1-888-478-4522) (toll free  
in USA), or 1(312) 455-8498 (outside USA)

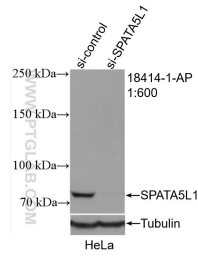
E: [proteintech@ptglab.com](mailto:proteintech@ptglab.com)  
W: [ptglab.com](http://ptglab.com)

This product is exclusively available under Proteintech Group brand and is not available to purchase from any other manufacturer.

## Ausgewählte Validierungsdaten



Various lysates were subjected to SDS PAGE followed by western blot with 18414-1-AP (SPATA5L1 antibody) at dilution of 1:500 incubated at room temperature for 1.5 hours.



WB result of SPATA5L1 antibody (18414-1-AP; 1:600; incubated at room temperature for 1.5 hours) with sh-Control and sh-SPATA5L1 transfected HeLa cells.