

Nur für Forschungszwecke

c-Kit/CD117 Polyklonaler Antikörper



Katalog-Nr.:18696-1-AP

17 Publikationen

Allgemeine Informationen

| | | |
|--|--|--|
| Katalog-Nr.: 18696-1-AP | GenBank-Zugangsnummer: BC071593 | Reinigungsmethode: Antigen-Affinitätsreinigung |
| Größe: 150ul , Konzentration: 400 µg/ml von Nanodrop; | GeneID (NCBI): 3815 | Empfohlene Verdünnungen: WB 1:1000-1:4000 IHC 1:50-1:500 IF 1:50-1:500 |
| Wirt: Kaninchen | Vollständiger Name: v-kit Hardy-Zuckerman 4 feline sarcoma viral oncogene homolog | |
| Isotyp: IgG | Berechnete Masse: 110 kDa | |
| | Beobachtete Masse: 140-160 kDa | |

Anwendungen

Geprüfte Anwendungen:

FC, IF, IHC, WB, ELISA

In Publikationen genannte Anwendungen:

IF, IHC, WB

Getestete Reaktivität:

Human

Zitierte Arten:

Human, Maus, Ratte

Positivkontrollen:

WB : Mo7e cells,

IHC : Stromatumorgewebe, humanes Hodengewebe,
humanes Plazenta-Gewebe, Insulinomgewebe

IF : MCF-7-Zellen,

Hinweis-IHC: Antigenmaskierung mit TE-Puffer pH 9,0 empfohlen. (*) Wahlweise kann die Antigenmaskierung auch mit Citratpuffer pH 6,0 erfolgen.

Hintergrundinformationen

KIT, also named as SCFR, c-Kit and CD117, is a transmembrane tyrosine kinase encoded by the c-Kit proto oncogene. It is a type 3 transmembrane receptor for MGF (mast cell growth factor, also known as stem cell factor). KIT acts to regulate a variety of biological responses including cell proliferation, apoptosis, chemotaxis and adhesion. Ligand(SCF) binding to the extracellular domain leads to autophosphorylation on several tyrosine residues within the cytoplasmic domain, and activation. Phosphorylation at tyrosine 721 of KIT allows binding and activation of PI3 kinase. Loss of expression of KIT appears to be associated with progression of some tumors (melanoma) and autocrine/paracrine stimulation of the kit/SCF system may participate in human solid tumors such as lung, breast, testicular and gynecological malignancies. Mutations in Kit have been found to be important for tumor growth and progression in a variety of cancers including mast cell diseases, gastrointestinal stromal tumor, acute myeloid leukemia, Ewing sarcoma and lung cancer.

Bemerkenswerte Veröffentlichungen

| Verfasser | Pubmed ID | Journal | Anwendung |
|---------------|-----------|-------------------------|-----------|
| Yuelong Jiang | 36355485 | Pharmaceuticals (Basel) | WB |
| Xiu-Bo Sang | 27748937 | Oncol Rep | |
| Ling Ding | 36362141 | Int J Mol Sci | WB |

Lagerung

Lagerungsbedingungen:

Bei -20°C lagern. Nach dem Versand ein Jahr lang stabil

Lagerungspuffer:

PBS mit 0.02% Natriumazid und 50% Glycerin pH 7.3.

Aliquotieren ist nicht notwendig bei -20°C Lagerung

*** 20ul-Größen enthalten 0.1% BSA

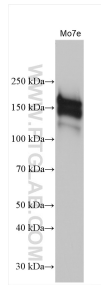
For technical support and original validation data for this product please contact:

T: 1 (888) 4PTGLAB (1-888-478-4522) (toll free in USA), or 1(312) 455-8498 (outside USA)

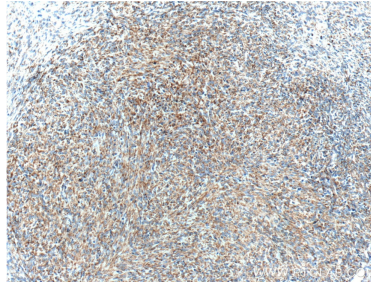
E: proteintech@ptglab.com
W: ptglab.com

This product is exclusively available under Proteintech Group brand and is not available to purchase from any other manufacturer.

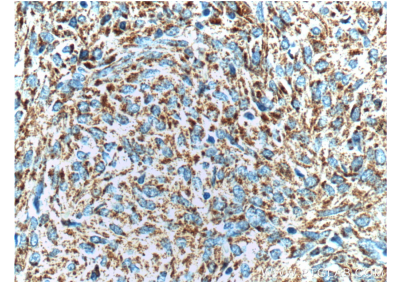
Ausgewählte Validierungsdaten



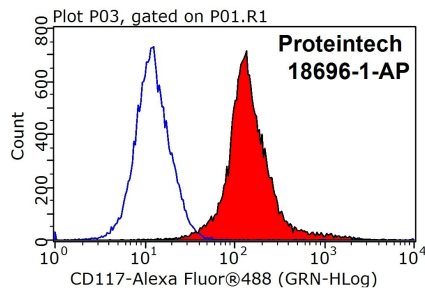
Mo7e cells were subjected to SDS PAGE followed by western blot with 18696-1-AP (c-Kit/CD117 antibody) at dilution of 1:2000 incubated at room temperature for 1.5 hours.



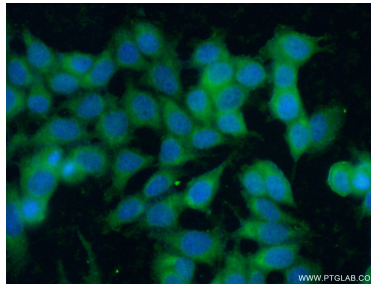
Immunohistochemical analysis of paraffin-embedded stromal tumor tissue slide using 18696-1-AP (c-Kit/CD117 antibody at dilution of 1:200 (under 10x lens).



Immunohistochemical analysis of paraffin-embedded stromal tumor tissue slide using 18696-1-AP (c-Kit/CD117 antibody at dilution of 1:200 (under 40x lens).



1X10⁶ MCF-7 cells were stained with 0.2ug c-Kit/CD117 antibody (18696-1-AP, red) and control antibody (blue). Fixed with 90% MeOH blocked with 3% BSA (30 min). Alexa Fluor 488-conjugated AffiniPure Goat Anti-Rabbit IgG(H+L) with dilution 1:1000.



Immunofluorescent analysis of (-20°C Ethanol) fixed MCF-7 cells using 18696-1-AP (c-Kit/CD117 antibody) at dilution of 1:50 and Alexa Fluor 488-conjugated AffiniPure Goat Anti-Rabbit IgG(H+L).