

Nur für Forschungszwecke

# CD206 Polyklonaler Antikörper

Katalog-Nr.:18704-1-AP

265 Publikationen



## Allgemeine Informationen

<b>Katalog-Nr.:</b> 18704-1-AP	<b>GenBank-Zugangsnummer:</b> NM_002438	<b>Reinigungsmethode:</b> Antigen-Affinitätsreinigung
<b>Größe:</b> 150ul , Konzentration: 700 µg/ml von Nanodrop;	<b>GeneID (NCBI):</b> 4360	<b>Empfohlene Verdünnungen:</b> WB 1:500-1:1000
<b>Wirt:</b> Kaninchen	<b>Vollständiger Name:</b> mannose receptor, C type 1	
<b>Isotyp:</b> IgG	<b>Berechnete Masse:</b> 166 kDa	
	<b>Beobachtete Masse:</b> 165-180 kDa	

## Anwendungen

<b>Geprüfte Anwendungen:</b> FC, WB, ELISA	<b>Positivkontrollen:</b> WB : Mauslebergewebe, humanes Nierengewebe, humanes Plazenta-Gewebe, Rattenlebergewebe
<b>In Publikationen genannte Anwendungen:</b> FC, IF, WB	
<b>Getestete Reaktivität:</b> Human, Maus, Ratte	
<b>Zitierte Arten:</b> Hausschwein, Human, Maus, Ratte, Miesmuschel	

## Hintergrundinformationen

CD206, also named as MMR, CLEC13D and MRC1, is a type I membrane receptor that mediates the endocytosis of glycoproteins by macrophages. CD206 has been shown to bind high-mannose structures on the surface of potentially pathogenic viruses, bacteria, and fungi so that they can be neutralized by phagocytic engulfment. CD206 is a 170 kDa transmembrane glycoprotein which contains 5 domains: an amino-terminal cysteine-rich region, a fibronectin type II repeat, a series of eight tandem lectin-like carbohydrate recognition domains (responsible for the recognition of mannose and fucose), a transmembrane domain, and an intracellular carboxy-terminal tail. It is expressed on most tissue macrophages, in vitro derived dendritic cells, lymphatic and sinusoidal endothelia. This antibody recognizes the intracellular carboxy-terminal part of CD206 and MRC1L1.

## Bemerkenswerte Veröffentlichungen

Verfasser	Pubmed ID	Journal	Anwendung
Shu-Ling Wang	31564717	Cell Death Dis	WB,IF
Shiao Tong	36248799	Front Immunol	WB,IHC
Yi-Na Zhang	36168082	Transl Stroke Res	IF

## Lagerung

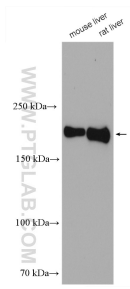
**Lagerungsbedingungen:**  
Bei -20°C lagern. Nach dem Versand ein Jahr lang stabil  
**Lagerungspuffer:**  
PBS mit 0.02% Natriumazid und 50% Glycerin pH 7.3.  
Aliquotieren ist nicht notwendig bei -20°C Lagerung

\*\*\* 20ul-Größen enthalten 0.1% BSA

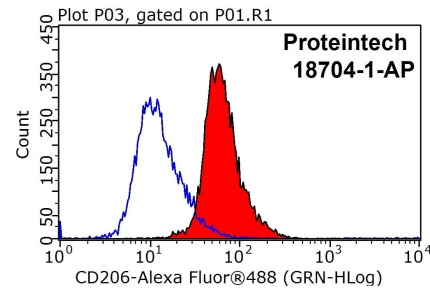
For technical support and original validation data for this product please contact:  
T: 1 (888) 4PTGLAB (1-888-478-4522) (toll free in USA), or 1(312) 455-8498 (outside USA)  
E: proteintech@ptglab.com  
W: ptglab.com

This product is exclusively available under Proteintech Group brand and is not available to purchase from any other manufacturer.

## Ausgewählte Validierungsdaten



Various lysates were subjected to SDS PAGE followed by western blot with 18704-1-AP (CD206 antibody) at dilution of 1:500 incubated at room temperature for 1.5 hours.



1X10<sup>6</sup> RAW 264.7 cells were stained with 0.2ug CD206 antibody (18704-1-AP, red) and control antibody (blue). Fixed with 90% MeOH blocked with 3% BSA (30 min). Alexa Fluor 488-conjugated AffiniPure Goat Anti-Rabbit IgG(H+L) with dilution 1:1000.